

WAAS
CH **93809**
W35A

APP CRS
352°

Rwy Idg
TDZE **5515**
Apt Elev **5515**

RNAV (GPS) RWY 35

COLORADO AIR AND SPACE PORT (CFO)

RNP APCH.
For uncompensated Baro-VNAV systems, LNAV/VNAV NA below -25°C or above 46°C. For inop ALS, increase LNAV/VNAV all Cats visibility to ¾ SM.

MALSR

MISSED APPROACH: Climb to 8000 direct CUDNI and on track 353° to PHLAT and hold.

ATIS
119.025

DENVER APP CON
128.25 371.95

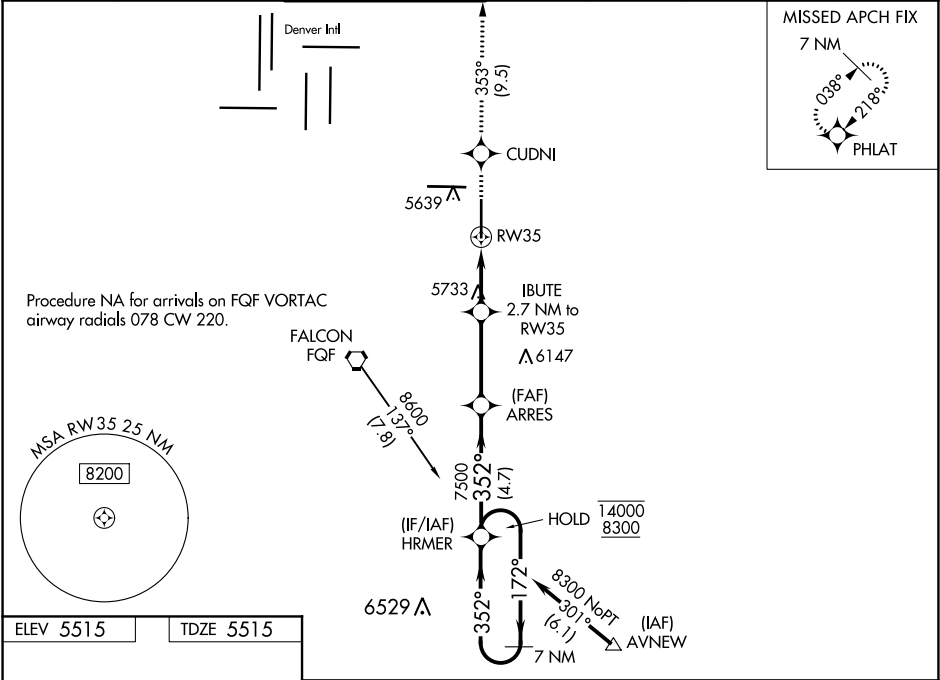
SPACE PORT TOWER ★
120.2 (CTAF) ①

GND CON
124.7

CLNC DEL
124.7

CLNC DEL
121.75
(When twr closed)

UNICOM
122.95



ELEV 5515

TDZE 5515

REIL Rwy 8 and 17
HIRL Rwy 8-26
MIRL Rwy 17-35

5538
5559 ±
TWR 5687
8000 X 100
35
352° to RW35

8000 CUDNI tr 353° PHLAT

*LNAV only

*1.5 NM to RW35

IBUTE 2.7 NM to RW35

ARRES 7500

HRMER 7 NM Holding Pattern

6420*

7500

172°

352°

14000 8300

GP 3.00°
TCH 54

CATEGORY	A	B	C	D
LPV DA	5715-½ 200 (200-½)			
LNAV/VNAV DA	5783-½ 268 (300-½)			
LNAV MDA	6040-½ 525 (600-½)		6040-1 525 (600-1)	
CIRCLING	6040-1 525 (600-1)		6100-1½ 585 (600-1½)	6300-2½ 785 (800-2½)