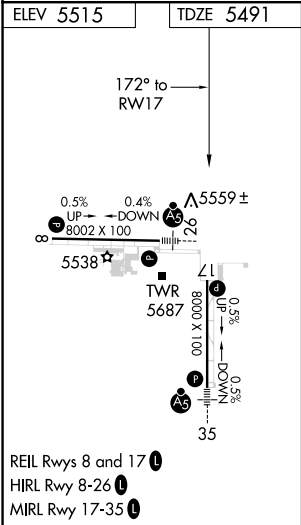
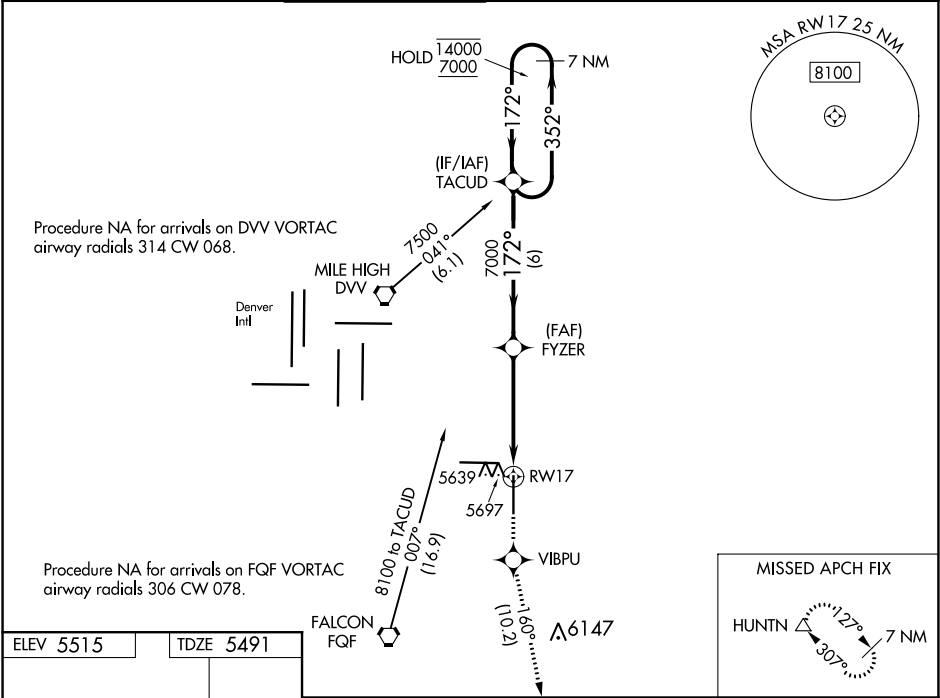


WAAS CH 82209 W17A	APP CRS 172°	Rwy Idg TDZE 5491 Apt Elev 5515
----------------------------------------	------------------------	-----------------------------------------------------

RNAV (GPS) RWY 17
COLORADO AIR AND SPACE PORT (CFO)

RNP APCH.			MISSED APPROACH: Climb to 8500 direct VIBPU and on track 160° to HUNTN and hold.			
For uncompensated Baro-VNAV systems, LNAV/VNAV NA below -25°C or above 48°C.						
ATIS 119.025	DENVER APP CON 128.25 371.95	SPACE PORT TOWER ★ 120.2 (CTAF) 0	GND CON 124.7	CLNC DEL 124.7	CLNC DEL 121.75 (When twr closed)	UNICOM 122.95



ELEV 5515		TDZE 5491
172° to RW17		
7 NM Holding Pattern		
TACUD		
FYZER		
7000		
14000 ← 352°		
7000 → 172°		
GP 3.00°		
TCH 55		
6 NM		
3.1 NM		
1.5 NM		
RW17		
* 1.5 NM to RW17		
* LNAV only		
CATEGORY	A	B
LPV DA	5691-3/4	200 (200-3/4)
LNAV/VNAV DA	5916-1 3/8	425 (500-1 3/8)
LNAV MDA	6000-1 509 (500-1)	6000-1 1/2 509 (500-1 1/2)
CIRCLING	6000-1 485 (500-1)	6100-1 1/2 585 (600-1 1/2)
		6300-2 1/2 785 (800-2 1/2)

SW-1, 31 DEC 2020 to 28 JAN 2021

SW-1, 31 DEC 2020 to 28 JAN 2021