

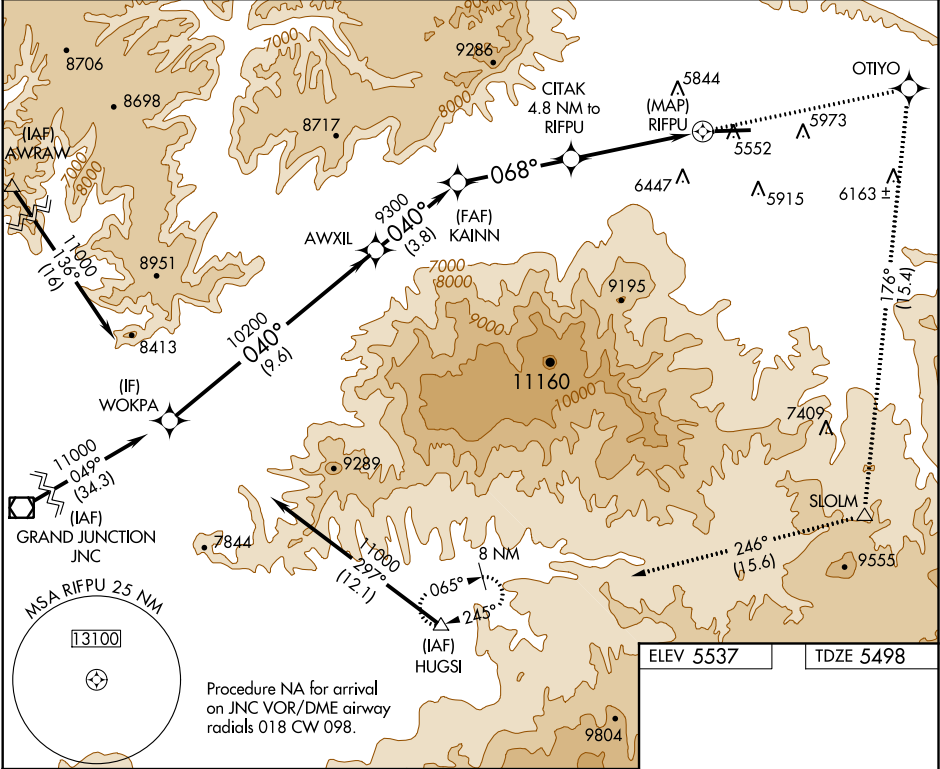
APP CRS	Rwy Idg	7000
068°	TDZE	5498
	Apt Elev	5537

# RNAV (GPS) Y RWY 8

RIFLE GARFIELD COUNTY (RIL)

<p><b>⚠</b> DME/DME RNP-0.3 NA. Visibility reduction by helicopters NA. <b>❄</b> -14°C Circling NA south of Rwy 8-26 at night.</p>	<p><b>MISSED APPROACH:</b> Climb to 13000 direct OTIYO and right turn on track 176° to SLOLM and on track 246° to HUGSI and hold, continue climb-in-hold to 13000.</p>
--	--

ASOS <b>135.275</b>	DENVER CENTER <b>134.95 327.075</b>	UNICOM <b>122.8 (CTAF) 0</b>
------------------------	--	---------------------------------



VGSJ and descent angles not coincident (VGSJ Angle 3.00/TCH 47).		13000	OTIYO	SLOLM	HUGSI
WOKPA				tr 176°	tr 246°
11000	AWXIL	KAINN	CITAK	RIFPU	
Procedure Turn NA	040°	10200	3.77° TCH 47	4.8 NM to RIFPU	
		9300	068°	7640	
	9.6 NM	3.8 NM	4.2 NM	4.8 NM	0.5 NM
CATEGORY	A	B	C	D	
LNAV MDA	7420-1¼ 1922 (1900-1¼)	7420-1½ 1922 (1900-1½)	7420-3 1922 (1900-3)	NA	
CIRCLING	7420-1¼ 1883 (1900-1¼)	7420-1½ 1883 (1900-1½)	7420-3 1883 (1900-3)	NA	
HIRL Rwy 8-26 0		REIL Rwy 8 and 26 0			