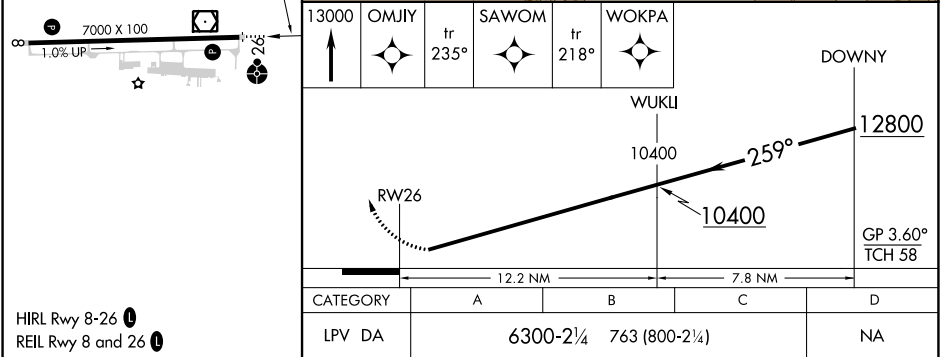
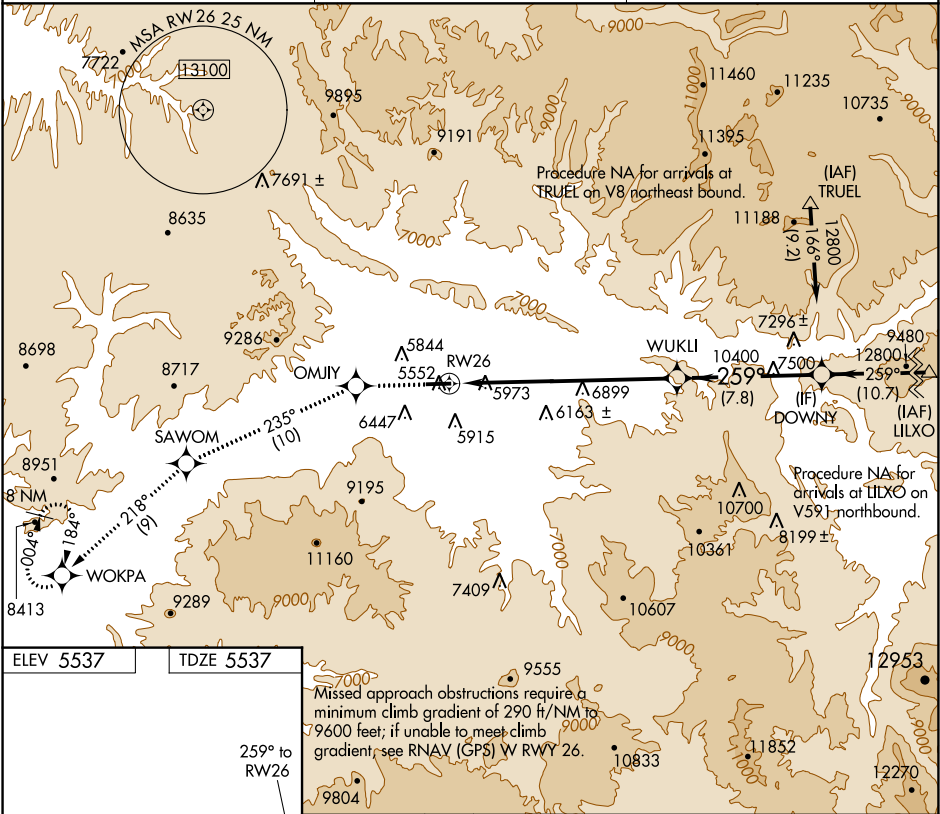


WAAS CH 93708 W26A	APP CRS 259°	Rwy Idg TDZE Apt Elev 7000 5537 5537
--	------------------------	--

RNAV (GPS) X RWY 26
RIFLE GARFIELD COUNTY (RIL)

NA -14°C	DME/DME RNP- 0.3 NA.	ODALS 	MISSED APPROACH: Climb to 13000 direct OMJIY and on track 235° to SAWOM and on track 218° to WOKPA and hold, continue climb-in-hold to 13000.
--------------------	----------------------	-----------	---

ASOS 135.275	DENVER CENTER 134.95 327.075	UNICOM 122.8 (CTAF)
------------------------	--	-------------------------------



SW-1, 31 DEC 2020 to 28 JAN 2021

SW-1, 31 DEC 2020 to 28 JAN 2021