

VOR/DME EKR
115.2
Chan **99**

APP CRS
107°

Rwy Idg
TDZE
Apt Elev
N/A
N/A
6421

VOR-A
MEEKER COULTER FIELD (E/O)

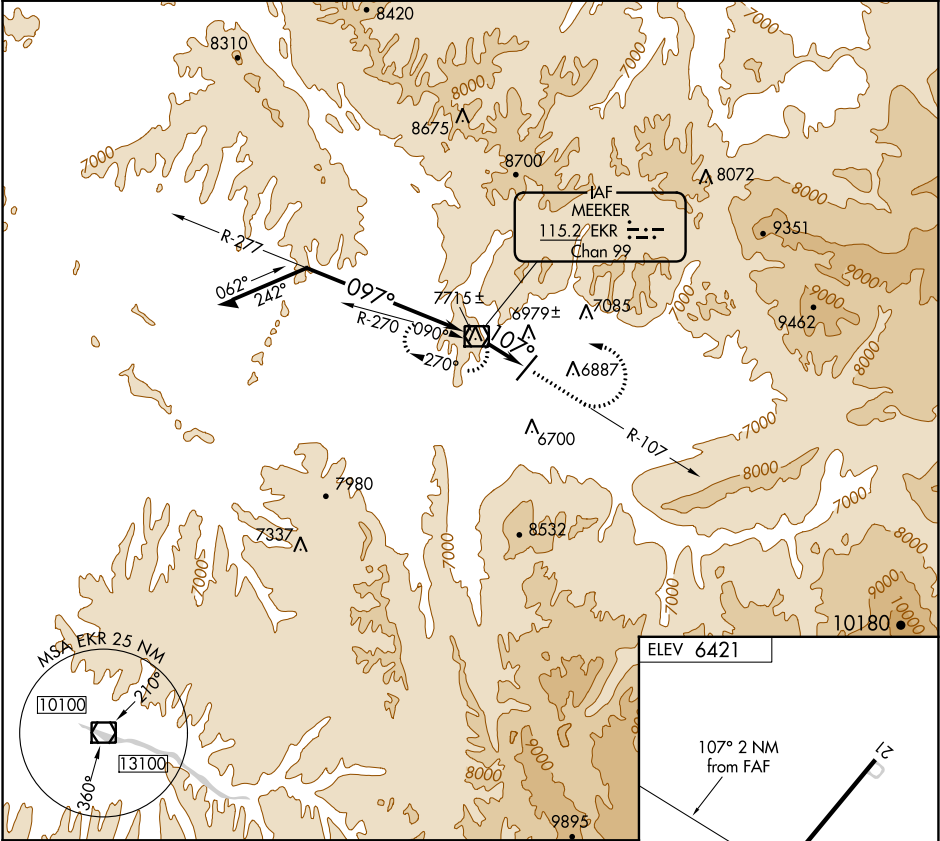
NA

-25°C

Circling not authorized west of Rwy 3-21.
Night landing: Rwy 21 NA.
Helicopter visibility reduction below 1 SM NA.

MISSED APPROACH: Climb via EKR VOR/DME R-107 to 8600, then climbing left turn to 10000 direct EKR VOR/DME and hold.

ASOS 135.525	DENVER CENTER 134.5 327.8	UNICOM 122.8 (CTAF) 0
------------------------	-------------------------------------	---------------------------------



Remain within 10 NM

9900

277°

097°

8800

107°

2 NM

8600

10000

EKR R-107

EKR

EKR 2

ELEV 6421

107° 2 NM from FAF

6503 X 100

0.9° UP

MIRL Rwy 3-21

REIL Rws 3 and 21

CATEGORY	A	B	C	D	FAF to MAP 2 NM					
CIRCLING	8000-1¼	8000-1½	8000-3	NA	Knots	60	90	120	150	180
	1579 (1600-1¼)	1579 (1600-1½)	1579 (1600-3)		Min:Sec	2:00	1:20	1:00	0:48	0:40