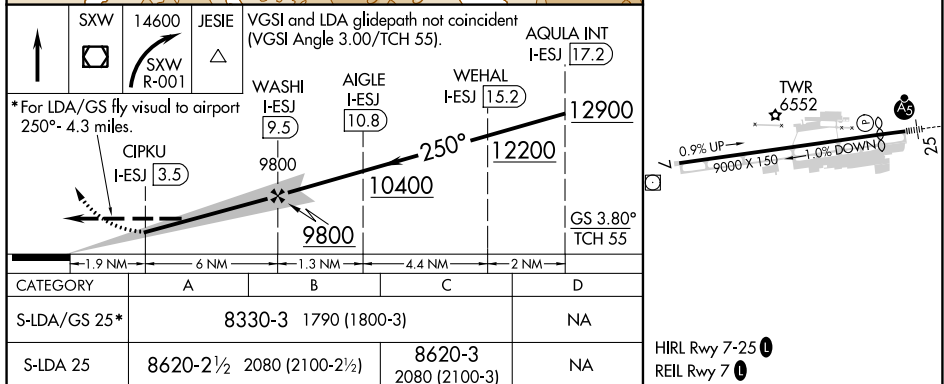
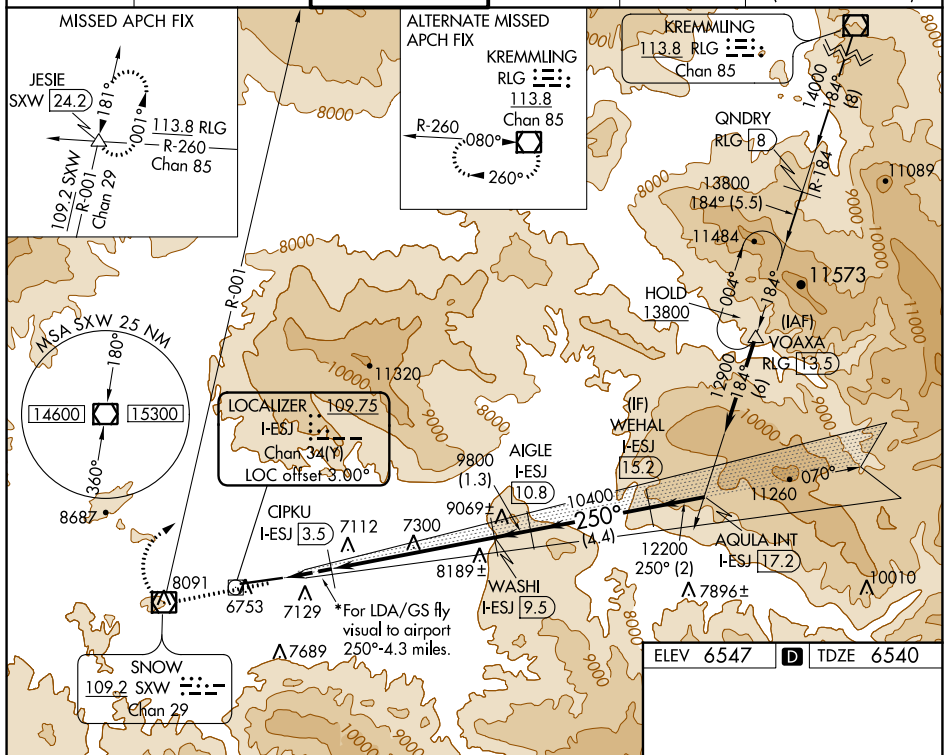


LDA RWY 25
EAGLE COUNTY RGNL (EGE)

MISSED APPROACH: Climb direct SXW VOR/DME, cross SXW VOR/DME, then climbing right turn to 14600 on SXW VOR/DME R-001 to JESIE SXW 24.2 DME and hold, continue climb-in-hold to 14600. *Missed approach requires minimum climb of 275 feet per NM to 11700.

ATIS 135.575	DENVER CENTER 128.65 282.2	EAGLE TOWER ★ 119.8 (CTAF) 0	GND CON 121.8	CLNC DEL 124.75	DENVER CLNC DEL 124.75 (When tower closed)
------------------------	--------------------------------------	--	-------------------------	---------------------------	---



SW-1, 31 DEC 2020 to 28 JAN 2021

SW-1, 31 DEC 2020 to 28 JAN 2021