
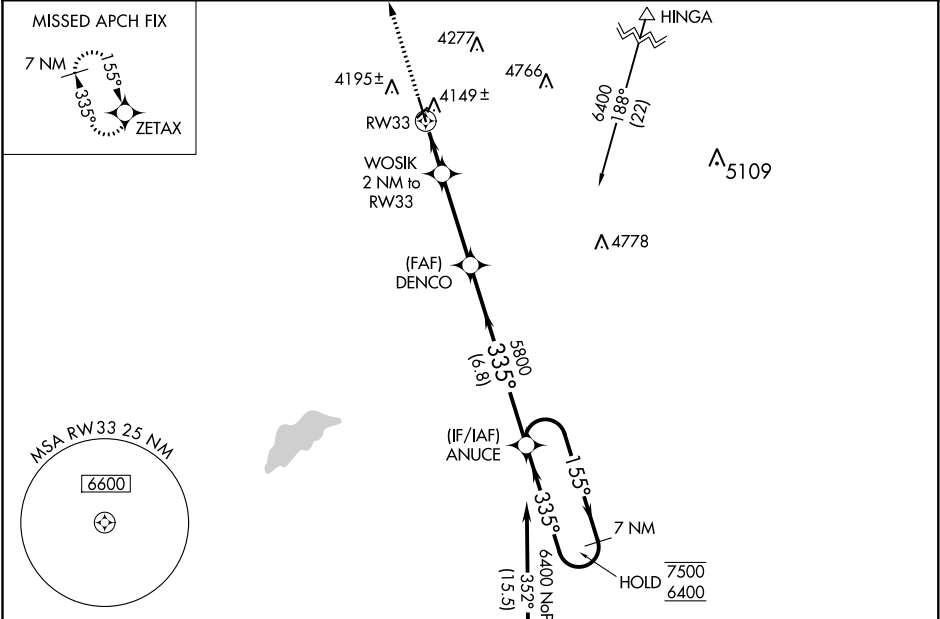


WAAS CH 65730 W33A	APP CRS 335°	Rwy Idg TDZE Apt Elev	5201 4028 4038
--	------------------------	-----------------------------	---

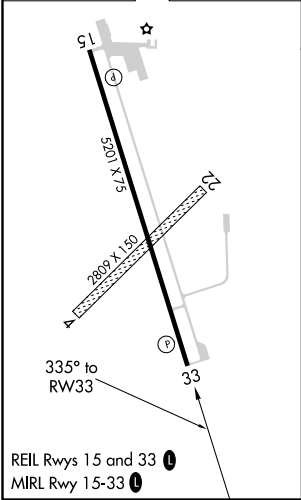
RNAV (GPS) RWY 33
STERLING MUNI (STK)



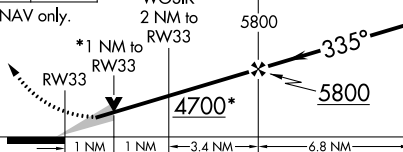

RNP APCH.	MISSED APPROACH: Climb to 7500 direct ZETAX and hold, continue climb-in-hold to 7500.
 Circling NA to Rwy 4 and 22. For uncompensated Baro-VNAV systems, LNAV/VNAV NA below -22°C or above 54°C.	

AWOS-3 118.525	DENVER CENTER 118,475 225.4	UNICOM 122.8 (CTAF) 0
--------------------------	---------------------------------------	---------------------------------



ELEV 4038	TDZE 4028
------------------	------------------



<div>(IAF) AKRON AKO</div> <div></div> <div>Procedure NA for arrival on AKO VOR/DME airway radials 276 CW 081.</div>				
<div>7500</div> <div></div>	<div>ANUCE</div> <div>7 NM Holding Pattern</div>			
<div>*LNAV only.</div>	<div>WOSIK 2 NM to RW33</div> <div>DENCO 5800</div> <div>155° → 7500 ← 335° 6400</div> <div>GP 3.00° TCH 44</div>			
<div></div>				
CATEGORY	A	B	C	D
LPV DA	4278- ³ / ₄ 250 (300- ³ / ₄)			
LNAV/ VNAV DA	4332-1 304 (300-1)			
LNAV MDA	4400-1 372 (400-1)			
 CIRCLING	4520-1 482 (500-1)	4580-1 542 (600-1)	4620-1½ 582 (600-1½)	4720-2¼ 682 (700-2¼)

SW-1, 31 DEC 2020 to 28 JAN 2021

SW-1, 31 DEC 2020 to 28 JAN 2021