



WAAS CH 93841 W25A	APP CRS 254°	Rwy Idg 5606 TDZE 6198 Apt Elev 6198
--	------------------------	---

RNAV (GPS) RWY 25
CRAIG-MOFFAT (CAG)

RNP APCH.



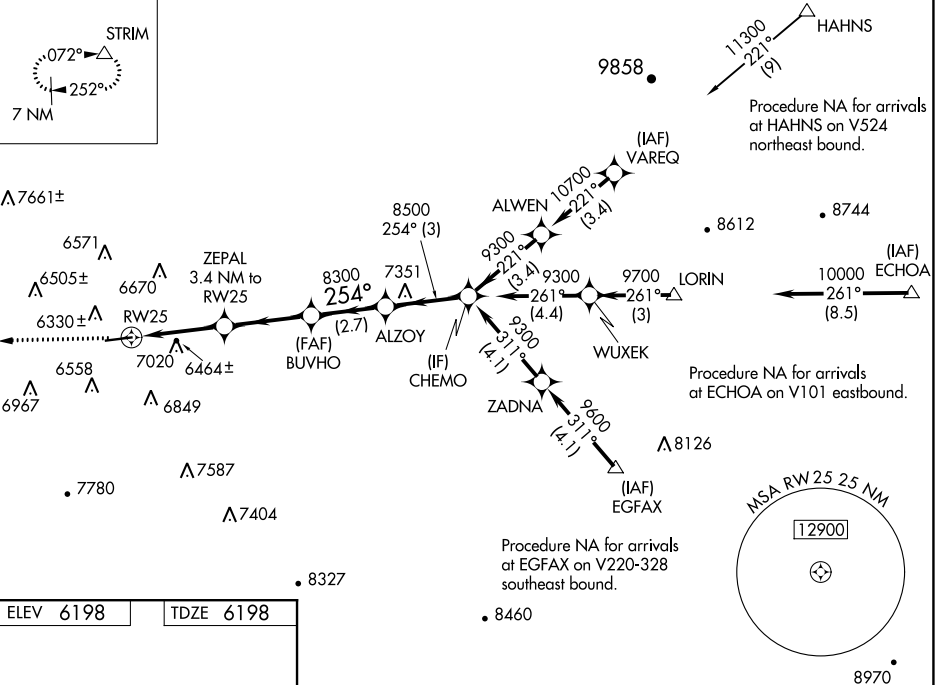


Circling NA for Cat D south of Rwy 7-25. Straight-in
 and Circling Rwy 25 NA at night. Rwy 25 helicopter
 visibility reduction below 1 SM NA.

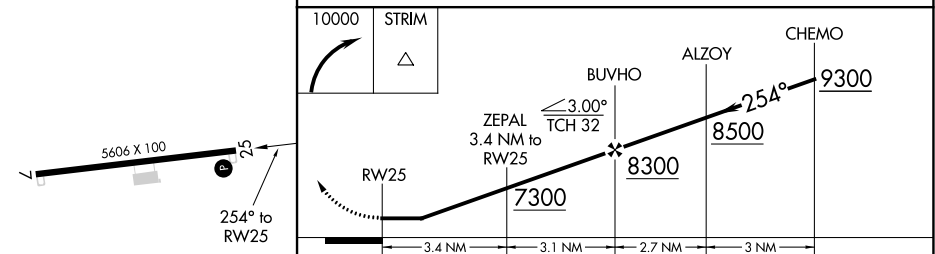
MISSED APPROACH: Climbing right turn to 10000 direct STRIM and hold, continue climb-in-hold to 10000.

ASOS 135.425	DENVER CENTER 120.475 235.975	UNICOM 122.8 (CTAF) 0
------------------------	---	---------------------------------

MISSED APCH FIX



ELEV 6198		TDZE 6198
-----------	--	-----------



CATEGORY	A	B	C	D
LP MDA	6720-1	522 (600-1)	6720-1½	522 (600-1½)
LNAV MDA	7280-1¼ 1082 (1100-1¼)	7280-1½ 1082 (1100-1½)	7280-3	1082 (1100-3)
C CIRCLING	7280-1¼ 1082 (1100-1¼)	7320-1½ 1122 (1300-1½)	7720-3	1522 (1600-3)

REIL Rwy 7 and 25 **L**

MIRL Rwy 7-25 (L)

CRAIG, COLORADO

Orig 24MAY18

40°30'N-107°31'W

CRAIG-MOFFAT (CAG)

RNAV (GPS) RWY 25

SW-1, 31 DEC 2020 to 28 JAN 2021