
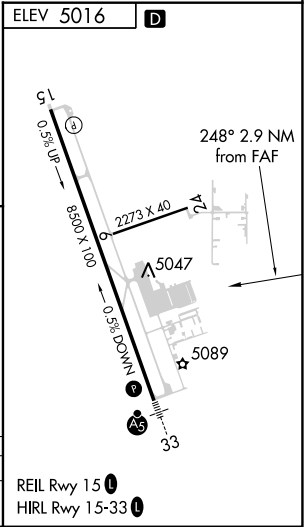
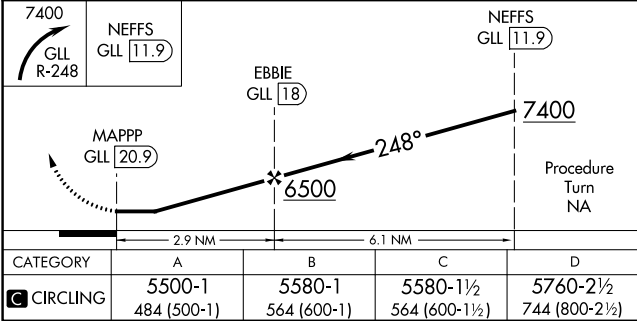
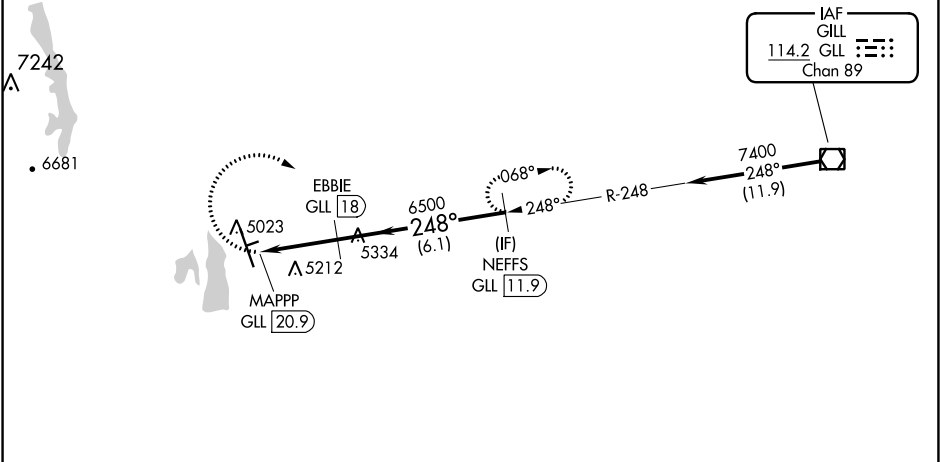


VOR/DME GLL 114.2 Chan 89	APP CRS 248°	Rwy Idg TDZE Apt Elev N/A N/A 5016
---	------------------------	--

VOR-A
NORTHERN COLORADO RGNL (FNL)

	Circling to Rwy 6/24 NA at night.				
	When local altimeter setting not received, use Denver Intl altimeter setting and increase all MDA 160 feet and Cat C/D visibility ½ SM. DME required.		MISSED APPROACH: Climbing right turn to 7400 via GLL VOR/DME R-248 to NEFFS/GLL 11.9 DME and hold.		
	ATIS 135.075	DENVER APP CON 134.85 251.125	NOCO TOWER ★ 118.4 (CTAF) 0	GND CON 121.65	CLNC DEL 120.25 (When twr closed)

Procedure NA for arrivals on GLL VOR/DME
airway radials 221 CW 301.



SW-1, 31 DEC 2020 to 28 JAN 2021

SW-1, 31 DEC 2020 to 28 JAN 2021