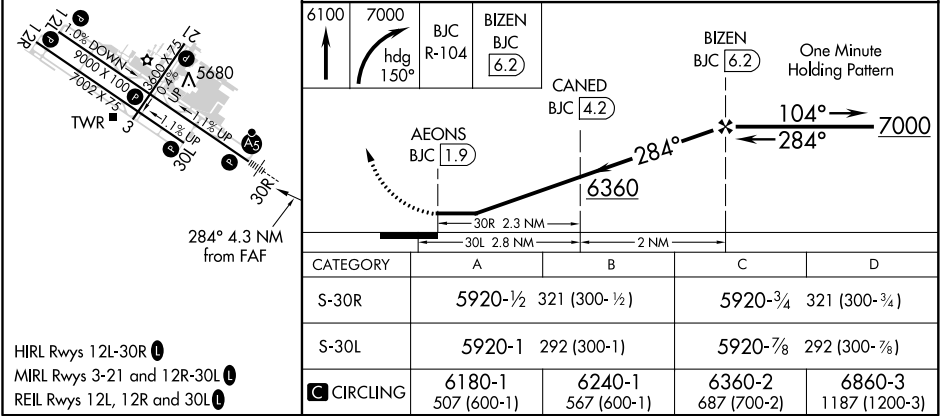
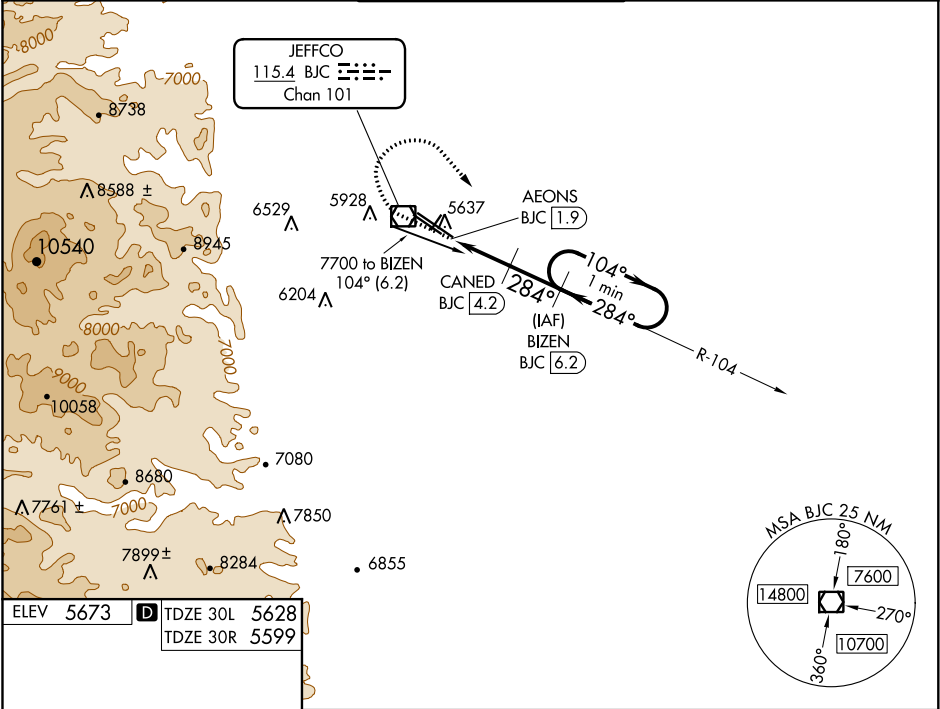


VOR/DME BJC	APP CRS	Rwy Idg	30L	30R
115.4	284°	TDZE	7002	9000
Chan 101		Apt Elev	5628	5599
			5673	5673

VOR/DME RWY 30L/R
ROCKY MOUNTAIN METROPOLITAN (BJC)

NA When local altimeter setting not received, use Denver Intl altimeter setting and increase all MDA 100 feet. Increase S-30L Cats C/D visibility to 1 mile and Circling Cat C to 2½ mile. For inoperative MALSR, increase S-30R all Cats visibility to 1 mile. For inoperative MALSR, when using Denver Intl altimeter setting, increase S-30R Cats C/D visibility to 1½ mile.	MALSR Rwy 30R 	MISSED APPROACH: Climb to 6100 then climbing right turn to 7000 on heading 150° and on BJC VOR/DME R-104 to BIZEN/BJC 6.2 DME and hold.
---	-----------------------------	--

ATIS 126.25	DENVER APP CON 126.1 360.75	METRO TOWER * 118.6(CTAF) 233.7	GND CON 121.7	CLNC DEL 132.6
------------------------------	--	--	--------------------------------	---------------------------------



SW-1, 31 DEC 2020 to 28 JAN 2021

SW-1, 31 DEC 2020 to 28 JAN 2021