

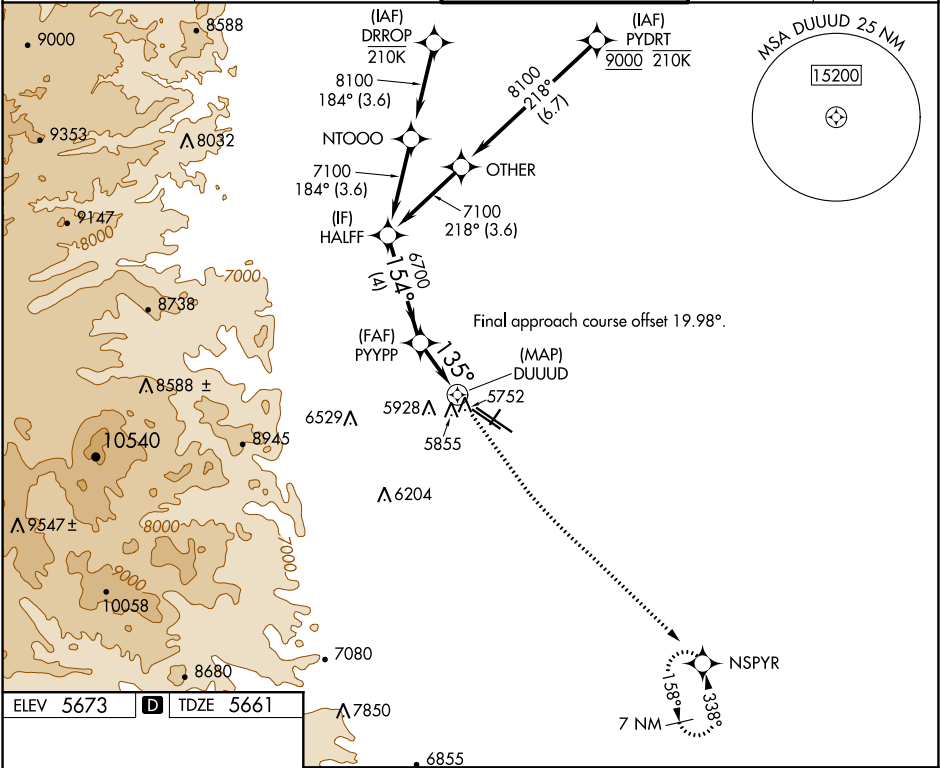
WAAS CH 77938 W12A	APP CRS 135°	Rwy ldg 9000 TDZE 5661 Apt Elev 5673
--	------------------------	---

RNAV (GPS) RWY 12L

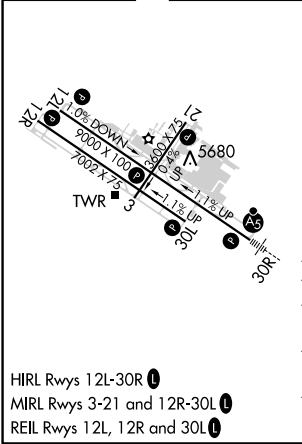
ROCKY MOUNTAIN METROPOLITAN (BJC)

RNP APCH.	MISSED APPROACH: Climb to 6200 then climbing left turn to 8400 direct NSPYR and hold.
Circling NA for Cat D southwest of Rwy 12R-30L	

ATIS 126.25	DENVER APP CON 126.1 360.75	METRO TOWER ★ 118.6 (CTAF) 233.7	GND CON 121.7	CLNC DEL 132.6
-----------------------	---------------------------------------	---	-------------------------	--------------------------



ELEV 5673 **D** TDZE 5661



HALFF				DUUUD			
7100				6200 8400 NSPYR			
154°				3.00° TCH 41			
6700				DUUUD			
4 NM				2.3 NM 0.8			
CATEGORY	A	B	C	D			
LP MDA	6020-1 359 (400-1)						
LNAV MDA	6120-1 459 (500-1)		6120-1 3/8 459 (500-1 3/8)				
CIRCLING	6180-1 507 (600-1)	6240-1 567 (600-1)	6360-2 687 (700-2)	6360-2 1/4 687 (700-2 1/4)			

SW-1, 31 DEC 2020 to 28 JAN 2021

SW-1, 31 DEC 2020 to 28 JAN 2021