

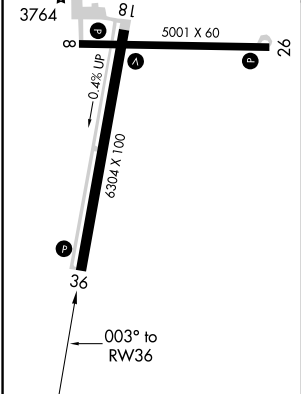
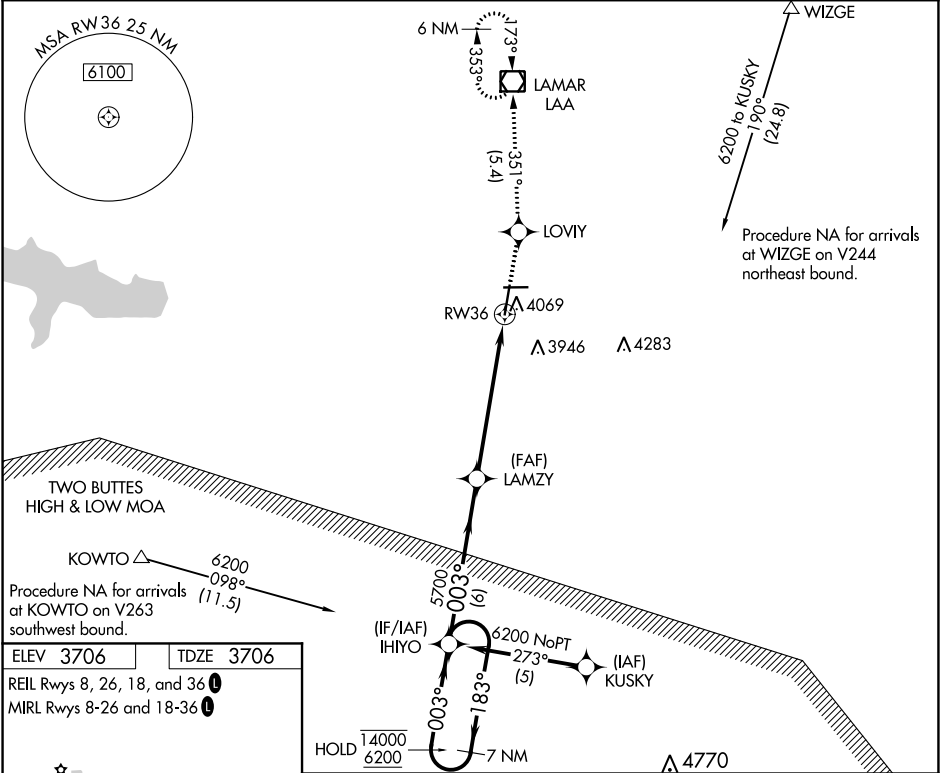
WAAS CH 99400 W36A	APP CRS 003°	Rwy Idg TDZE Apt Elev	6304 3706 3706
--	------------------------	-----------------------------	---

RNAV (GPS) RWY 36

SOUTHEAST COLORADO RGNL (LAA)

RNP APCH.	MISSED APPROACH: Climb to 6000 direct LOVIY and left turn on track 351° to LAA VOR/DME and hold.
⚠ Circling Rwy 8, 26 NA at night. Rwy 36 helicopter visibility reduction below ¾ SM NA. For uncompensated Baro-VNAV systems, LNAV/VNAV NA below -22°C or above 54°C.	

ASOS 135.625	DENVER CENTER 133.4 377.175	UNICOM 122.8 (CTAF)
------------------------	---------------------------------------	-------------------------------



VGSI and RNAV glidepath not coincident (VGSI Angle 3.00/TCH 45).			
7 NM Holding Pattern			
14000 ← 183° 6200 ← 003°			
GP 3.00° TCH 50			
5700			
6 NM 4 NM 2 NM			
CATEGORY	A	B	C
LPV DA	3956-1 250 (300-1)		
LNAV/VNAV DA	4250-2 544 (600-2)		
LNAV MDA	4380-1 674 (700-1)	4380-2 674 (700-2)	4380-2 674 (700-2 ¼)