

WAAS CH 86613 W18A	APP CRS 183°	Rwy Idg 6304 TDZE 3695 Apt Elev 3706
--	------------------------	---

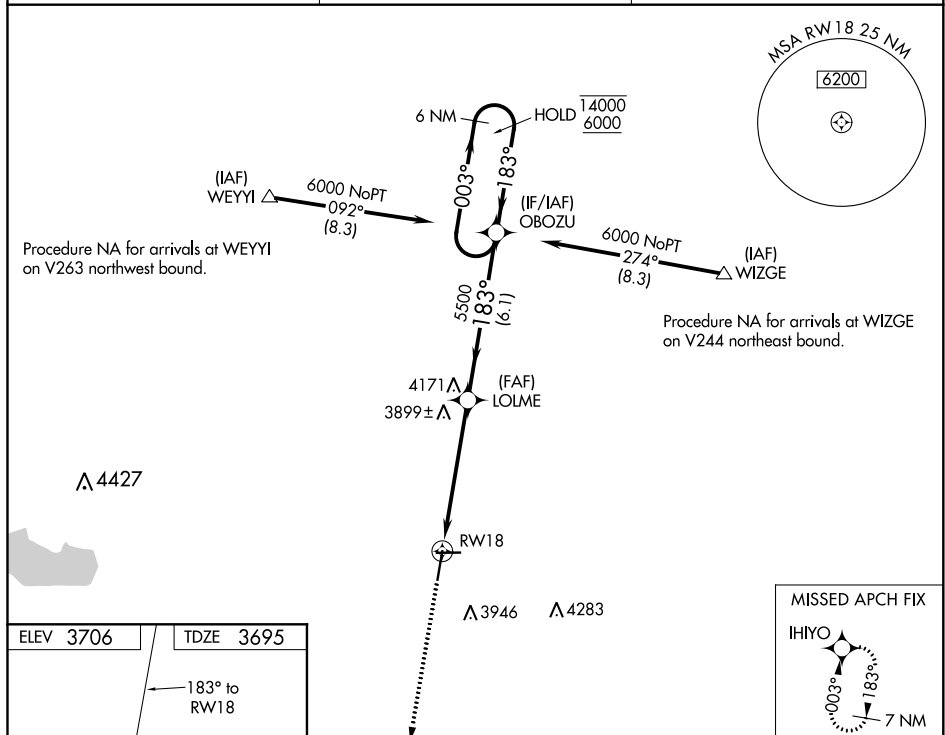
RNAV (GPS) RWY 18
SOUTHEAST COLORADO RGNL (LAA)

RNP APCH.

T Circling Rwy 8, 26 NA at night. For uncompensated
A Baro-VNAV systems, LNAV/VNAV NA below -22°C
or above 54°C.

MISSED APPROACH: Climb to 6200 direct IHIYO and hold.

ASOS 135.625	DENVER CENTER 133.4 377.175	UNICOM 122.8 (CTAF) 1
------------------------	---------------------------------------	--



6200	IHIYO	VGS1 and RNAV glidepath not coincident (VGS1 Angle 3.00/TCH 45).			
↑	✱	<div style="display: flex; justify-content: space-around; align-items: center;"> <div style="text-align: center;"> <p>LOLME</p> <p>5500</p> </div> <div style="text-align: center;"> <p>OBOZU</p> <p>6 NM Holding Pattern</p> </div> </div>			
*RNAV only.		<div style="display: flex; justify-content: space-between; align-items: center;"> <div style="text-align: center;"> <p>RW18</p> <p>1.4 NM</p> </div> <div style="text-align: center;"> <p>1.4 NM to RW18</p> </div> <div style="text-align: center;"> <p>5500</p> <p>183°</p> </div> <div style="text-align: center;"> <p>003° → 14000 ← 183° 6000</p> </div> </div>			
		<div style="display: flex; justify-content: space-around; align-items: center;"> <div style="text-align: center;"> <p>GP 3.00° TCH 41</p> </div> </div>			
CATEGORY		A	B	C	D
LPV DA		3945-1 250 (300-1)			
RNAV/ VNAV DA		4014-1¼ 319 (400-1¼)			
RNAV MDA		4160-1 465 (500-1)	4160-1⅜ 465 (500-1⅜)	4160-1½ 465 (500-1½)	