

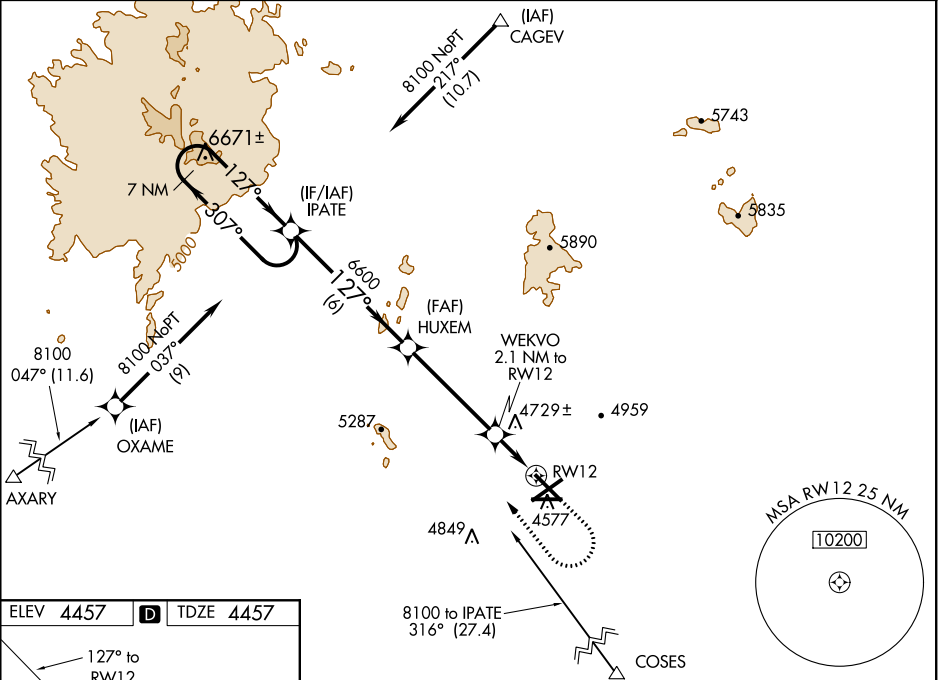
WAAS CH <b>93836</b> <b>W12A</b>	APP CRS <b>127°</b>	Rwy Idg TDZE Apt Elev	<b>7499</b> <b>4457</b> <b>4457</b>
--	------------------------	-----------------------------	---

RNAV (GPS) RWY 12  
LAS CRUCES INTL (LRU)

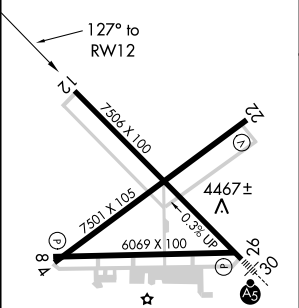
⚠ For uncompensated Baro-VNAV systems, LNAV/VNAV NA below -12 °C (11°F) or above 49°C (120°F). DME/DME RNP-0.3 NA. Helicopter visibility reduction below ¾ SM NA. Baro-VNAV and VDP NA when using Deming altimeter setting. When local altimeter setting not received, use Deming altimeter setting: increase LPV DA to 4821 feet and LNAV/VNAV DA to 4824 feet and all visibilities ½ mile; increase all MDA 120 feet and visibility Cat C and D ½ mile.

MISSED APPROACH: Climb to 5800 then climbing right turn to 8100 direct IPATE and hold.

AWOS-3 <b>119.025</b>	ALBUQUERQUE CENTER <b>128.2 285.5</b>	UNICOM <b>122.7 (CTAF) 0</b>
--------------------------	--	---------------------------------



ELEV 4457	D	TDZE 4457
-----------	---	-----------



REIL Rwy 12  
HIRL Rwy 12-30 0  
MIRL Rwy 4-22 and 8-26 0

7 NM Holding Pattern				IPATE	HUXEM	WEKVO 2.1 NM to RW12	5800 ↑	8100 ↷	IPATE ✦
8100 ← 307° 127° →				6600	6600	*5180	*LNAV only.		
GP 3.00° TCH 55				6600		*1.2 NM to RW12	RW12		
				6 NM	4.5 NM	0.9	1.2 NM		
CATEGORY	A		B	C		D			
LPV DA			4707-¾	250 (300-¾)					
LNAV/VNAV DA			4710-¾	253 (300-¾)					
LNAV MDA	4900-1		443 (500-1)		4900-1⅓		443 (500-1⅓)		
CIRCLING	4900-1 443 (500-1)		5040-1 583 (600-1)		5320-2½ 863 (900-2½)		5320-2¾ 863 (900-2¾)		

SW-1, 31 DEC 2020 to 28 JAN 2021

SW-1, 31 DEC 2020 to 28 JAN 2021