

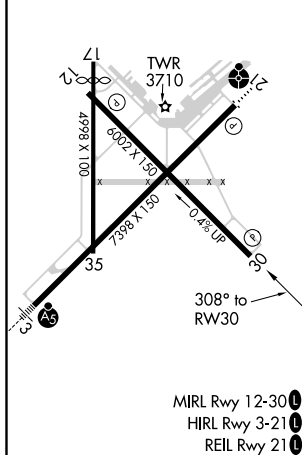
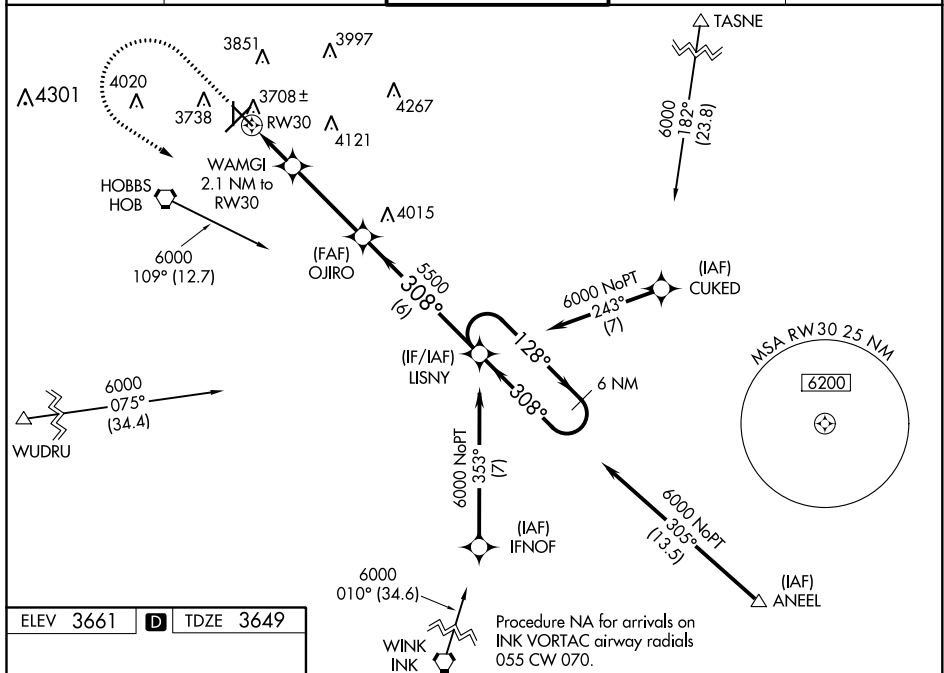
WAAS CH 69635 W30A	APP CRS 308°	Rwy Idg 6002 TDZE 3649 Apt Elev 3661
--	------------------------	---

RNAV (GPS) RWY 30
LEA COUNTY RGNL (HOB)

⚠ For uncompensated Baro-VNAV systems, LNAV/VNAV NA below -22°C (-7°F) or above 53°C (128°F).
⚠ DME/DME RNP-0.3 NA. When local altimeter setting not received, use Carlsbad altimeter setting and increase all DA 281 feet and all MDA 300 feet, increase LPV and LNAV/VNAV all Cats visibility 1½ mile, LNAV Cats C/D and Circling Cat C visibility ¾ mile, and Circling Cat D visibility ½ mile. Baro-VNAV and VDP NA when using Carlsbad altimeter setting. Rwy 17 helicopter visibility reduction below 1 SM NA. Circling Rwy 17 NA at night.

MISSED APPROACH:
Climb to 4700 then
climbing left turn to
6000 direct LISNY
and hold.

ATIS 119.75	FORT WORTH CENTER 133.1 298.95	HOBBS TOWER ★ 120.65 (CTAF) 0 317.4	GND CON 121.9	UNICOM 122.95
-----------------------	--	---	-------------------------	-------------------------



4700 ↑	6000 ↖	LISNY ✦				
*LNAV only.			GP 3.00° TCH 44			
CATEGORY	A		B		C	D
LPV DA	4120-1 459 (500-1)		4160-1 499 (500-1)		4440-2½ 779 (800-2¼)	4440-2½ 779 (800-2½)
LNAV/DA	4120-1 459 (500-1)		4160-1 499 (500-1)		4440-2½ 779 (800-2¼)	4440-2½ 779 (800-2½)
VNAV	4120-1 459 (500-1)		4160-1 499 (500-1)		4440-2½ 779 (800-2¼)	4440-2½ 779 (800-2½)
LNAV MDA	4120-1 459 (500-1)		4160-1 499 (500-1)		4440-2½ 779 (800-2¼)	4440-2½ 779 (800-2½)
CIRCLING	4120-1 459 (500-1)		4160-1 499 (500-1)		4440-2½ 779 (800-2¼)	4440-2½ 779 (800-2½)

RNAV (GPS) RWY 30