

WAAS CH <b>90215</b> <b>W03A</b>	APP CRS <b>038°</b>	Rwy Idg TDZE <b>3652</b> Apt Elev <b>3661</b>
--	------------------------	---

RNAV (GPS) RWY 3

LEA COUNTY RGNL (HOB)

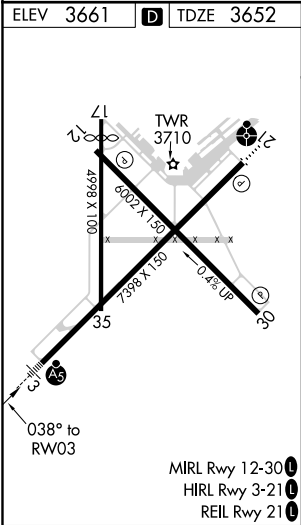
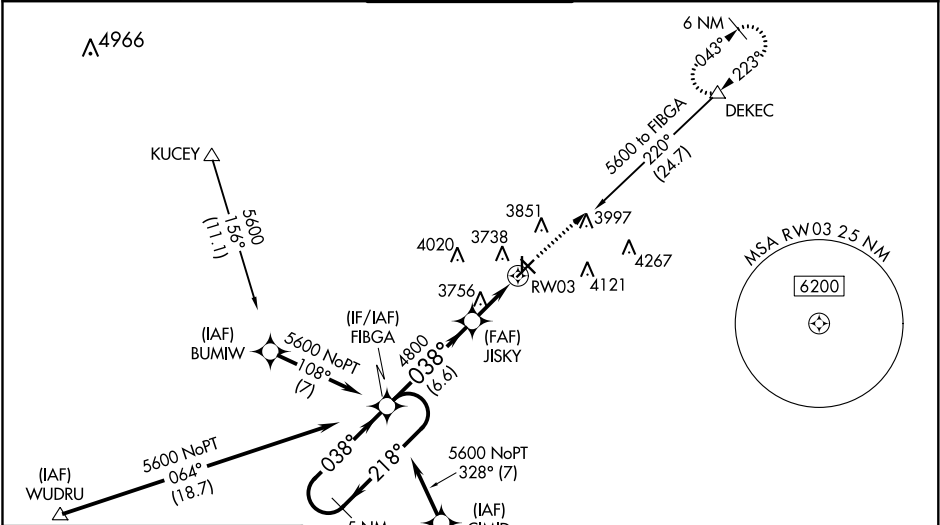
**⚠** For uncompensated Baro-VNAV systems, LNAV/VNAV NA below -22°C (-7°F) or above 52°C (126°F). DME/DME-RNP-0.3 NA. When local altimeter setting not received, use Carlsbad altimeter setting and increase all DA 281 feet and all MDA 300 feet, increase LPV and LNAV/VNAV all Cats visibility ½ mile, LNAV Cats C/D visibility ¾ mile, Circling Cat C visibility ¾ mile, and Circling Cat D visibility ½ mile. Baro-VNAV and VDP NA when using Carlsbad altimeter setting. Inoperative table does not apply to LPV and LNAV/VNAV. For inoperative MALSR increase LNAV Cats C/D visibility to 1 mile. For inoperative MALSR when using Carlsbad altimeter setting, increase LPV and LNAV/VNAV all Cats visibility to 1¾ miles, and LNAV Cats C/D to 1½ miles. Rwy 17 helicopter visibility reduction below 1 SM NA. Circling Rwy 17 NA at night.

MALSR

MISSED APPROACH:

Climb to 6000 direct DEKEC and hold.

ATIS <b>119.75</b>	FORT WORTH CENTER <b>133.1 298.95</b>	HOBBS TOWER * <b>120.65 (CTAF) 317.4</b>	GND CON <b>121.9</b>	UNICOM <b>122.95</b>
-----------------------	--	---	-------------------------	-------------------------



5 NM Holding Pattern				
FIBGA				
5600 ← 218° → 038°				
GP 3.00° TCH 48				
JISKY 4800				
*1 NM to RW03 *LNAV only.				
RW03				
6.6 NM 2.5 NM 1 NM				
CATEGORY	A	B	C	D
LPV DA	3902-¾ 250 (300-¾)			
LNAV/VNAV DA	3902-¾ 250 (300-¾)			
LNAV MDA	4020-½ 368 (400-½)		4020-⅝ 368 (400-⅝)	
CIRCLING	4120-1 459 (500-1)	4160-1 499 (500-1)	4440-2¼ 779 (800-2¼)	4440-2½ 779 (800-2½)