

WAAS CH 82735 W21A	APP CRS 218°	Rwy Idg TDZE 3649 Apt Elev 3661
--	------------------------	---

RNAV (GPS) RWY 21

LEA COUNTY RGNL (HOB)

For uncompensated Baro-VNAV systems, LNAV/VNAV NA below -22°C (-7°F) or above 53°C (128°F). DME/DME-RNP-0.3 NA. Inoperative table does not apply to LNAV/VNAV all Cats and LNAV Cats C/D. When local altimeter setting not received, use Carlsbad altimeter setting and increase all DA 281 feet and all MDA 300 feet, increase LPV and LNAV/VNAV all Cats visibility 7/8 mile, LNAV Cats C/D and Circling Cat C visibility 3/4 mile, and Circling Cat D visibility 1/2 mile. Baro-VNAV and VDP NA when using Carlsbad altimeter setting. For inoperative ODALS when using Carlsbad altimeter setting, increase LPV and LNAV/VNAV all Cats and LNAV Cats C/D vis to 1 7/8 miles. Rwy 17 helicopter visibility reduction below 1 SM NA. Circling Rwy 17 NA at night.

ODALS

MISSED APPROACH:
Climb to 5600 direct FIBGA and hold.

ATIS 119.75	FORT WORTH CENTER 133.1 298.95	HOBBS TOWER ★ 120.65 (CTAF) 317.4	GND CON 121.9	UNICOM 122.95
-----------------------	--	---	-------------------------	-------------------------

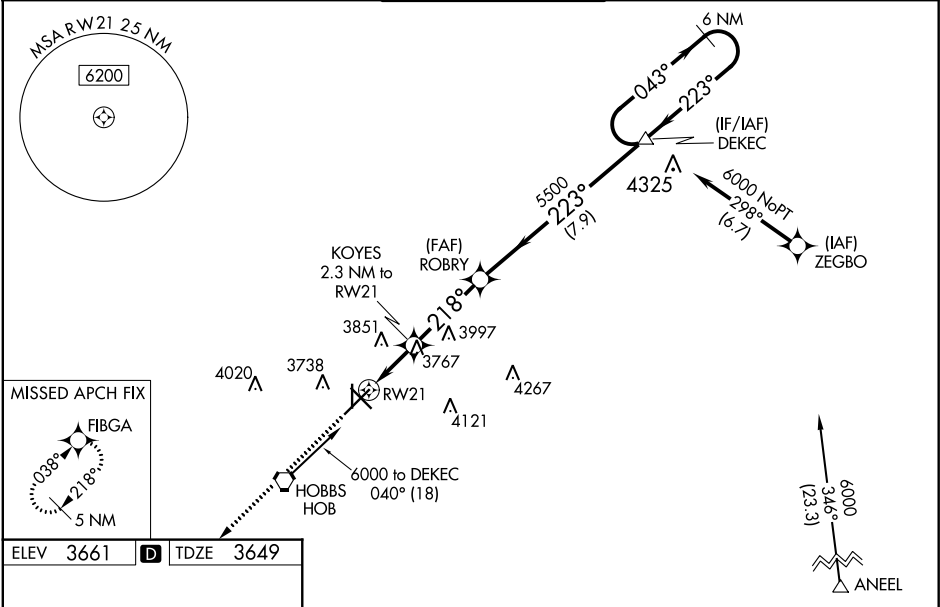


Diagram of RWY 21 showing taxiway intersections and runway dimensions. Key features include:

- Runway 21 (RW21) with a width of 4998 x 100.
- Intersecting taxiways: TW1, TW2, TW3, TW4, TW5, TW6, TW7, TW8, TW9, TW10, TW11, TW12, TW13, TW14, TW15, TW16, TW17, TW18, TW19, TW20, TW21, TW22, TW23, TW24, TW25, TW26, TW27, TW28, TW29, TW30, TW31, TW32, TW33, TW34, TW35, TW36, TW37, TW38, TW39, TW40, TW41, TW42, TW43, TW44, TW45, TW46, TW47, TW48, TW49, TW50, TW51, TW52, TW53, TW54, TW55, TW56, TW57, TW58, TW59, TW60, TW61, TW62, TW63, TW64, TW65, TW66, TW67, TW68, TW69, TW70, TW71, TW72, TW73, TW74, TW75, TW76, TW77, TW78, TW79, TW80, TW81, TW82, TW83, TW84, TW85, TW86, TW87, TW88, TW89, TW90, TW91, TW92, TW93, TW94, TW95, TW96, TW97, TW98, TW99, TW100.
- Runway 12-30 (RW12-30) with a width of 4998 x 100.
- Runway 3-21 (RW3-21) with a width of 4998 x 100.
- Runway 21-09 (RW21-09) with a width of 4998 x 100.
- Runway 12-30-09 (RW12-30-09) with a width of 4998 x 100.
- Runway 3-21-09 (RW3-21-09) with a width of 4998 x 100.
- Runway 21-09-09 (RW21-09-09) with a width of 4998 x 100.
- Runway 12-30-09-09 (RW12-30-09-09) with a width of 4998 x 100.
- Runway 3-21-09-09 (RW3-21-09-09) with a width of 4998 x 100.
- Runway 21-09-09-09 (RW21-09-09-09) with a width of 4998 x 100.
- Runway 12-30-09-09-09 (RW12-30-09-09-09) with a width of 4998 x 100.
- Runway 3-21-09-09-09 (RW3-21-09-09-09) with a width of 4998 x 100.
- Runway 21-09-09-09-09 (RW21-09-09-09-09) with a width of 4998 x 100.
- Runway 12-30-09-09-09-09 (RW12-30-09-09-09-09) with a width of 4998 x 100.
- Runway 3-21-09-09-09-09 (RW3-21-09-09-09-09) with a width of 4998 x 100.
- Runway 21-09-09-09-09-09 (RW21-09-09-09-09-09) with a width of 4998 x 100.
- Runway 12-30-09-09-09-09-09 (RW12-30-09-09-09-09-09) with a width of 4998 x 100.
- Runway 3-21-09-09-09-09-09 (RW3-21-09-09-09-09-09) with a width of 4998 x 100.
- Runway 21-09-09-09-09-09-09 (RW21-09-09-09-09-09-09) with a width of 4998 x 100.
- Runway 12-30-09-09-09-09-09-09 (RW12-30-09-09-09-09-09-09) with a width of 4998 x 100.
- Runway 3-21-09-09-09-09-09-09 (RW3-21-09-09-09-09-09-09) with a width of 4998 x 100.
- Runway 21-09-09-09-09-09-09-09 (RW21-09-09-09-09-09-09-09) with a width of 4998 x 100.
- Runway 12-30-09-09-09-09-09-09-09 (RW12-30-09-09-09-09-09-09-09) with a width of 4998 x 100.
- Runway 3-21-09-09-09-09-09-09-09 (RW3-21-09-09-09-09-09-09-09) with a width of 4998 x 100.
- Runway 21-09-09-09-09-09-09-09-09 (RW21-09-09-09-09-09-09-09-09) with a width of 4998 x 100.
- Runway 12-30-09-09-09-09-09-09-09-09 (RW12-30-09-09-09-09-09-09-09-09) with a width of 4998 x 100.
- Runway 3-21-09-09-09-09-09-09-09-09 (RW3-21-09-09-09-09-09-09-09-09) with a width of 4998 x 100.
- Runway 21-09-09-09-09-09-09-09-09-09 (RW21-09-09-09-09-09-09-09-09-09) with a width of 4998 x 100.
- Runway 12-30-09-09-09-09-09-09-09-09-09 (RW12-30-09-09-09-09-09-09-09-09-09) with a width of 4998 x 100.
- Runway 3-21-09-09-09-09-09-09-09-09-09 (RW3-21-09-09-09-09-09-09-09-09-09) with a width of 4998 x 100.
- Runway 21-09-09-09-09-09-09-09-09-09-09 (RW21-09-09-09-09-09-09-09-09-09-09) with a width of 4998 x 100.
- Runway 12-30-09-09-09-09-09-09-09-09-09-09 (RW12-30-09-09-09-09-09-09-09-09-09-09) with a width of 4998 x 100.
- Runway 3-21-09-09-09-09-09-09-09-09-09-09 (RW3-21-09-09-09-09-09-09-09-09-09-09) with a width of 4998 x 100.
- Runway 21-09-09-09-09-09-09-09-09-09-09-09 (RW21-09-09-09-09-09-09-09-09-09-09-09) with a width of 4998 x 100.
- Runway 12-30-09-09-09-09-09-09-09-09-09-09-09 (RW12-30-09-09-09-09-09-09-09-09-09-09-09) with a width of 4998 x 100.
- Runway 3-21-09-09-09-09-09-09-09-09-09-09-09 (RW3-21-09-09-09-09-09-09-09-09-09-09-09) with a width of 4998 x 100.
- Runway 21-09-09-09-09-09-09-09-09-09-09-09-09 (RW21-09-09-09-09-09-09-09-09-09-09-09-09) with a width of 4998 x 100.
- Runway 12-30-09-09-09-09-09-09-09-09-09-09-09-09 (RW12-30-09-09-09-09-09-09-09-09-09-09-09-09) with a width of 4998 x 100.
- Runway 3-21-09-09-09-09-09-09-09-09-09-09-09-09 (RW3-21-09-09-09-09-09-09-09-09-09-09-09-09) with a width of 4998 x 100.
- Runway 21-09-09-09-09-09-09-09-09-09-09-09-09-09 (RW21-09-09-09-09-09-09-09-09-09-09-09-09-09) with a width of 4998 x 100.
- Runway 12-30-09-09-09-09-09-09-09-09-09-09-09-09-09 (RW12-30-09-09-09-09-09-09-09-09-09-09-09-09-09) with a width of 4998 x 100.
- Runway 3-21-09-09-09-09-09-09-09-09-09-09-09-09-09 (RW3-21-09-09-09-09-09-09-09-09-09-09-09-09-09) with a width of 4998 x 100.
- Runway 21-09-09-09-09-09-09-09-09-09-09-09-09-09-09 (RW21-09-09-09-09-09-09-09-09-09-09-09-09-09-09) with a width of 4998 x 100.
- Runway 12-30-09-09-09-09-09-09-09-09-09-09-09-09-09-09 (RW12-30-09-09-09-09-09-09-09-09-09-09-09-09-09-09) with a width of 4998 x 100.
- Runway 3-21-09-09-09-09-09-09-09-09-09-09-09-09-09-09 (RW3-21-09-09-09-09-09-09-09-09-09-09-09-09-09-09) with a width of 4998 x 100.
- Runway 21-09-09-09-09-09-09-09-09-09-09-09-09-09-09-09 (RW21-09-09-09-09-09-09-09-09-09-09-09-09-09-09-09) with a width of 4998 x 100.
- Runway 12-30-09-09-09-09-09-09-09-09-09-09-09-09-09-09-09 (RW12-30-09-09-09-09-09-09-09-09-09-09-09-09-09-09-09) with a width of 4998 x 100.
- Runway 3-21-09-09-09-09-09-09-09-09-09-09-09-09-09-09-09 (RW3-21-09-09-09-09-09-09-09-09-09-09-09-09-09-09-09) with a width of 4998 x 100.
- Runway 21-09-09-09-09-09-09-09-09-09-09-09-09-09-09-09-09 (RW21-09-09-09-09-09-09-09-09-09-09-09-09-09-09-09-09) with a width of 4998 x 100.
- Runway 12-30-09-09-09-09-09-09-09-09-09-09-09-09-09-09-09-09 (RW12-30-09-09-09-09-09-09-09-09-09-09-09-09-09-09-09-09) with a width of 4998 x 100.
- Runway 3-21-09-09-09-09-09-09-09-09-09-09-09-09-09-09-09-09 (RW3-21-09-09-09-09-09-09-09-09-09-09-09-09-09-09-09-09) with a width of 4998 x 100.
- Runway 21-09-09-09-09-09-09-09-09-09-09-09-09-09-09-09-09-09 (RW21-09-09-09-09-09-09-09-09-09-09-09-09-09-09-09-09-09) with a width of 4998 x 100.
- Runway 12-30-09-09-09-09-09-09-09-09-09-09-09-09-09-09-09-09-09 (RW12-30-09-09-09-09-09-09-09-09-09-09-09-09-09-09-09-09-09) with a width of 4998 x 100.
- Runway 3-21-09-09-09-09-09-09-09-09-09-09-09-09-09-09-09-09-09 (RW3-21-09-09-09-09-09-09-09-09-09-09-09-09-09-09-09-09-09) with a width of 4998 x 100.
- Runway 21-09-09-09-09-09-09-09-09-09-09-09-09-09-09-09-09-09-09 (RW21-09-09-09-09-09-09-09-09-09-09-09-09-09-09-09-09-09-09) with a width of 4998 x 100.
- Runway 12-30-09-09-09-09-09-09-09-09-09-09-09-09-09-09-09-09-09-09 (RW12-30-09-09-09-09-09-09-09-09-09-09-09-09-09-09-09-09-09-09) with a width of 4998 x 100.
- Runway 3-21-09-09-09-09-09-09-09-09-09-09-09-09-09-09-09-09-09-09 (RW3-21-09-09-09-09-09-09-09-09-09-09-09-09-09-09-09-09-09-09) with a width of 4998 x 100.
- Runway 21-09-09-09-09-09-09-09-09-09-09-09-09-09-09-09-09-09-09-09 (RW21-09-09-09-09-09-09-09-09-09-09-09-09-09-09-09-09-09-09-09) with a width of 4998 x 100.
- Runway 12-30-09-09-09-09-09-09-09-09-09-09-09-09-09-09-09-09-09-09-09 (RW12-30-09-09-09-09-09-09-09-09-09-09-09-09-09-09-09-09-09-09-09) with a width of 4998 x 100.
- Runway 3-21-09-09-09-09-09-09-09-09-09-09-09-09-09-09-09-09-09-09-09 (RW3-21-09-09-09-09-09-09-09-09-09-09-09-09-09-09-09-09-09-09-09) with a width of 4998 x 100.
- Runway 21-09 (RW21-09) with a width of 4998 x 100.
- Runway 12-30-09 (RW12-30-09) with a width of 4998 x 100.
- Runway 3-21-09 (RW3-21-09) with a width of 4998 x 100.
- Runway 21-09 (RW21-09) with a width of 4998 x 100.
- Runway 12-30-09 (RW12-30-09) with a width of 4998 x 100.
- Runway 3-21-09 (RW3-21-09) with a width of 4998 x 100.
- Runway 21-09 (RW21-09) with a width of 4998 x 100.
- Runway 12-30-09 (RW12-30-09) with a width of 4998 x 100.
- Runway 3-21-09 (RW3-21-09) with a width of 4998 x 100.
- Runway 21-09 (RW21-09) with a width of 4998 x 100.
- Runway 12-30-09 (RW12-30-09) with a width of 4998 x 100.
- Runway 3-21-09 (RW3-21-09) with a width of 4998 x 100.
- Runway 21-09 (RW21-09) with a width of 4998 x 100.
- Runway 12-30-09 (RW12-30-09) with a width of 4998 x 100.
- Runway 3-21-09 (RW3-21-09) with a width of 4998 x 100.
- Runway 21-09 (RW21-09) with a width of 4998 x 100.
- Runway 12-30-09 (RW12-30-09) with a width of 4998 x 100.
- Runway 3-21-09 (RW3-21-09) with a width of 4998 x 100.
- Runway 21-09 (RW21-09) with a width of 4998 x 100.
- Runway 12-30-09 (RW12-30-09) with a width of 4998 x 100.
- Runway 3-21-09 (RW3-21-09) with a width of 4998 x 100.
- Runway 21-09 (RW21-09) with a width of 4998 x 100.
- Runway 12-30-09 (RW12-30-09) with a width of 4998 x 100.
- Runway 3-21-09 (RW3-21-09) with a width of 4998 x 100.
- Runway 21-09 (RW21-09) with a width of 4998 x 100.
- Runway 12-30-09 (RW12-30-09) with a width of 4998 x 100.
- Runway 3-21-09 (RW3-21-09) with a width of 4998 x 100.
- Runway 21-09 (RW21-09) with a width of 4998 x 100.
- Runway 12-30-09 (RW12-30-09) with a width of 4998 x 100.
- Runway 3-21-09 (RW3-21-09) with a width of 4998 x 100.
- Runway 21-09 (RW21-09) with a width of 4998 x 100.
- Runway 12-30-09 (RW12-30-09) with a width of 4998 x 100.
- Runway 3-21-09 (RW3-21-09) with a width of 4998 x 100.
- Runway 21-09 (RW21-09) with a width of 4998 x 100.
- Runway 12-30-09 (RW12-30-09

SW-1, 31 DEC 2020 to 28 JAN 2021

SW-1, 31 DEC 2020 to 28 JAN 2021