

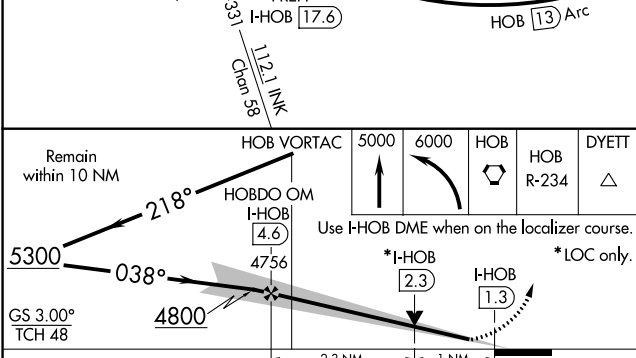
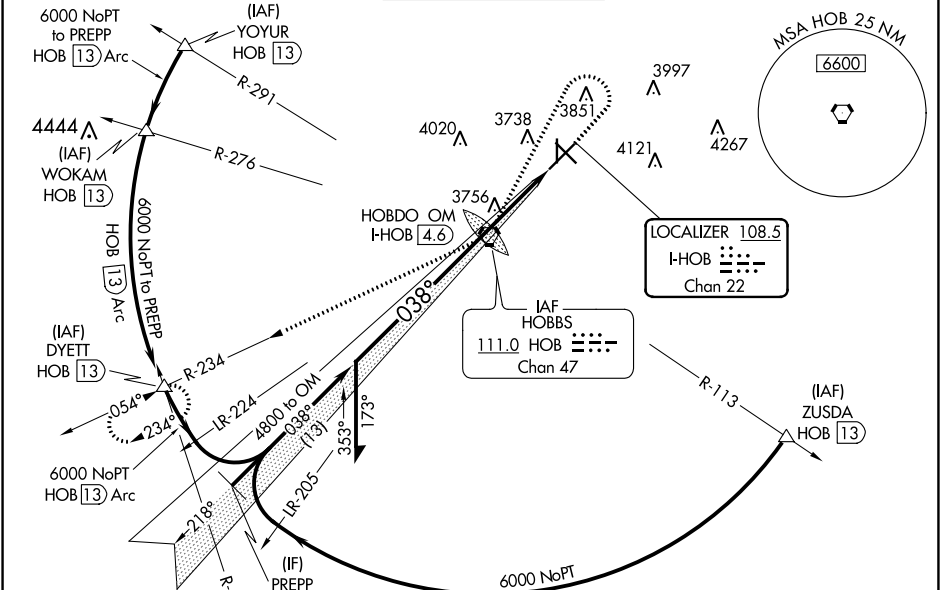
LOC/DME I-HOB	APP CRS	Rwy Idg	7020
108.5	038°	TDZE	3652
Chan 22		Apt Elev	3661

ILS or LOC RWY 3
LEA COUNTY RGNL (HOB)

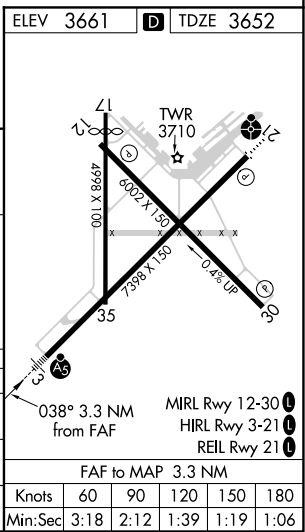
⚠ When local altimeter setting not received, use Carlsbad altimeter setting and increase all DA 281 feet and all MDA 300 feet; increase S-ILS all Cats visibility ¾ mile, increase S-LOC Cats C/D visibility ¾ mile, increase Circling Cat C visibility ¾ mile, increase Circling Cat D visibility ½ mile. For inoperative MALSR, increase Carlsbad altimeter setting S-ILS all Cats visibility to 1¾. VDP NA when using Carlsbad altimeter setting. Rwy 17 helicopter visibility reduction below 1 SM NA. Circling Rwy 17 NA at night.

MALSR
MISSED APPROACH: Climb to 5000 then dimbing left turn to 6000 direct HOB VORTAC then via HOB VORTAC R-234 to DYETT INT/HOB 13 DME and hold.

ATIS 119.75	FORT WORTH CENTER 133.1 298.95	HOBBBS TOWER ★ 120.65 (CTAF) 0 317.4	GND CON 121.9	UNICOM 122.95
-----------------------	--	--	-------------------------	-------------------------



CATEGORY	A	B	C	D
S-ILS 3		3852-½	200 (200-½)	
S-LOC 3		4020-½	368 (400-½)	4020-¾ 368 (400-¾)
CIRCLING	4120-1 459 (500-1)	4160-1 499 (500-1)	4440-2¼ 779 (800-2¼)	4440-2½ 779 (800-2½)



SW-1, 31 DEC 2020 to 28 JAN 2021

SW-1, 31 DEC 2020 to 28 JAN 2021