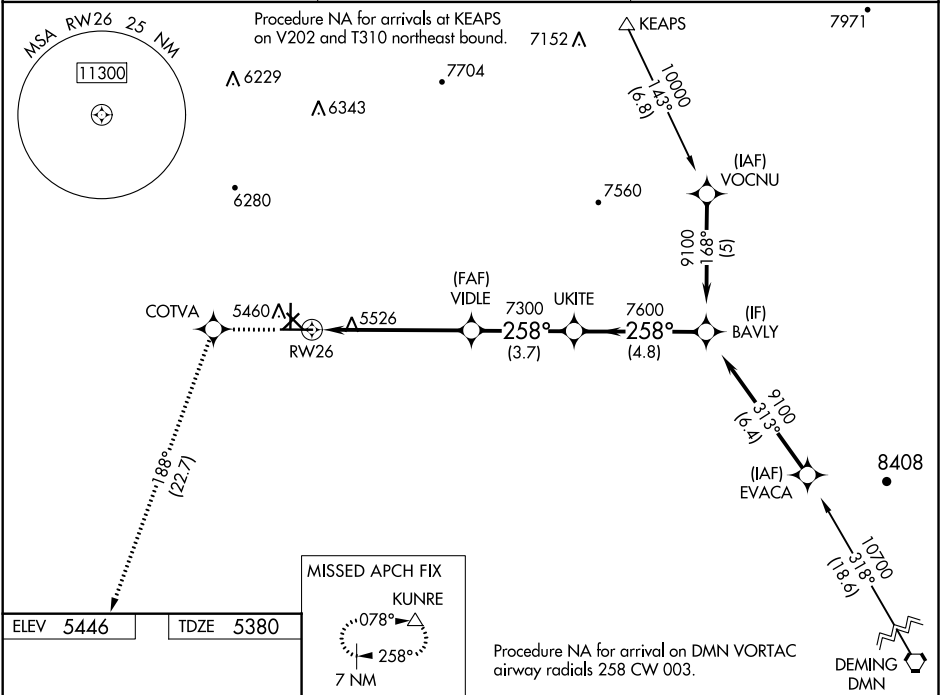


WAAS CH <b>87100</b> <b>W26A</b>	APP CRS <b>258°</b>	Rwy Idg TDZE <b>5380</b> Apt Elev <b>5446</b>
--	------------------------	---

RNAV (GPS) RWY 26  
GRANT COUNTY (SVC)

RNP APCH. Circling to Rwy 3, 12, 17, 21, 30, 35 NA at night. Inop table does not apply to LPV. For uncompensated Baro-VNAV systems, LNAV/VNAV NA below -25°C or above 38°C. For inop ALS, increase LNAV Cat C/D visibility to 1 3/8 SM. When local altimeter setting not received, procedure NA.	MALS 10000 143° (6.8)	MISSED APPROACH: Climb to 10000 direct COTVA and on track 188° to KUNRE and hold.
---	--------------------------------	---

AWOS-3 <b>126.725</b>	ALBUQUERQUE CENTER <b>134.45 327.15</b>	UNICOM <b>122.8 (CTAF) 0</b>
--------------------------	--	---------------------------------



ELEV <b>5446</b>	TDZE <b>5380</b>	MISSED APCH FIX KUNRE 078° 258° 7 NM			
10000		COTVA	tr 188°	KUNRE	VGSI and RNAV glidepath not coincident (VGSI Angle 3.00/TCH 45).
*LNAV only		*1.3 NM to RW26		VIDLE	UKITE
RW26		1.3 NM		7300	7600
1.3 NM		4.5 NM		3.7 NM	4.8 NM
CATEGORY		A		B	C
LPV DA		5630-3/4		250 (200-3/4)	
LNAV/VNAV DA		5789-1 1/2		409 (400-1 1/2)	
LNAV MDA		5840-3/4		5840-1	
CIRCLING		5880-1		5900-1	
MIRL Rwy 8-26 0		434 (500-1)		454 (500-1)	
REIL Rwy 8		5940-1 1/2		5940-1 1/2	
MIRL Rwy 8-26 0		494 (500-1 1/2)		554 (600-2)	

SW-1, 31 DEC 2020 to 28 JAN 2021

SW-1, 31 DEC 2020 to 28 JAN 2021