

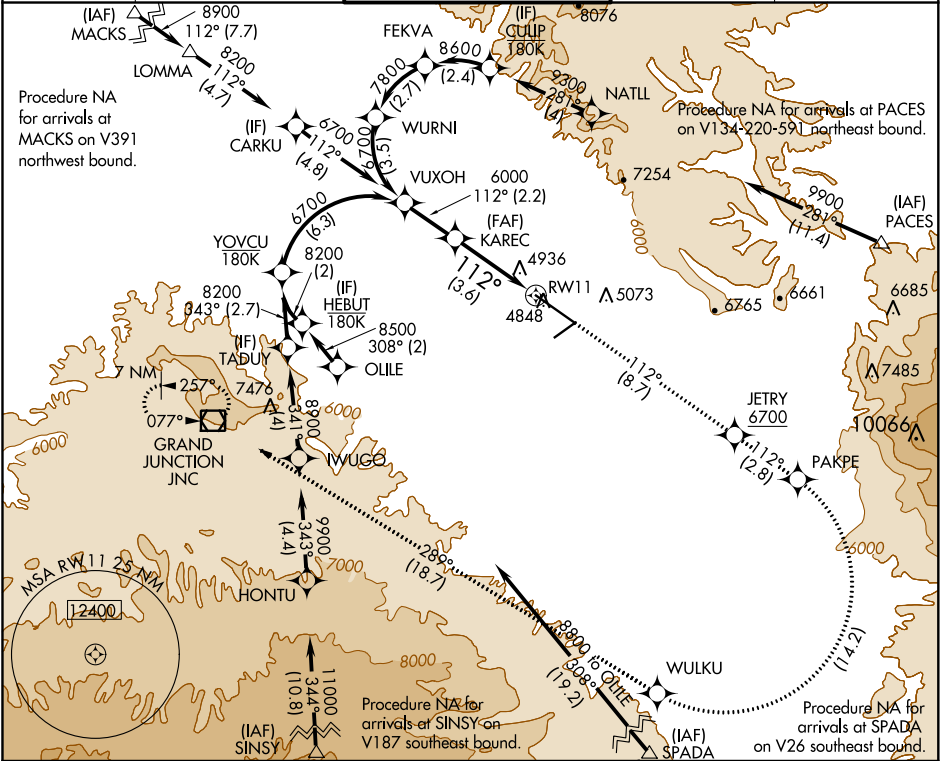
APP CRS	Rwy Idg	10503
112°	TDZE	4833
	Apf Elev	4858

RNAV (RNP) Z RWY 11

GRAND JUNCTION RGNL (GJT)

<p>RF and GPS required. For uncompensated Baro-VNAV systems, procedure NA below -21°C (-6°F) or above 38°C (101°F). For inoperative MALSR, increase RNP 0.10 all Cats visibility to 1¾ miles, and RNP 0.30 all Cats visibility to 1¾ miles.</p>	<p>MALSR</p> <p></p>	<p>MISSED APPROACH: Climb to 9000 on track 112° to JETRY, cross JETRY at or above 6700, and on track 112° to PAKPE, right turn to WULKU, and on track 289° to JNC VOR/DME and hold.</p>
--	-----------------------------	--

ATIS 118.55	DENVER APP CON ★ 119.7 317.4	GRAND JUNCTION TOWER ★ 118.1 (CTAF) 257.8	GND CON 121.7 257.8	UNICOM 122.95
-----------------------	--	---	-------------------------------	-------------------------



	VUXOH	9000	tr 112°	JETRY	6700	tr 112°	PAKPE	tr 112°	WULKU	tr 289°	JNC	ELEV 4858	TDZE 4833
	6700		112°		6000								
CATEGORY	A	B	C	D									
RNP 0.10 DA		5254/50	421 (400-1)										
RNP 0.30 DA		5366-1 ¾	533 (500-1¾)										
AUTHORIZATION REQUIRED													
HIRL Rwy 11-29 MIRL Rwy 4-22 REIL Rws 4, 22 and 29													

SW-1, 31 DEC 2020 to 28 JAN 2021

SW-1, 31 DEC 2020 to 28 JAN 2021