

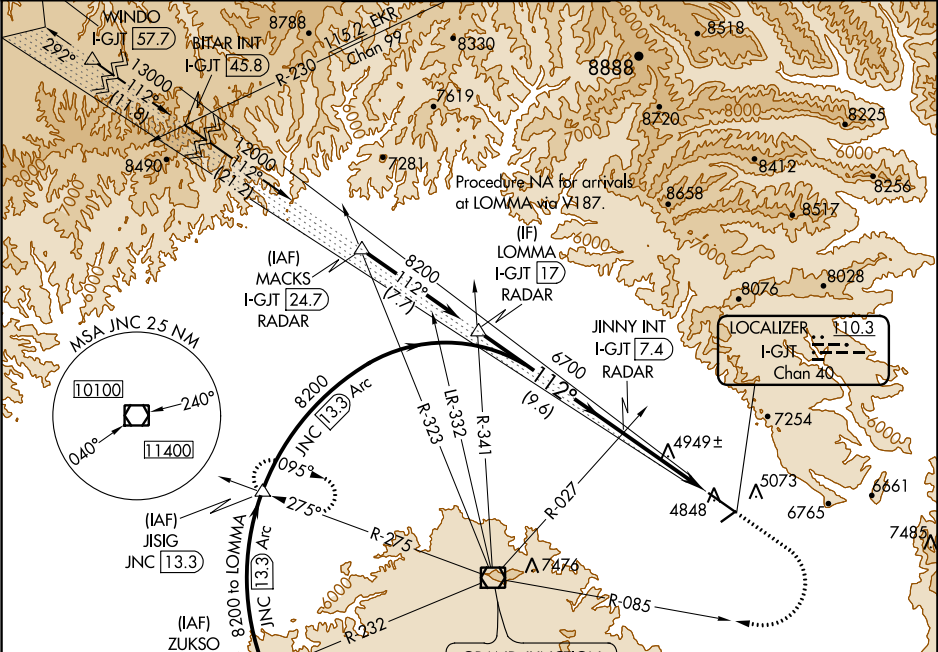
| | | | |
|---------------|---------|----------|-------|
| LOC/DME I-GJT | APP CRS | Rwy Idg | 10503 |
| 110.3 | 112° | TDZE | 4833 |
| Chan 40 | | Apt Elev | 4858 |

ILS or LOC RWY 11

GRAND JUNCTION RGNL (GJT)

| | | |
|--|-------|---|
| DME required. | MALSR | MISSED APPROACH: Climb to 6700 then climbing right turn to 9000 via JNC VOR/DME R-085 to JNC VOR/DME then via JNC VOR/DME R-275 to JISIG/JNC 13.3 DME and hold. |
| For inop ALS, increase S-LOC 11 Cats C and D visibility to RVR 5500. * RVR 1800 authorized with the use of FD or AP or HUD to DA. | | |

| | | | | |
|--------|----------------|----------------------|-------------|--------|
| ATIS | DENVER APP CON | GRAND JUNCTION TOWER | GND CON | UNICOM |
| 118.55 | 119.7 317.4 | 118.1 (CTAF) 257.8 | 121.7 257.8 | 122.95 |



| | | | | | |
|---|----------------------|-----------------------------|---|----------------------|------------|
| Use I-GJT DME when on the localizer course. | 6700 | 9000 | JNC | JNC | JISIG |
| LOMMA I-GJT (17) RADAR | Procedure Turn NA | JINNY INT I-GJT (7.4) RADAR | VGSi and ILS glidepath not coincident (VGSi Angle 3.00/TCH 51). | JNC R-275 | JISIG |
| 8200 | 112° | 6700 | # I-GJT 2.9 | I-GJT 1.8 | # LOC only |
| GS 3.00° TCH 50 | 9.6 NM | 4.5 NM | 1.1 NM | | |
| CATEGORY | A | B | C | D | |
| S-ILS 11 | *5033/24 200 (200-½) | | | | |
| S-LOC 11 | 5200/24 | 367 (400-½) | 5200/35 367 (400-¾) | 5200/40 367 (400-¾) | |
| CIRCLING | 5360-1 502 (600-1) | 5420-1 562 (600-1) | 5440-1½ 582 (600-1½) | 5540-2¼ 682 (700-2¼) | |
| GRAND JUNCTION, COLORADO | | | | | |
| Amdt 16D 03JAN19 | | | | | |
| 39°07'N-108°32'W | | | | | |
| GRAND JUNCTION RGNL (GJT) ILS or LOC RWY 11 | | | | | |
| HIRL Rwy 11-29 1 | | | | | |
| MIRL Rwy 4-22 1 | | | | | |
| REIL Rwy 4, 22 and 29 | | | | | |
| FAF to MAP 5.7 NM | | | | | |
| Knots | 60 | 90 | 120 | 150 | 180 |
| Min:Sec | 5:42 | 3:48 | 2:51 | 2:17 | 1:54 |

SW-1, 31 DEC 2020 to 28 JAN 2021

SW-1, 31 DEC 2020 to 28 JAN 2021