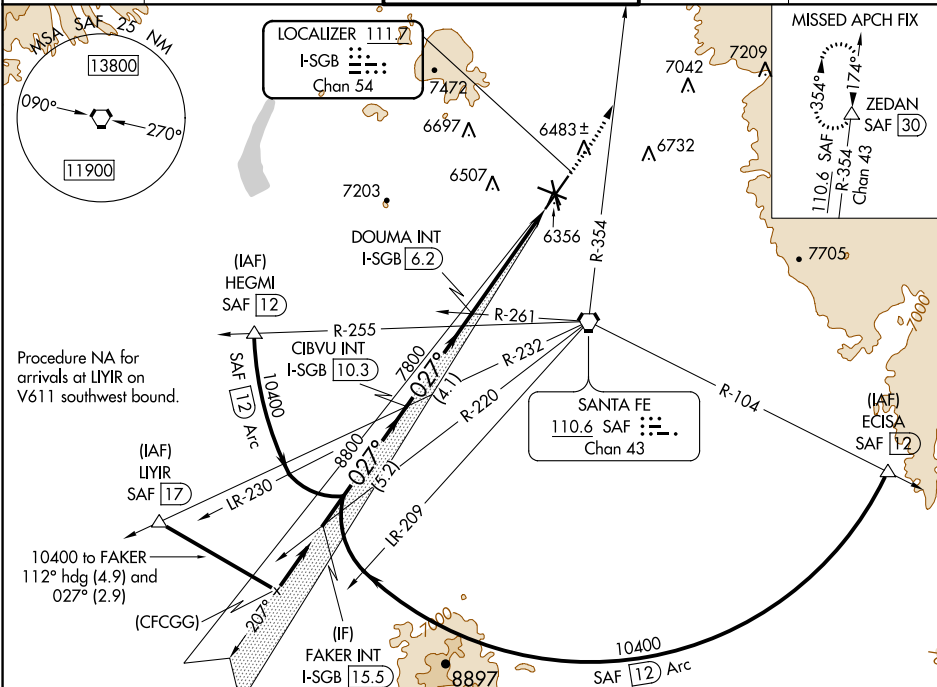


LOC/DME I-SGB	APP CRS	Rwy Idg	8366
111.7	027°	TDZE	6303
Chan 54		Apt Elev	6349

ILS or LOC RWY 2  
SANTA FE MUNI (SAF)

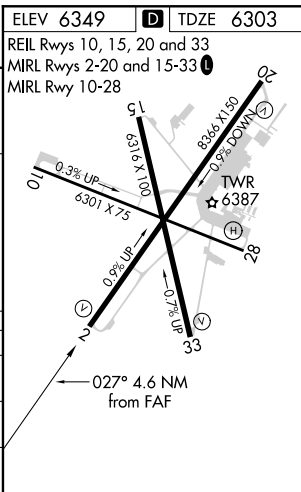
	DME required.	MISSED APPROACH: Climb to 7300 then climbing left turn to 11000 on SAF VORTAC R-354 to ZEDAN/SAF 30 DME and hold.
--	---------------	---

ATIS 128.55	ALBUQUERQUE CENTER 132.8 346.35	SANTA FE TOWER ★ 119.5 (CTAF) 239.3	GND CON 121.7	UNICOM 122.95
----------------	------------------------------------	--	------------------	------------------



DME REQUIRED

VGSI and ILS glidepath not coincident (VGSI Angle 3.00/TCH 69)				
FAKER INT I-SGB 15.5	CIBVU INT I-SGB 10.3	DOUMA INT I-SGB 6.2	7300	11000
10400	8800	7800	SAF	ZEDAN
GS 3.00° TCH 53	5.2 NM	4.1 NM	3.4 NM	1.2 NM
CATEGORY	A	B	C	D
S-ILS 2	6503-¾ 200 (200-¾)			
S-LOC 2	6740-1 437 (400-1) 6740-1¼ 437 (400-1¼)			
CIRCLING	6800-1 451 (500-1)	6920-1 571 (600-1)	7340-3 991 (1000-3)	7660-3 1311 (1400-3)



SW-1, 31 DEC 2020 to 28 JAN 2021

SW-1, 31 DEC 2020 to 28 JAN 2021