

(PIKES2.DEN) 20030  
PIKES TWO DEPARTURE

AL-538 (FAA)

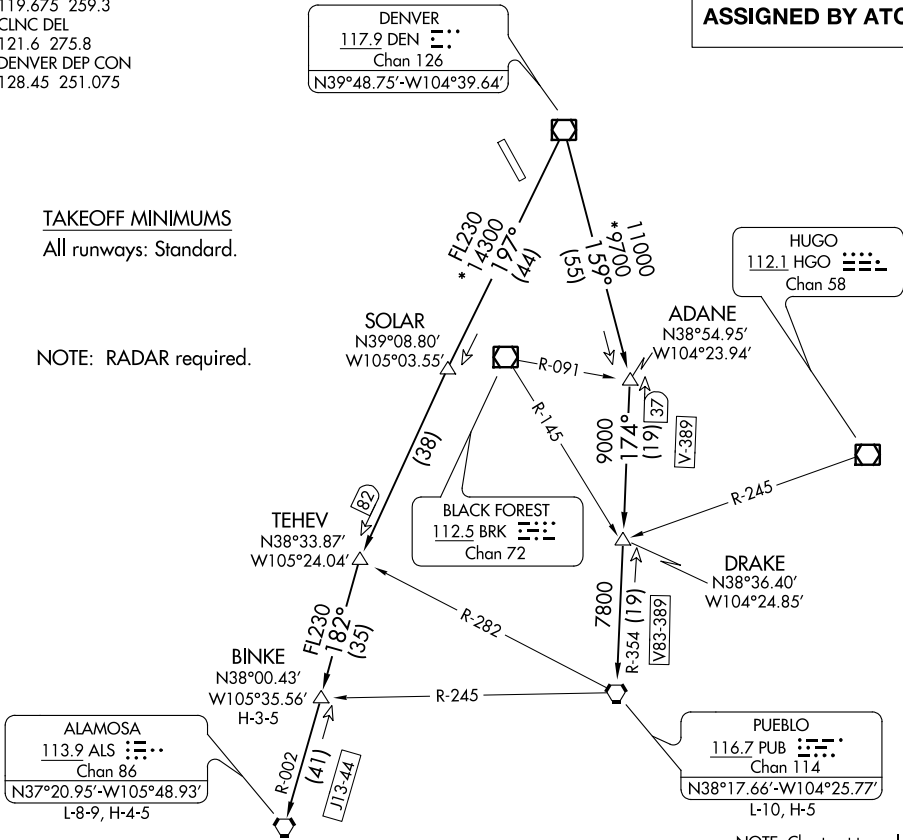
BUCKLEY AFB (BKF)  
AURORA, COLORADO

ATIS  
119.675 259.3  
CLNC DEL  
121.6 275.8  
DENVER DEP CON  
128.45 251.075

TOP ALTITUDE:  
ASSIGNED BY ATC

TAKEOFF MINIMUMS  
All runways: Standard.

NOTE: RADAR required.



NOTE: Chart not to scale.



DEPARTURE ROUTE DESCRIPTION

TAKEOFF ALL RUNWAYS: Fly assigned heading and altitude for RADAR vectors to assigned route. Expect filed altitude 10 minutes after departure.

LOST COMMUNICATIONS: If no transmissions are received within one minute after departure, maintain assigned heading until 7000 feet, then climb to filed altitude via direct DEN VOR/DME, thence via assigned transition. If filed altitude is above 10000 feet, cross DEN VOR/DME at or above 11000 feet.

ALAMOSA TRANSITION (PIKES2.ALS): From over DEN VOR/DME on DEN R-197 to TEHEV, then on ALS R-002 to ALS VORTAC.

BINKE TRANSITION (PIKES2.BINKE): From over DEN VOR/DME on DEN R-197 to TEHEV, then on ALS R-002 to BINKE.

PUEBLO TRANSITION (PIKES2.PUB): From over DEN VOR/DME on DEN R-159 to ADANE, then on PUB R-354 to PUB VORTAC.

PIKES TWO DEPARTURE  
(PIKES2.DEN) 30JAN20

AURORA, COLORADO  
BUCKLEY AFB (BKF)

SW-1, 31 DEC 2020 to 28 JAN 2021

SW-1, 31 DEC 2020 to 28 JAN 2021