


ILS or LOC/DME RWY 32

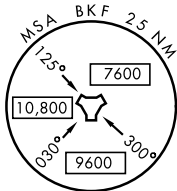
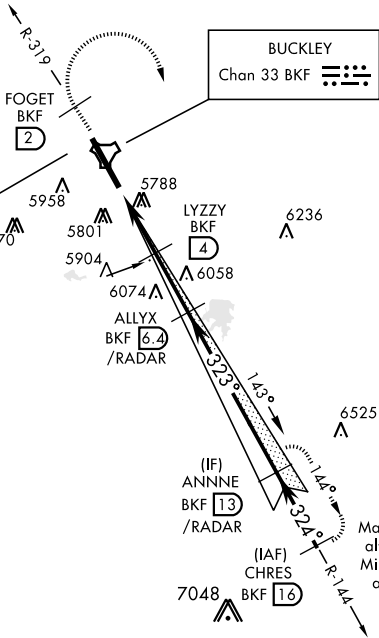
LOC I-BKF <b>109.7</b>	APCH CRS <b>323°</b>	Rwy ldg <b>11,006</b> TDZE <b>5663</b> Arprt Elev <b>5663</b>	AL-538 [USAF]	BUCKLEY AFB (KBKF)
▼ * When ALS inop, increase CAT ABCDE RVR to 40 and vis to ¼ miles. ** When ALS inop, increase CAT AB RVR to 55 and vis to 1 mile, CAT CDE vis to 1¾ miles. *** Circling NA East of Rwy 14-32.			ALSF-1 	MISSED APPROACH: Climb on BKF TACAN R-319 to FOGET, then climbing right turn to 8200 and intercept BKF R-144 to ANNNE and hold or as directed by ATC.

ATIS ★ <b>119.675 259.3</b>	DENVER APP CON <b>128.45 251.075</b>	BUCKLEY TOWER ★ <b>121.0 291.675</b>	GND CON <b>121.6 275.8</b>	CLNC DEL <b>121.6 275.8</b>
--------------------------------	---	---	-------------------------------	--------------------------------

Missed approach requires use of RNAV or ATC RADAR monitoring.

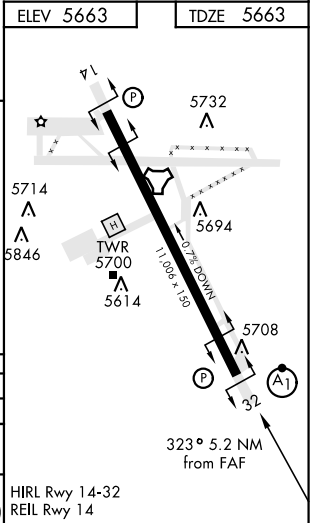
CAT E remain within 4.25 NM of Rwy when circling.

LOCALIZER 109.7  
I-BKF



EMERG SAFE ALT 100 NM 16,500

8200 BKF R-319	FOGET	ANNNE	ALLYX 6.4 /RADAR	ANNNE 13 /RADAR	CHRES 16 8100
TACAN	HIPER 1.7	LYZZY 4 /RADAR	6600	7400	GS 3.00° TCH 45
.5 NM    2.3 NM    2.4 NM					
CATEGORY	A	B	C	D	E
S-ILS 32 *	5863/24 200 (200-½)				
S-LOC 32 **	6280/24 617 (700-½)		6280-1¾ 617 (700-1¾)		
*** CIRCLING	6280-1 617 (700-1)		6360-2 697 (700-2)	6400-2¼ 737 (800-2¼)	6420-2¾ 757 (800-2¾)



ILS or LOC/DME RWY 32

SW-1, 31 DEC 2020 to 28 JAN 2021

SW-1, 31 DEC 2020 to 28 JAN 2021