

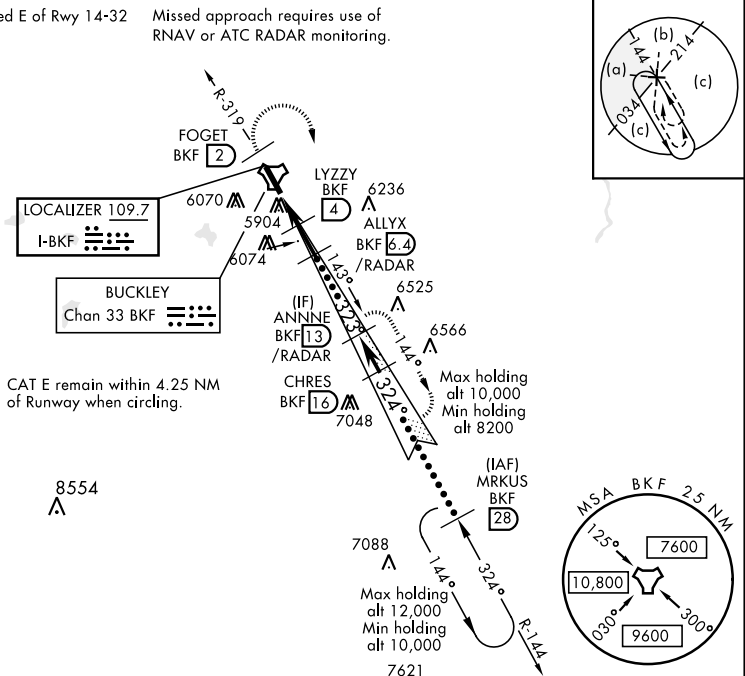
HI-ILS or LOC/DME RWY 32

LOC I-BKF 109.7	APCH CRS 323°	Rwy ldg 11,006 TDZE 5663 Arpt Elev 5663	JAL-538 [USAF]	BUCKLEY AFB (KBKF)
---------------------------	-------------------------	--	----------------	--------------------

▼ * When ALS inop, increase CAT CDE RVR to 40 and vis to $\frac{3}{4}$ miles. ** When ALS inop, increase CAT CDE vis to $1\frac{3}{4}$ miles.	ALSF-1 (A1)	MISSED APPROACH: Climb on BKF TACAN R-319 to FOGET, then climbing right turn to 8200 and intercept BKF R-144 to ANNNE and hold or as directed by ATC.
---	-----------------------	--

ATIS ★ 119.675 259.3	DENVER APP CON 128.45 251.075	BUCKLEY TOWER ★ 121.0 291.675	GND CON 121.6 275.8	CLNC DEL 121.6 275.8
---------------------------------------	--	--	--------------------------------------	---------------------------------------

*** Circling not authorized E of Rwy 14-32 Missed approach requires use of RNAV or ATC RADAR monitoring.



EMERG SAFE ALT 100 NM 16,500

8200
BKF R-319
FOGET
ANNNE
†LOC Only

TACAN
HUPER 1.7
LYZZY 4
ALLYX 6.4
CHRES 16
MRKUS 28

323°
324°
10,000
8100
8000
GS 3.00°
TCH 45

5660
7400

1.5 NM
2.3 NM
2.4 NM

CATEGORY	C	D	E
S-ILS 32 *	5863/24	200	(200-½)
S-LOC 32 **	6280-1⅜	617	(700-1⅜)
*** CIRCLING	6360-2 697 (700-2)	6400-2¼ 737 (800-2¼)	6420-2¾ 757 (800-2¾)

5714
5846
5732
5694
5708
5614

TWR 5700

323°
324°
10,000
8100
8000
GS 3.00°
TCH 45

1.5 NM
2.3 NM
2.4 NM

REIL Rwy 14
HIRL Rwy 14-32

323° 5.2 NM from FAF

HI-ILS or LOC/DME RWY 32