

CLOVIS, NEW MEXICO

# RNAV (GPS) RWY 31

|          |           |      |
|----------|-----------|------|
| APCH CRS | Rwy Idg   | 8196 |
| 308°     | TDZE      | 4270 |
|          | Arpt Elev | 4295 |

AL-512 (USAF)

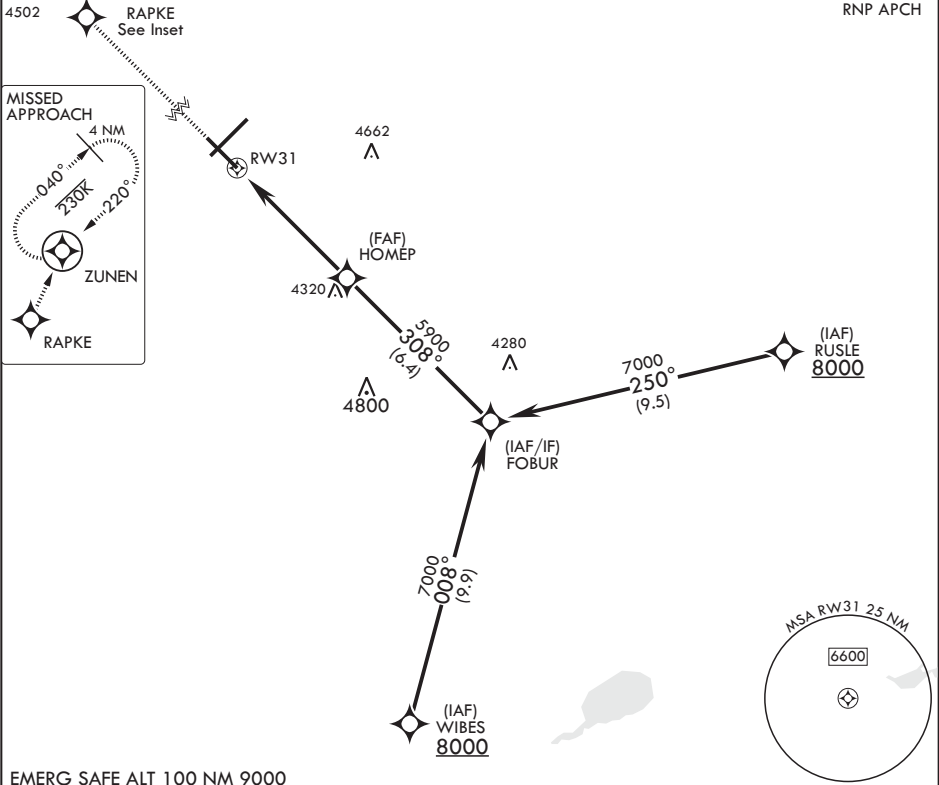
CANNON AFB (KCVS)

**▼** \* When ALS inop, increase CAT AB vis to 1 mile, CAT CDE vis to 1 3/8 miles.



**MISSED APPROACH:** Climb to 6000 direct RAPKE, then turn right to ZUNEN and climb to 7000 and hold.

|                     |                                 |                       |                        |                           |
|---------------------|---------------------------------|-----------------------|------------------------|---------------------------|
| ATIS<br>119.1 269.9 | CANNON APP CON<br>118.425 352.1 | TOWER<br>120.4 270.25 | GND CON<br>121.9 275.8 | CLNC DEL<br>120.2 293.225 |
|---------------------|---------------------------------|-----------------------|------------------------|---------------------------|



EMERG SAFE ALT 100 NM 9000

6000

RAPKE

FOBUR

ELEV 4295

TDZE 4270

7000

HOME

308°

5900

1.3 NM to RW31

≤ 3.06°

TCH 41

4.9 NM

CATEGORY

A

B

C

D

E

LNAV MDA\*

4720-½

450 (500-½)

4720-⅞

450

(500-⅞)

CIRCLING

4840-1

545 (600-1)

4860-1½

565 (600-1½)

5000-2¼

705 (800-2¼)

5020-2½

725 (800-2½)

HIRL all Rwy

REIL all Rwy

308° to RW31

BCN 4433

TWR 4437

10003 x 150

8195 x 130

0.3% UP

A1

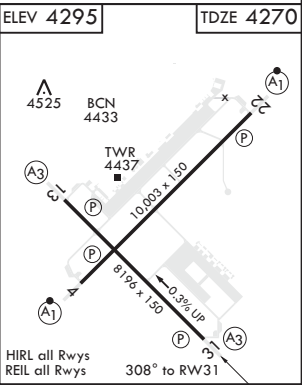
A3

A1

A3

A1

A3



CLOVIS, NEW MEXICO

34°23'N - 103°19'W

CANNON AFB (KCVS)

Amdt 5 10SEP20

# RNAV (GPS) RWY 31

SW-1, 31 DEC 2020 to 28 JAN 2021

SW-1, 31 DEC 2020 to 28 JAN 2021