

WAAS CH 70714 W23A	APP CRS 233°	Rwy Idg TDZE Apt Elev 5590 5504 5506
--	------------------------	--

RNAV (GPS) RWY 23

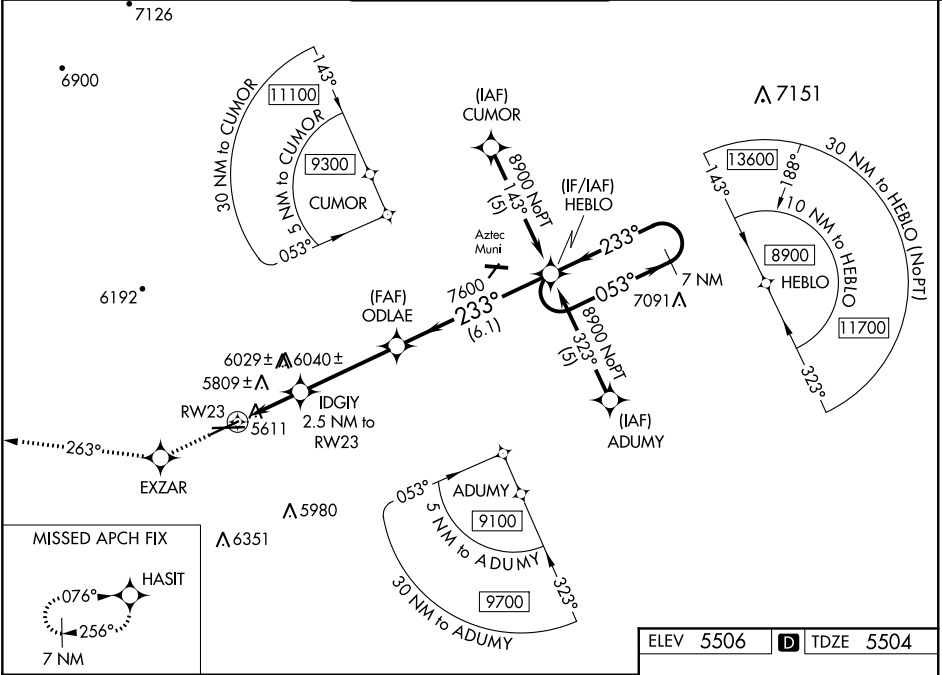
FOUR CORNERS RGNL (FMN)

⚠

For uncompensated Baro-VNAV systems, LNAV/VNAV NA below -26°C (-14°F) or above 38°C (100°F). Circling NA Cat D southeast of Rwy 5 and 25. DME/DME RNP-0.3 NA. Visibility reduction by helicopters NA.

MISSED APPROACH: Climb to 8000 direct EXZAR and via track 263° to HASIT and hold.

ATIS 127.15	DENVER CENTER 118.575 348.7	FARMINGTON TOWER★ 118.9 (CTAF) 257.8	GND CON 121.7	UNICOM 122.95
-----------------------	---------------------------------------	--	-------------------------	-------------------------



8000	EXZAR	tr 263°	HASIT		
CATEGORY		A	B	C	D
LPV	DA	5798-1 294 (300-1)			
LNAV/ VNAV	DA	6138-2¼ 634 (700-2¼)			
LNAV	MDA	6180-1 676 (700-1)	6180-2 676 (700-2)	6180-2¼ 676 (700-2¼)	
CIRCLING		6180-1 674 (700-1)	6180-2 674 (700-2)	6180-2¼ 674 (700-2¼)	

