

LOC I-DRO 109.1	APP CRS 027°	Rwy Idg TDZE Apt Elev 9201 6643 6689
---------------------------	------------------------	--

ILS or LOC/DME RWY 3
DURANGO-LA PLATA COUNTY (DRO)

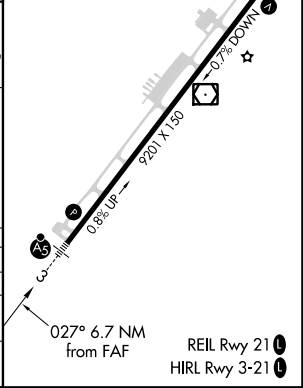
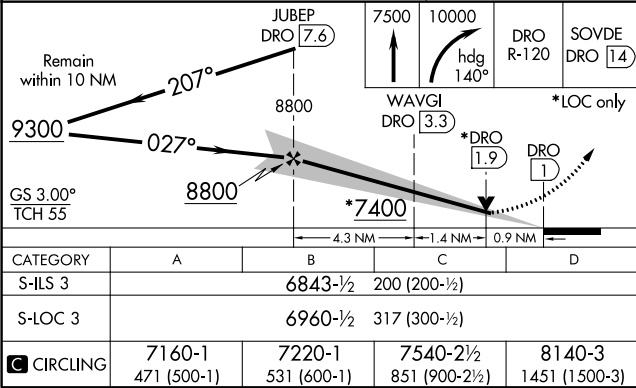
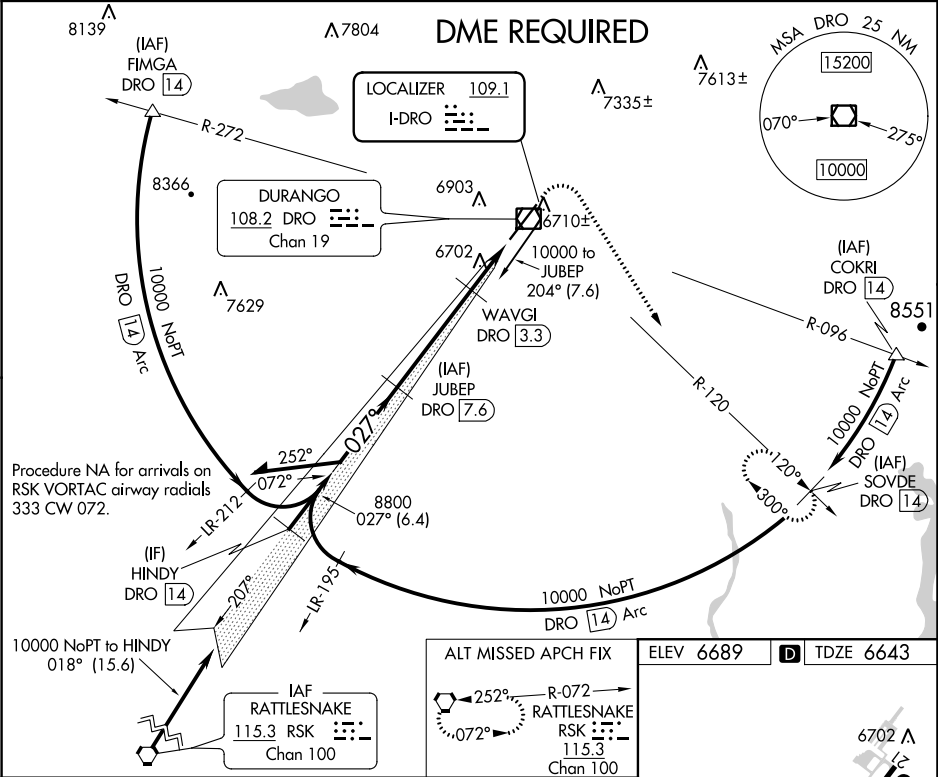
NA

DME required. DME from DRO VOR/DME. Simultaneous reception of I-DRO and DRO VOR/DME required. For inop MALSR, increase S-LOC 3 Cat C/D visibility to ¾ mile.

MALSR

MISSED APPROACH: Climb to 7500 then climbing right turn to 10000 on heading 140° and on DRO VOR/DME R-120 to SOVDE/DRO 14 DME and hold.

ASOS 120.625	DENVER CENTER 118.575 348.7	UNICOM 122.8 (CTAF)
------------------------	---------------------------------------	-------------------------------



SW-1, 31 DEC 2020 to 28 JAN 2021

SW-1, 31 DEC 2020 to 28 JAN 2021