

APP CRS	Rwy Idg	8018
080°	TDZE	4314
	Apt Elev	4314

RNAV (GPS) RWY 8

DEMING MUNI (DMN)

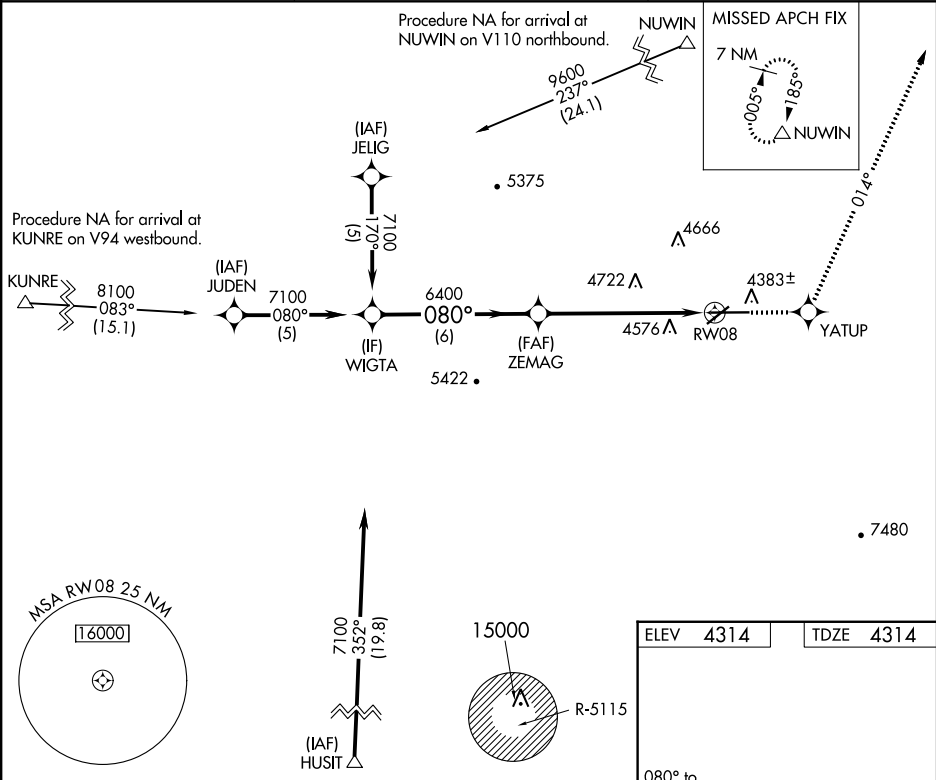
▼

⚠

DME/DME RNP-0.3 NA. When local altimeter setting not received, use Las Cruces altimeter setting and increase all MDA 120 feet; increase LNAV Cats C and D visibility ¼ mile, Circling Cat B visibility ¼ mile and Circling Cats C and D visibility ½ mile. Rwy 8 helicopter visibility reduction below 1 SM NA. Straight-in Rwy 8 NA at night, Circling Rwy 8, 22 NA at night.

MISSED APPROACH:
Climb to 8000 direct YATUP and on track 014° to NUWIN and hold.

ASOS 118.525	ALBUQUERQUE CENTER 128.2 285.5	UNICOM 122.8 (CTAF) 0
-----------------	-----------------------------------	--------------------------



VGSI and RNAV glidepath not coincident (VGSI Angle 3.00/TCH 43).

8000

YATUP

tr 014°

NUWIN

WIGTA

ZEMAG

RW08

7100

6400

3.05°

TCH 50

6 NM

6.3 NM

CATEGORY	A	B	C	D
LNAV MDA	4920-1	606 (700-1)	4920-1¾ 606 (700-1¾)	4920-2 606 (700-2)
CIRCLING	4920-1 606 (700-1)	4940-1 626 (700-1)	5020-2 706 (800-2)	5020-2¼ 706 (800-2¼)

080° to RW08

0.3% DOWN

0.3% UP

8018 X 75

5675

26

MIRL Rwy 4-22
MIRL Rwy 8-26 0