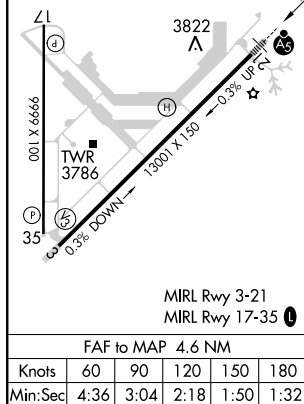
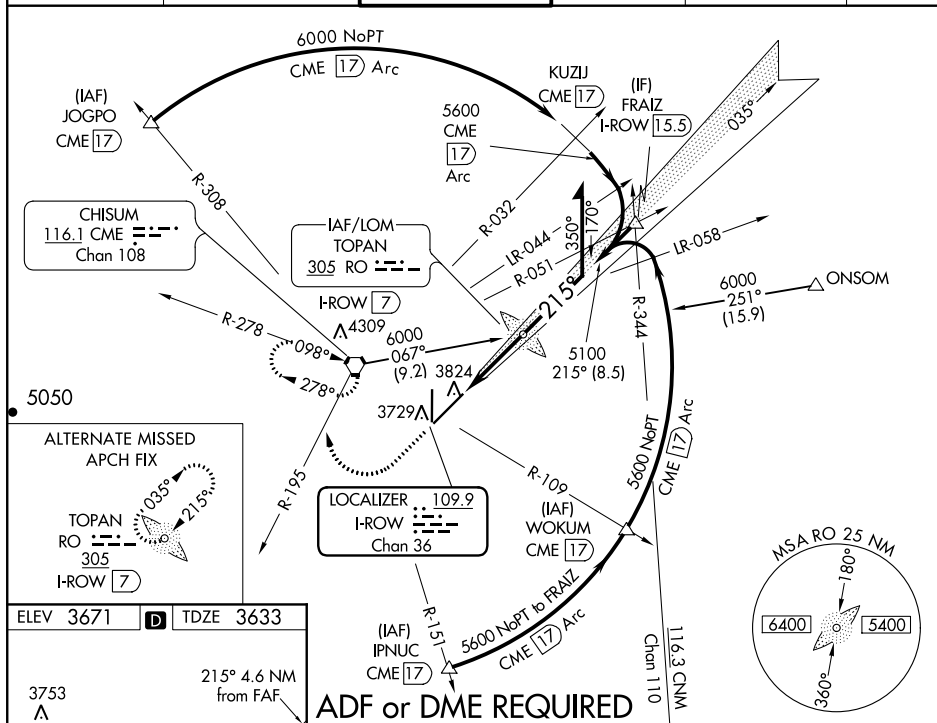


ILS or LOC RWY 21
ROSWELL AIR CENTER (ROW)

MALSR

MISSED APPROACH: Climb to 5000 then climbing right turn to 6000 on CME VORTAC R-195 to CME VORTAC and hold.

ATIS 128.45 306.2	ROSWELL APP CON ★ 119.6 239.0	ROSWELL TOWER ★ 118.5 (CTAF) 0 233.7	GND CON 121.9 348.6	CLNC DEL 132.875 282.25	UNICOM 122.95
----------------------	----------------------------------	---	------------------------	----------------------------	------------------



5000 ↑

6000 CME R-195

CME

Use I-ROW DME when on LOC course.

*LOC only.

I-ROW 2.4

*I-ROW 3.5

5018

035°

215°

5600

5100

GS 2.70°

TCH 61

1.1 NM

3.5 NM

CATEGORY	A	B	C	D
S-ILS 21	3833-½ 200 (200-½)			
S-LOC 21	4020-½	387 (400-½)	4020-⅝	387 (400-⅝)
CIRCLING	4140-1	469 (500-1)	4140-1½ 469 (500-1½)	4240-2 569 (600-2)

SW-1, 31 DEC 2020 to 28 JAN 2021

SW-1, 31 DEC 2020 to 28 JAN 2021