

HI-ILS or LOC RWY 21

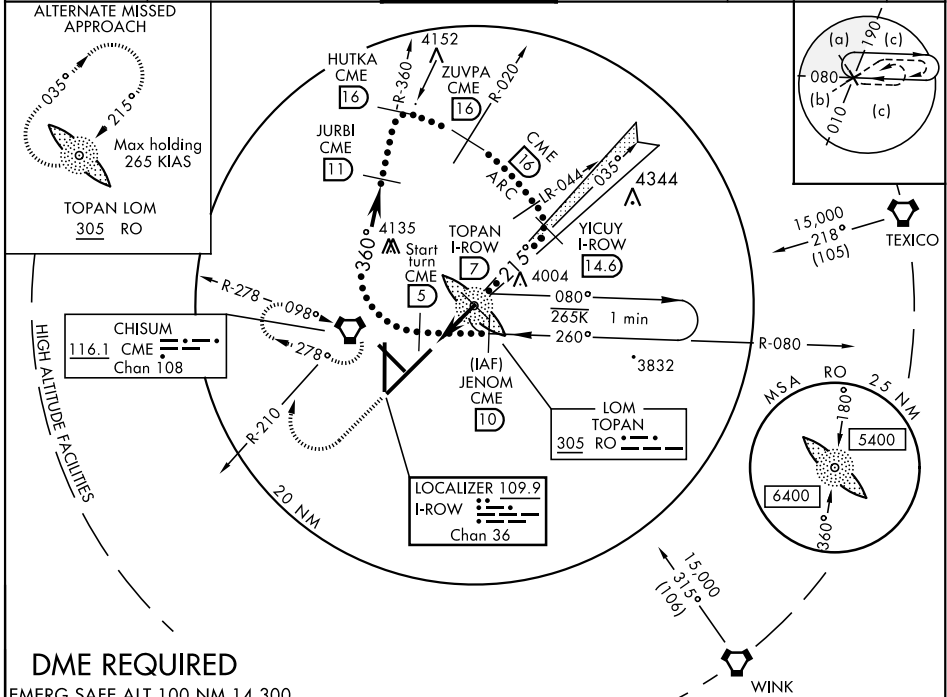
LOC/DME I-ROW 109.9 Chan 36	APCH CRS 215°	Rwy Idg 13,001 TDZE 3633 Arprt Elev 3671	JAL-354 [USAF]	ROSWELL AIR CENTER (KROW)
---	-------------------------	---	----------------	---------------------------

✦ When ALS inop, increase CAT E vis to $\frac{3}{4}$ mile.
✦✦ When ALS inop, increase CAT E vis to $1\frac{1}{2}$ miles.

MALSR
A5

MISSED APPROACH: Climb to 5000 then climbing right turn to 6500 on CME VORTAC R-210 to CME and hold.

ATIS 128.45 306.2	ROSWELL APP CON 119.6 239.0	ROSWELL TOWER ★ 118.5 (CTAF) 0 233.7	GND CON 121.9 348.6	CLNC DEL 132.875 282.25	ASR
-----------------------------	---------------------------------------	--	-------------------------------	-----------------------------------	-----



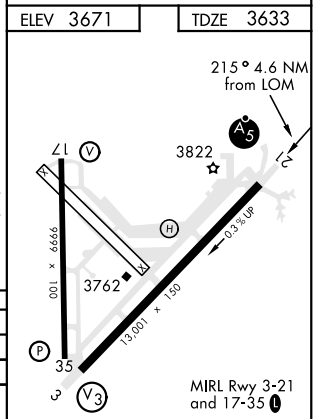
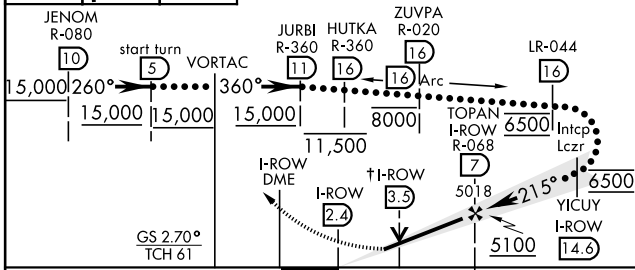
DME REQUIRED
EMERG SAFE ALT 100 NM 14,300

5000 6500 CME

↑ CME R-210

Use I-ROW DME when on localizer course.

† For Localizer use only.



CATEGORY	C	D	E
S-ILS 21 ★	3833- $\frac{1}{2}$	200	(200- $\frac{1}{2}$)
S-LOC 21 ★★	4020- $\frac{5}{8}$	396	(400- $\frac{3}{8}$)
CIRCLING	4140- $1\frac{1}{2}$ 469 (500- $1\frac{1}{2}$)	4240-2 569 (600-2)	4360-2 $\frac{1}{2}$ 689 (700-2 $\frac{1}{2}$)