

APP CRS	Rwy Idg	8308
170°	TDZE	4729
	Apt Elev	4729

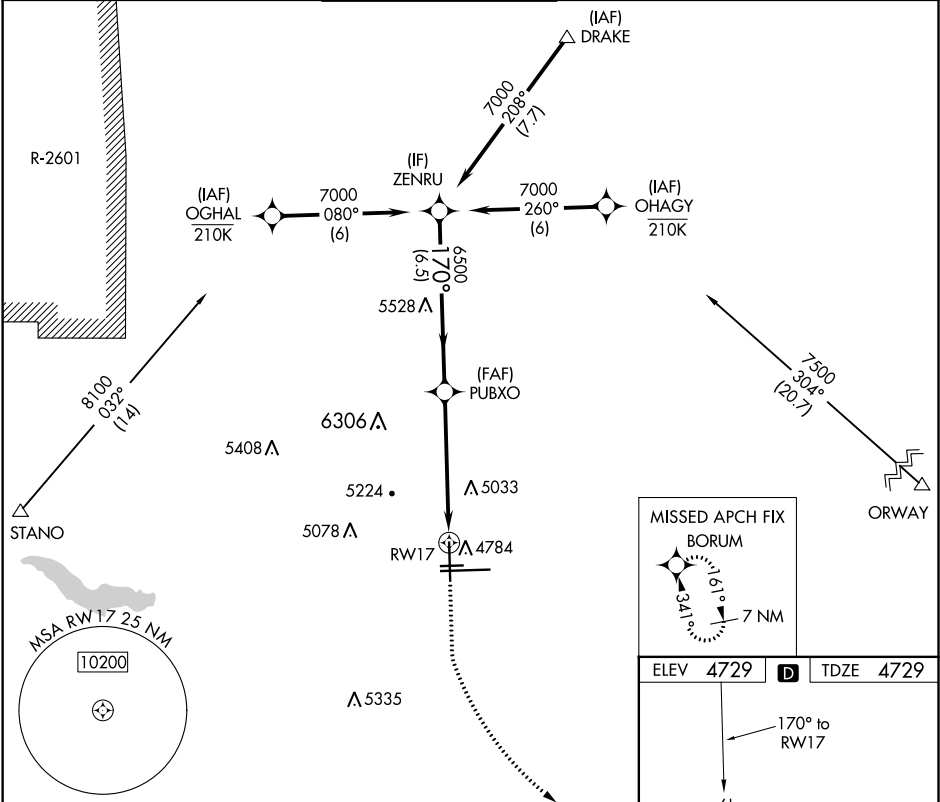
RNAV (GPS) RWY 17
PUEBLO MEMORIAL (PUB)

⚠ DME/DME RNP-0.3 NA. Rwy 17 helicopter reduction below ¾ SM NA.

⚠ VDP NA when using La Junta altimeter setting. When local altimeter setting not received, use La Junta altimeter setting and increase all MDA 200 feet; increase LNAV Cat B visibility and Circling Cat B/C visibility ¼ mile, Circling Cat D visibility ½ mile.

MISSED APPROACH: Climb to 6000 then climbing left turn to 7500 direct BORUM and hold.

ATIS 125.25	DENVER APP CON ★ 120.1 290.5	PUEBLO TOWER ★ 119.1 (CTAF) 257.8	GND CON 121.9	CLNC DEL 120.9	UNICOM 122.95
----------------	---------------------------------	--------------------------------------	------------------	-------------------	------------------



ZENRU		VGSi and descent angles not coincident (VGSi Angle 3.00/TCH 54).		6000	7500	BORUM
7000		170°		6500		2.7 NM to RWY 17
6500		3.00°		TCH 50		RWY 17
6.5 NM		2.7 NM		2.7 NM		
CATEGORY	A	B	C	D		
LNAV MDA	5640-1¼	911 (1000-1¼)	5640-2½	911 (1000-2½)		
CIRCLING	5640-1¼	911 (1000-1¼)	5640-2¾	5640-3		
			911 (1000-2¾)	911 (1000-3)		

HIRL Rwy 8R-26L

MIRL Rws 17-35 and 8L-26R

REIL Rws 8L, 17, 26L, 26R and 35