

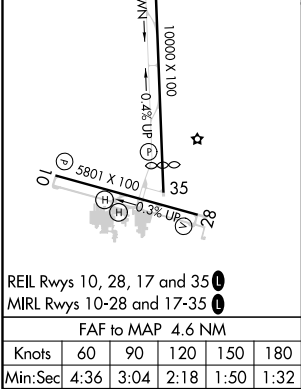
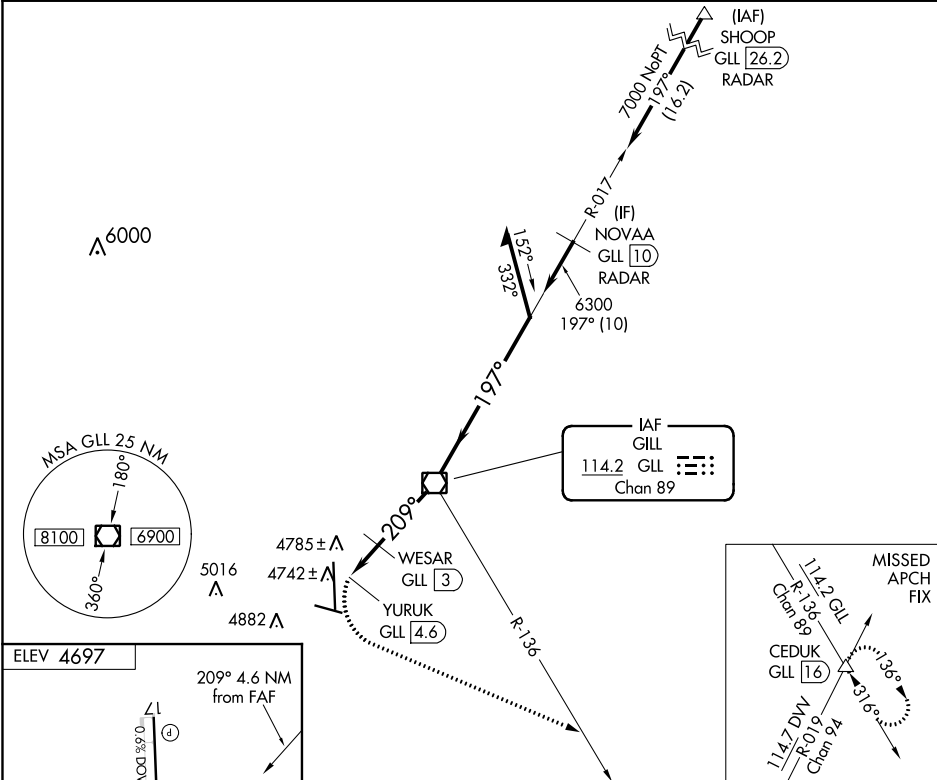
VOR/DME GLL <b>114.2</b> Chan <b>89</b>	APP CRS <b>209°</b>	Rwy Idg TDZE Apt Elev	<b>N/A</b> <b>N/A</b> <b>4697</b>
---	------------------------	-----------------------------	---

VOR-A

GREELEY-WELD COUNTY (GXY)

<b>⚠</b> When local altimeter setting not received, use Northern Colorado Rgnl altimeter setting and increase all MDA 100 feet and visibility Cat C/D and WESAR fix minimums Cat C/D visibility ¼ SM. DME required.	MISSED APPROACH: Climbing left turn to 7000 on heading 100° and GLL VOR/DME R-136 to CEDUK INT/GLL 16 DME and hold.
---	---

AWOS-3PT <b>135.175</b>	DENVER APP CON <b>134.85 251.125</b>	CLNC DEL <b>126.65</b>	UNICOM <b>122.8 (CTAF) 0</b>
----------------------------	---	---------------------------	---------------------------------



7000	GLL R-136	CEDUK	GLL VOR/DME	Remain within 10 NM
hdg 100°				
WESAR GLL 3	YURUK GLL 4.6	5300*	6300	
209°	197°	017°		
1.6 NM	3 NM			
WESAR FIX MINIMUMS (DME REQUIRED)				
CATEGORY	A	B	C	D
CIRCLING	5300-1 603 (700-1)		5300-1¾ 603 (700-1¾)	5380-2¼ 683 (700-2¼)
CIRCLING	5120-1 423 (500-1)	5200-1 503 (600-1)	5200-1½ 503 (600-1½)	5380-2¼ 683 (700-2¼)