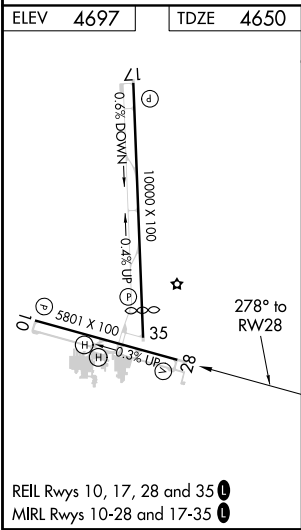
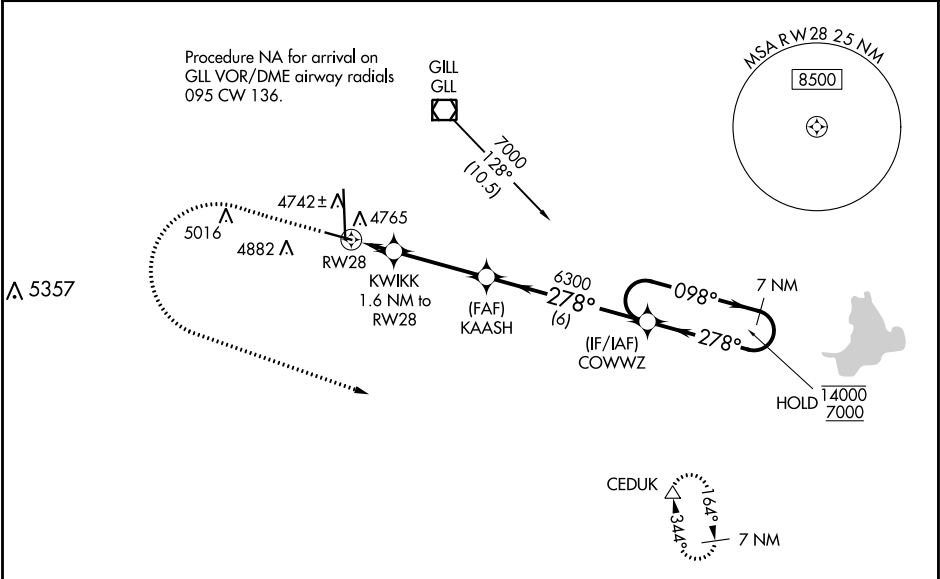


WAAS CH <b>86808</b> <b>W28A</b>	APP CRS <b>278°</b>	Rwy Idg TDZE Apt Elev	<b>5801</b> <b>4650</b> <b>4697</b>
--	------------------------	-----------------------------	---

RNAV (GPS) RWY 28  
GREELEY-WELD COUNTY (GXY)

RNP APCH.		MISSED APPROACH: Climb to 6300 then climbing left turn to 7000 direct CEDUK and hold.	
Baro-VNAV NA when using Fort Collins/Loveland altimeter setting. For uncompensated Baro-VNAV systems, LNAV/VNAV NA below -24°C or above 54°C. When local altimeter setting not received, use Fort Collins/Loveland altimeter setting: increase LPV DA to 4935 feet and visibility ¼ SM, LNAV/VNAV DA to 5061 feet and visibility ¼ SM; increase all MDAs 100 feet and visibility Cats C and D ¼ SM.			
AWOS-3PT <b>135.175</b>	DENVER APP CON <b>134.85 251.125</b>	CLNC DEL <b>126.65</b>	UNICOM <b>122.8</b> (CTAF) <b>0</b>



6300		7000	CEDUK	VGSI and RNAV glidepath not coincident (VGSI angle 3.00/TCH 27).	7 NM Holding Pattern
*LNAV only		*KWIKK 1.6 NM to RW28	KAASH	6300	5200
RW28		1.6 NM	3.5 NM	6 NM	7 NM
CATEGORY		A	B	C	D
LPV DA		4850-¾ 200 (200-¾)			
LNAV/VNAV DA		4976-1 326 (300-1)			
LNAV MDA		5080-1	430 (400-1)	5080-1¼	430 (400-1¼)
CIRCLING		5120-1 423 (500-1)	5200-1 503 (600-1)	5200-1½ 503 (600-1½)	5380-2¼ 683 (700-2¼)