

WAAS CH 62900 W10A	APP CRS 097°	Rwy Idg TDZE 4661 Apt Elev 4697
--	------------------------	---

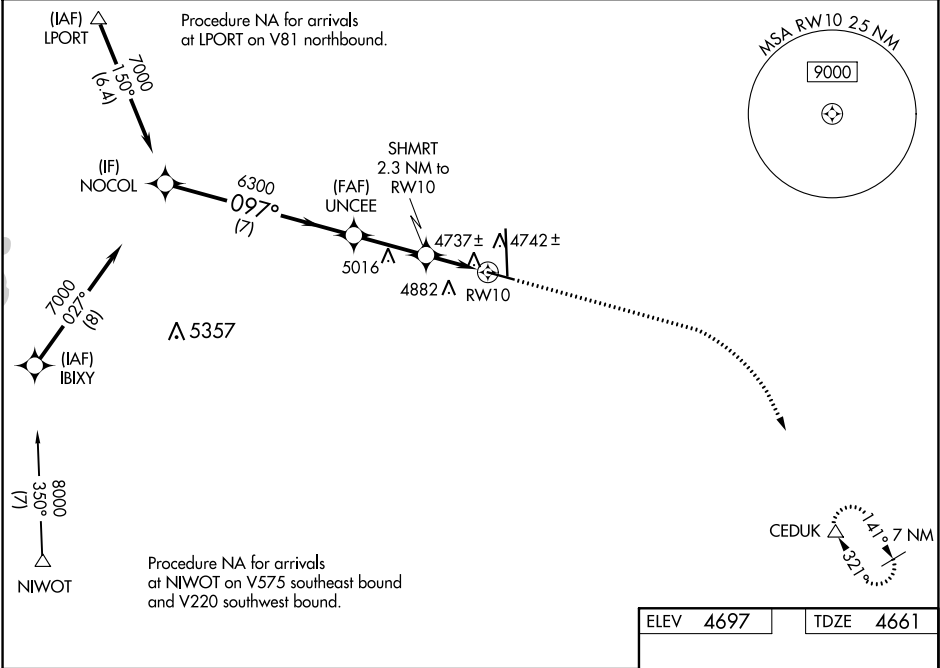
RNAV (GPS) RWY 10

GREELEY-WELD COUNTY (GXY)

Baro-VNAV and VDP NA when using Northern Colorado Rgnl altimeter setting. For uncompensated Baro-VNAV systems, LNAV/VNAV NA below -24°C (-11°F) or above 49°C (121°F). When local altimeter setting not received, use Northern Colorado Rgnl altimeter setting: increase all DA to 4996 feet and all visibilities ¼ SM; increase all MDAs 100 feet and visibility Cats C and D ¼ SM. DME/DME RNP-0.3 NA.

MISSED APPROACH: Climb to 5400 then climbing right turn to 7000 direct CEDUK and hold.

AWOS-3PT 135.175	DENVER APP CON 134.85 251.125	CLNC DEL 126.65	UNICOM 122.8 (CTAF)
----------------------------	---	---------------------------	-------------------------------



NOCOL		UNCEE		SHMRT 2.3 NM to RW10		CEDUK	
7000		097°		*5440		*LNAV only	
GP 3.00° TCH 50		6300		*0.9 NM to RW10		RW10	
7 NM		2.7 NM		1.4 NM		0.9 NM	
CATEGORY	A	B	C	D			
LPV DA	4911-3/4		250 (300-3/4)				
LNAV/ VNAV DA	4911-3/4		250 (300-3/4)				
LNAV MDA	5000-1		339 (400-1)				
CIRCLING	5120-1 423 (500-1)	5200-1 503 (600-1)	5200-1½ 503 (600-1½)	5380-2¼ 683 (700-2¼)			

ELEV 4697

TDZE 4661

0.6% DOWN

0.4% UP

0.3% UP

REIL Rwy 10, 28, 17 and 35

MIRL Rwy 10-28 and 17-35