

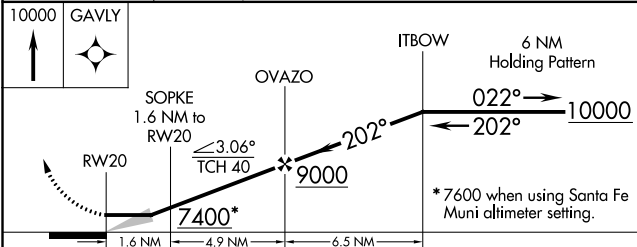
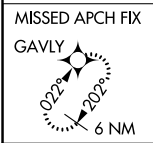
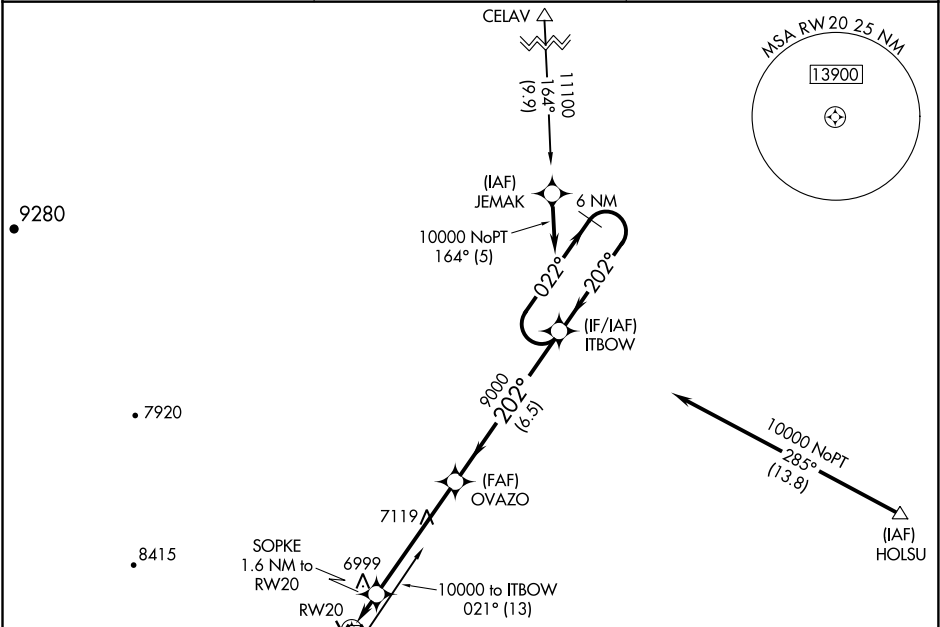
APP CRS	Rwy Idg	5006
202°	TDZE	6867
	Apt Elev	6877

RNAV (GPS) RWY 20

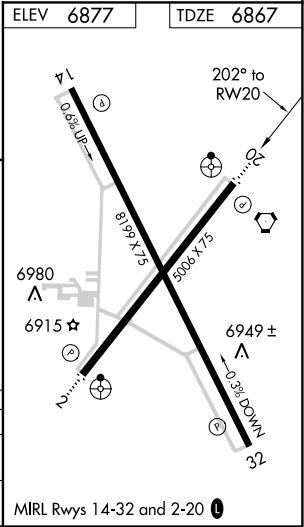
LAS VEGAS MUNI (LVS)

RNP APCH.	ODALS	MISSED APPROACH: Climb to 10000 direct GAVLY and hold.
▼ If local altimeter setting not received, use Santa Fe Muni altimeter setting and increase all MDAs 200 feet. ▲ Straight-in minimums NA when using Santa Fe Muni altimeter setting.		

ASOS 118.525	ALBUQUERQUE CENTER 132.8 346.35	UNICOM 122.8 (CTAF) 0
-----------------	------------------------------------	--------------------------



CATEGORY	A	B	C	D
RNAV MDA	7260-¾	393 (400-¾)		NA
CIRCLING	7400-1 523 (600-1)	7420-1 543 (600-1)	7420-1½ 543 (600-1½)	NA



SW-1, 31 DEC 2020 to 28 JAN 2021

SW-1, 31 DEC 2020 to 28 JAN 2021