

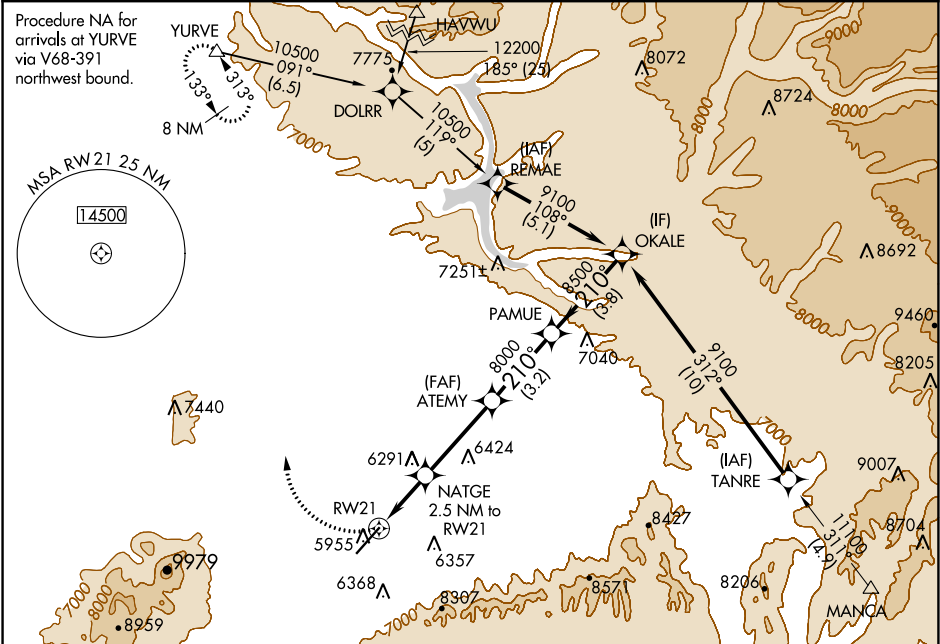
APP CRS	Rwy Idg	7205
210°	TDZE	5913
	Apt Elev	5918

RNAV (GPS) Y RWY 21

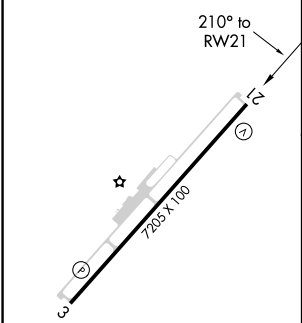
CORTEZ MUNI (C/EZ)

<div><div></div><div></div></div>	DME/DME RNP-0.3 NA. When VGSI inop, procedure NA at night.	MISSED APPROACH: Climbing right turn to 9800 direct YURVE and hold.
-----------------------------------	---	---

ASOS 135.625	DENVER CENTER 118.575 348.7	UNICOM 122.8 (CTAF) 0
-----------------	--------------------------------	---------------------------------



ELEV 5918	D	TDZE 5913
-----------	----------	-----------



	YURVE	NATGE 2.5 NM to RW21	ATEMY	PAMUE	OKALE	
	9800	6740	8000	8500	9100	Procedure Turn NA
	2.5 NM	3.6 NM	3.2 NM	3.8 NM		
CATEGORY	A		B		C	D
LNAV MDA	6560-1 647 (700-1)		6560-1¾ 647 (700-1¾)		6560-2 647 (700-2)	
CIRCLING	6560-1 642 (700-1)		6600-2 682 (700-2)		6800-3 882 (900-3)	