

WAAS CH 49112 W35A	APP CRS 352°	Rwy Idg TDZE 6075 Apt Elev 6187
--	------------------------	---

RNAV (GPS) Y RWY 35L

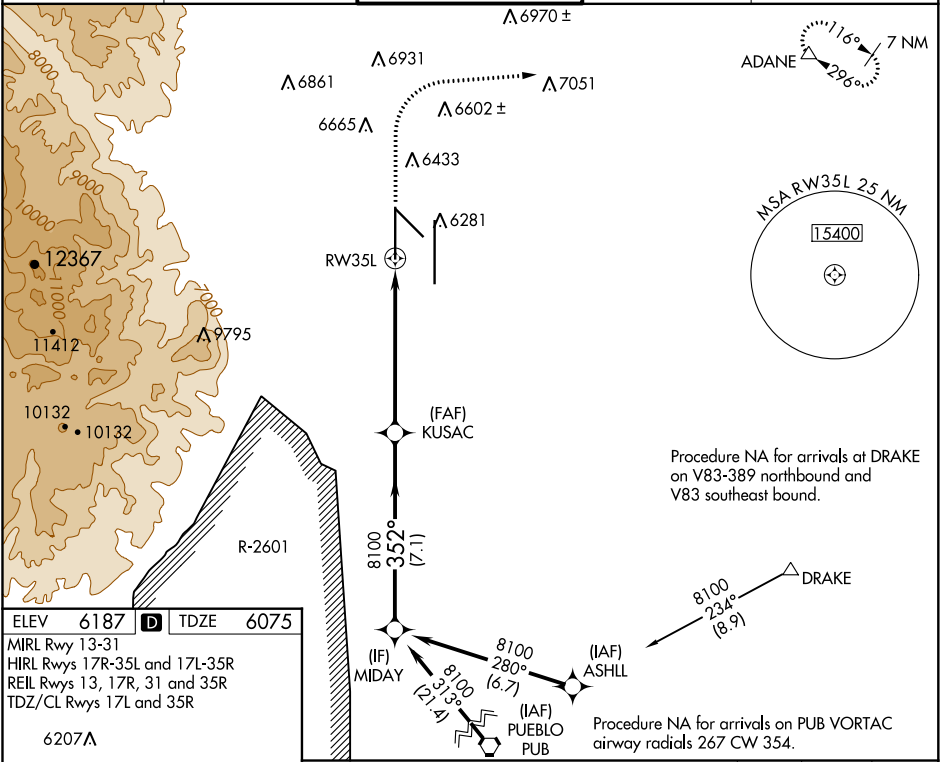
CITY OF COLORADO SPRINGS MUNI (COS)

⚠ For uncompensated Baro-VNAV systems, LNAV/VNAV NA below -21°C (-5°F) or above 54°C (130°F). DME/DME RNP-0.3 NA. For inop MALSR increase LNAV Cat C and D visibility to RVR 5500. RADAR monitoring required when R-2601 in use. # RVR 1800 authorized with use of FD or AP or HUD to DA.

MALSR

MISSED APPROACH:
Climb to 6700 then climbing right turn to 9000 direct ADANE and hold.

ATIS 125.0 254.3	SPRINGS APP CON 124.0 257.875	SPRINGS TOWER 119.9 360.6	GND CON 121.7 348.6	CLNC DEL 134.45 363.125
----------------------------	---	-------------------------------------	-------------------------------	-----------------------------------



ELEV **6187** **D** TDZE **6075**

MIRL Rwy 13-31
HIRL Rwy 17R-35L and 17L-35R
REIL Rwy 13, 17R, 31 and 35R
TDZ/CL Rwy 17L and 35R

6207A

VGSI and RNAV glidepath not coincident (VGSI Angle 3.00/TCH 71).			
MIDAY			
GP 3.00° TCH 55			
KUSAC 8100			
7.1 NM 5.3 NM 1 NM			
CATEGORY	A	B	C
LPV DA #	6275/24 200 (100-½)		
LNAV/VNAV DA	6380/30 305 (200-⅝)		
LNAV MDA	6440/24 365 (300-½)	6440/35 365 (300-⅝)	
C CIRCLING	6740-1 553 (600-1)	6800-1 613 (700-1)	7040-2½ 853 (900-2½)
			7260-3 1073 (1100-3)

SW-1, 31 DEC 2020 to 28 JAN 2021

SW-1, 31 DEC 2020 to 28 JAN 2021