

WAAS CH 69618 W17A	APP CRS 172°	Rwy Idg TDZE 6187 Apt Elev 6187	13501
--	------------------------	---	--------------

RNAV (GPS) Y RWY 17L

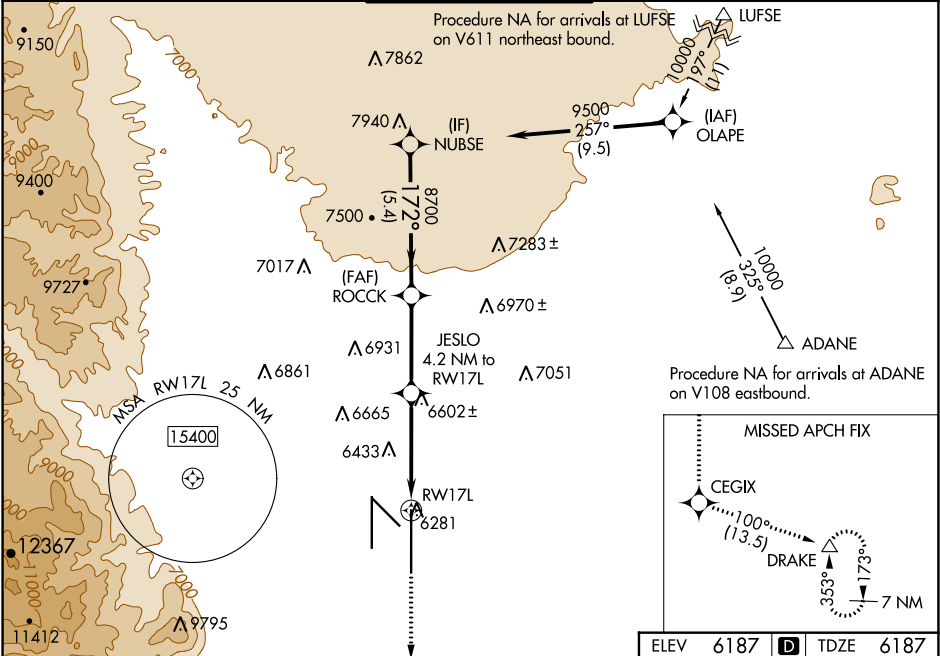
CITY OF COLORADO SPRINGS MUNI (COS)

▼ For uncompensated Baro-VNAV systems, LNAV/VNAV NA below -21°C (-5°F) or above 44°C (112°F). DME/DME RNP-0.3 NA. For inop MALSR, increase LNAV Cat C/D visibility to 2½ SM.

MALSR

MISSED APPROACH: Climb to 9000 direct CEGIX and on track 100° to DRAKE and hold.

ATIS 125.0 254.3	SPRINGS APP CON 124.0 257.875	SPRINGS TOWER 119.9 360.6	GND CON 121.7 348.6	CLNC DEL 134.45 363.125
----------------------------	---	-------------------------------------	-------------------------------	-----------------------------------



9000 ↑	CEGIX ✱	tr 100°	DRAKE △	VGSi and RNAV glidepath not coincident (VGSi Angle 3.00/TCH 53).																																		
*LNAV only																																						
<table><tr><td>CATEGORY</td><td colspan="2">A</td><td colspan="2">B</td><td>C</td><td>D</td></tr><tr><td>LPV DA</td><td colspan="2">6387/18</td><td colspan="2">200 (200-½)</td><td colspan="2"></td></tr><tr><td>LNAV/ VNAV DA</td><td colspan="2">6602/45</td><td colspan="2">415 (500-¾)</td><td colspan="2"></td></tr><tr><td>LNAV MDA</td><td>7000/24 813 (900-½)</td><td>7000/40 813 (900-¾)</td><td>7000-1⅞</td><td colspan="2">813 (900-1⅞)</td></tr><tr><td> CIRCLING</td><td>7000-1¼</td><td>813 (900-1¼)</td><td>7040-2 ½ 853 (900-2 ½)</td><td>7260-3 1073 (1100-3)</td><td></td></tr></table>						CATEGORY	A		B		C	D	LPV DA	6387/18		200 (200-½)				LNAV/ VNAV DA	6602/45		415 (500-¾)				LNAV MDA	7000/24 813 (900-½)	7000/40 813 (900-¾)	7000-1⅞	813 (900-1⅞)		CIRCLING	7000-1¼	813 (900-1¼)	7040-2 ½ 853 (900-2 ½)	7260-3 1073 (1100-3)	
CATEGORY	A		B		C	D																																
LPV DA	6387/18		200 (200-½)																																			
LNAV/ VNAV DA	6602/45		415 (500-¾)																																			
LNAV MDA	7000/24 813 (900-½)	7000/40 813 (900-¾)	7000-1⅞	813 (900-1⅞)																																		
CIRCLING	7000-1¼	813 (900-1¼)	7040-2 ½ 853 (900-2 ½)	7260-3 1073 (1100-3)																																		

