

WAAS CH <b>90234</b> <b>W21A</b>	APP CRS <b>214°</b>	Rwy Idg <b>7854</b> TDZE <b>3264</b> Apt Elev <b>3295</b>
--	------------------------	---

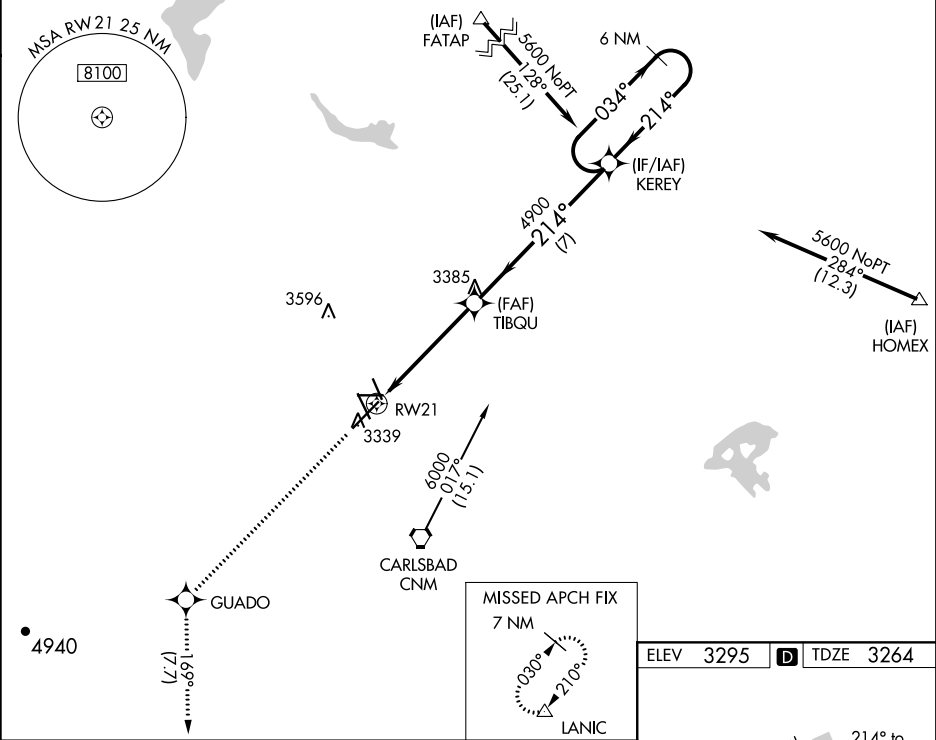
RNAV (GPS) RWY 21

CAVERN CITY AIR TERMINAL (CNM)

For uncompensated Baro-VNAV systems, LNAV/VNAV NA below -10°C (14° F) or above 50°C (123°F). DME/DME RNP-0.3 NA. Helicopter visibility reduction below ¾ SM NA.

MISSED APPROACH: Climb to 8000 direct GUADO and on track 169° to LANIC, continue climb-in-hold to 8000.

ASOS <b>118.375</b>	ALBUQUERQUE CENTER <b>135.875 292.15</b>	UNICOM <b>123.0 (CTAF)</b>
------------------------	---	-------------------------------



8000	GUADO	LANIC	TIBQU	KERER	6 NM Holding Pattern
		tr 169°			
* LNAV only. * 0.9 NM to RW21					
CATEGORY	A	B	C	D	
LPV DA		3514-¾	250 (300-¾)		
LNAV/VNAV DA		3514-¾	250 (300-¾)		
LNAV MDA		3580-1	316 (300-1)		
CIRCLING	3700-1 405 (500-1)	3780-1 485 (500-1)	3960-1¾ 665 (700-1¾)	4260-3 965 (1000-3)	

