

WAAS
CH 61034
W14A

APP CRS
144°

Rwy Idg	5837
TDZE	3270
Apt Elev	3295

RNAV (GPS) RWY 14R

CAVERN CITY AIR TERMINAL (CNM)



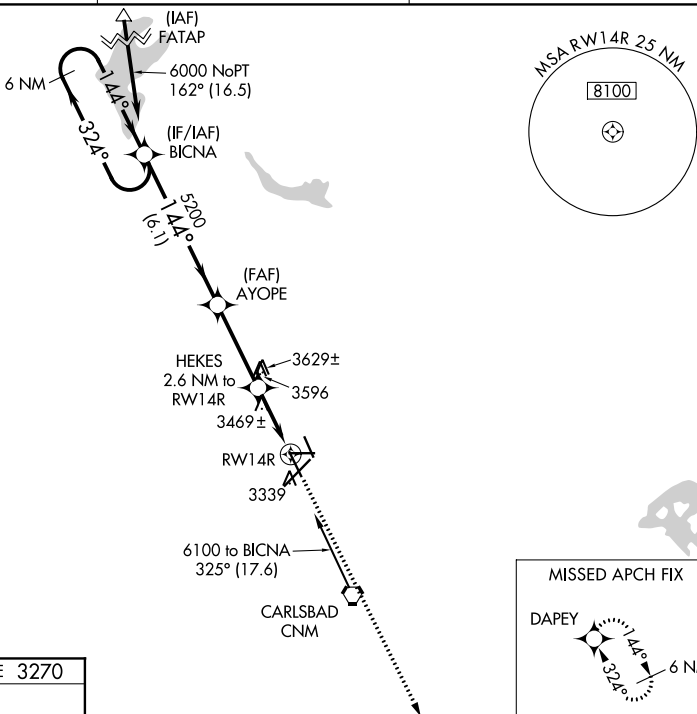
For uncompensated Baro-VNAV systems, LNAV/VNAV NA below -10°C (14°F) or above 54°C (130°F). DME/DME RNP-0.3 NA. Helicopter visibility reduction below 1 SM NA.

MISSED APPROACH: Climb to 6000
direct DAPEY and hold.

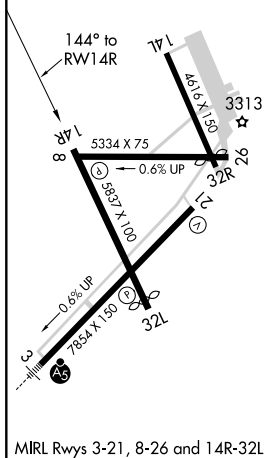
ASOS
118,375

ALBUQUERQUE CENTER
135.875 292.15

UNICOM
123.0 (CTAF) **L**



ELEV 3295	D	TDZE 3270
-----------	----------	-----------

MIRL Rwy 3-21, 8-26 and 14R-32L **L**

6 NM Holding Pattern

6000 ← 324°

144° →

BICNA

AYOPE

5200

HEKES

2.6 NM to RW14R

5200

*4120

GP 3.00° TCH 40

6.1 NM

3.3 NM

2.6 NM

RW14R

VGS and RNAV glidepath not coincident (VGS Angle 3.00/TCH 56).

6000

DAPEY

*LNNAV only.

CARLSBAD, NEW MEXICO
Amdt 1A 05MAR15

32°20'N-104°16'W

CAVERN CITY AIR TERMINAL (CNM)
RNAV (GPS) RWY 14R