

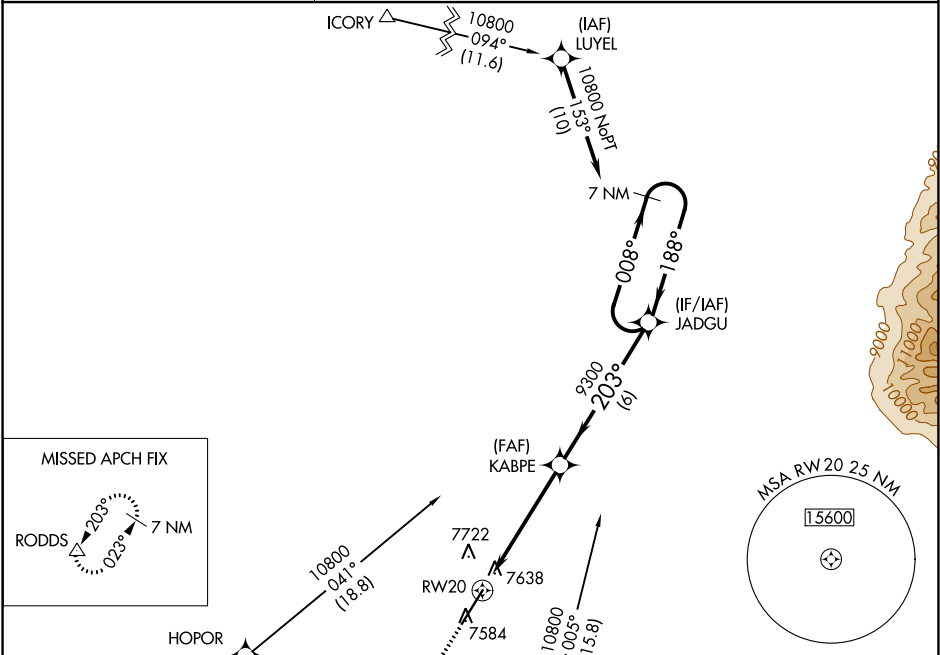
WAAS CH 93500 W20A	APP CRS 203°	Rwy Idg 8519
	TDZE 7539	
	Apt Elev 7539	

RNAV (GPS) RWY 20

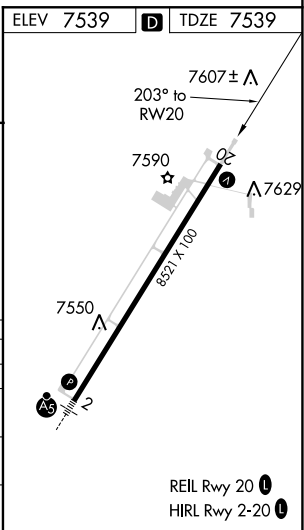
SAN LUIS VALLEY RGNL/BERGMAN FIELD (ALS)

<div><div></div><div>When local altimeter setting not received, procedure NA. For uncompensated Baro-VNAV systems, LNAV/VNAV NA below -30°C (-22°F) or above 34°C (93°F). DME/DME RNP- 0.3 NA. Visibility reduction by helicopters NA.</div></div>	MISSED APPROACH: Climb to 11500 direct RODDS and hold, continue climb-in-hold to 11500.
--	---

ASOS 135.175	DENVER CENTER 128.375 379.95	UNICOM 122.8 (CTAF) 1
------------------------	--	---------------------------------



11500		RODDS		*LNAV only		JADGU		7 NM Holding Pattern	
↑		△							
RW20		*1.3 NM to RW20		9300		203°		008° → 10800	
1.3 NM		4 NM		6 NM		9300		← 188°	
GP 3.00°								TCH 52	
CATEGORY		A		B		C		D	
LPV DA		7867-1		328 (400-1)					
LNAV/VNAV DA		8002-1½		463 (500-1½)					
LNAV MDA		8000-1 461 (500-1)		8000-1¼ 461 (500-1¼)		8000-1½ 461 (500-1½)			
CIRCLING		8040-1 501 (600-1)		8040-1½ 501 (600-1½)		8100-2 561 (600-2)			



SW-1, 31 DEC 2020 to 28 JAN 2021

SW-1, 31 DEC 2020 to 28 JAN 2021