
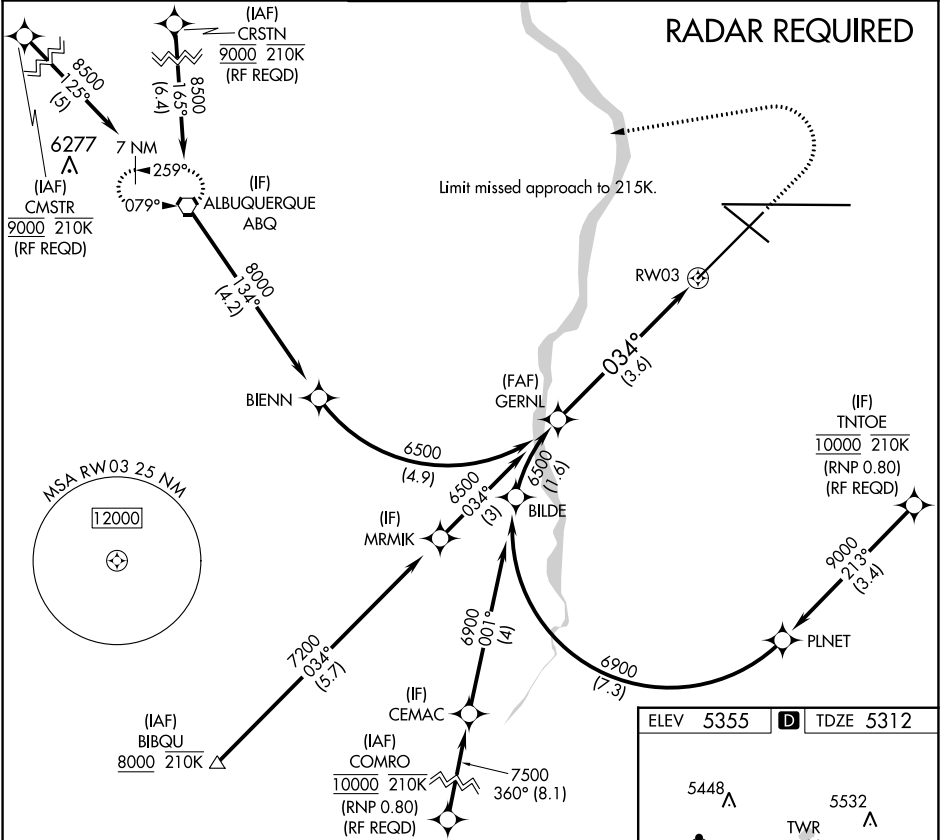


APP CRS 034°	Rwy Idg 10000 TDZE 5312 Apt Elev 5355
------------------------	--

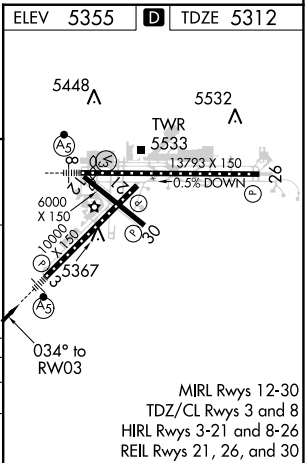
RNAV (RNP) Z RWY 3
ALBUQUERQUE INTL SUNPORT (ABQ)

ASR For uncompensated Baro-VNAV systems, procedure NA below -12°C (11°F) or above 45°C (114°F). For inop MALSR, increase RNP 0.30 all Cts visibility to RVR 4000. GPS required.	MALSR 	MISSED APPROACH: Climb to 6200 then climbing left turn to 8000 direct ABQ VORTAC and hold.
--	--	--

D-ATIS 118.0 257.7	ALBUQUERQUE APP CON 123.9 354.1	ALBUQUERQUE TOWER 120.3 351.9	GND CON 121.9 348.6	CLNC DEL 119.2 259.3	CPDLC
------------------------------	---	---	-------------------------------	--------------------------------	-------



GERNL See planview for multiple IF locations.				
6500				
GP 3.00° TCH 60				
3.6 NM				
RW03				
CATEGORY	A	B	C	D
RNP 0.30 DA	5571/24 259 (300-½)			
AUTHORIZATION REQUIRED				



SW-1, 31 DEC 2020 to 28 JAN 2021

SW-1, 31 DEC 2020 to 28 JAN 2021