

APP CRS	Rwy Idg	13793
259°	TDZE	5355
	Apt Elev	5355

RNAV (RNP) Y RWY 26
ALBUQUERQUE INTL SUNPORT (ABQ)

RNP AR APCH, RF required.

T For uncompensated Baro-VNAV systems, procedure NA
ASR below -12°C or above 48°C.

MISSED APPROACH: Climb to 8000 on track 259° to YANNU and on track 258° to ABQ VORTAC and hold.

D-ATIS
118.0 257.7

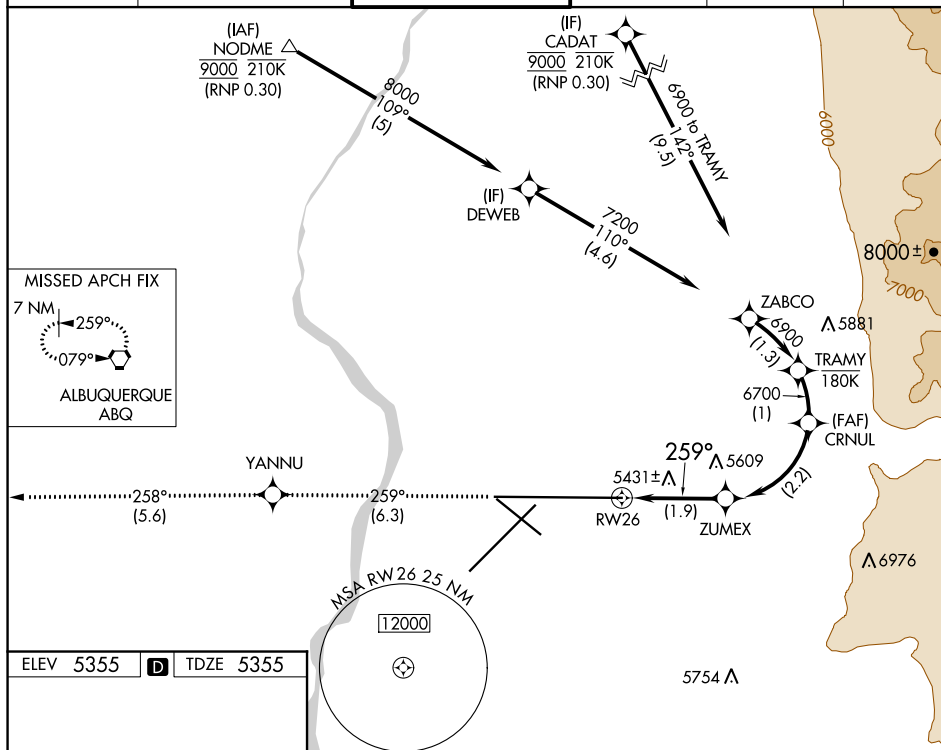
ALBUQUERQUE APP CON
123.9 354.1

ALBUQUERQUE TOWER
120.3 351.9

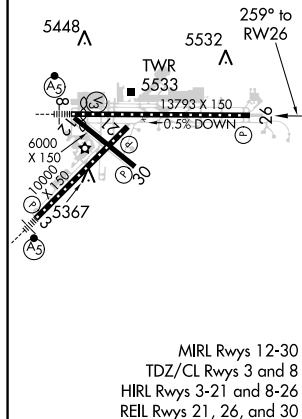
GND CON
121.9 348.6


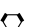
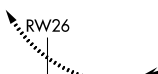

CLNC DEL
119.2 259.3

CPDLC



ELEV	5355		TDZE	5355
------	------	---	------	------



8000 ↑ tr 259°	YANNU 	ABQ 	VGS1 and RNAV glidepath not coincident (VGS1 Angle 3.00/TCH 83).	
See planview for multiple IF locations.			ZUMEX	CRNUL
			5997	6700
			1.9 NM	2.2 NM
CATEGORY	A	B	C	D
RNP 0.15 DA	5728-1¼ 373 (400-1¼)			
GP 3.00° TCH 50				

AUTHORIZATION REQUIRED