

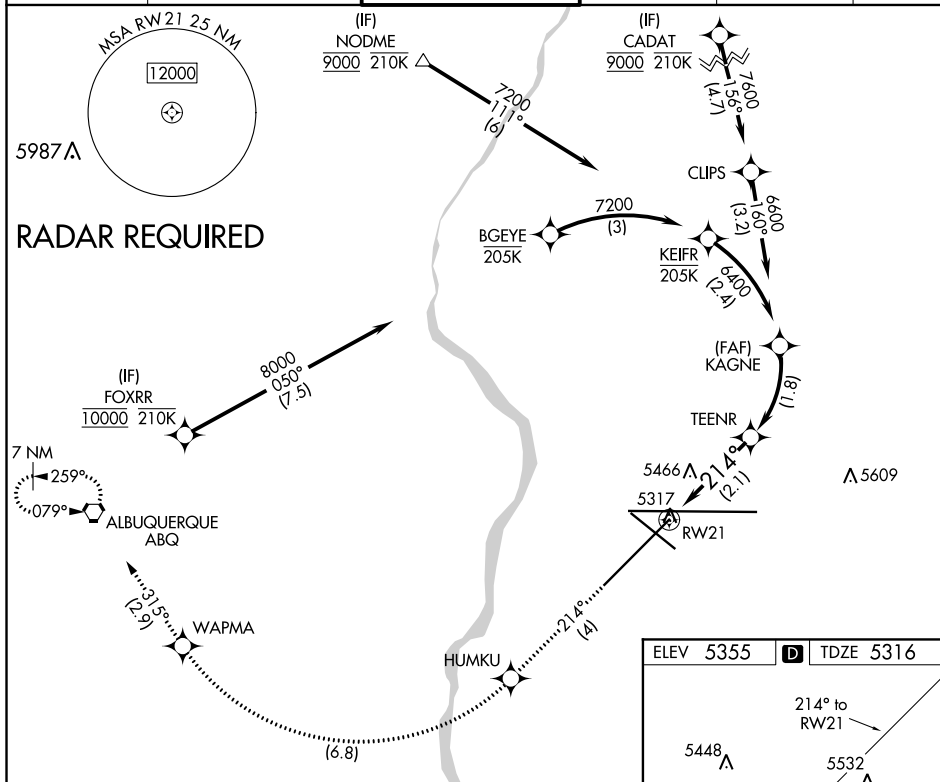
APP CRS 214°	Rwy Idg 10000 TDZE 5316 Apt Elev 5355
------------------------	--

RNAV (RNP) Y RWY 21
ALBUQUERQUE INTL SUNPORT (ABQ)

T For uncompensated Baro-VNAV systems, procedure
ASR NA below -12°C (11°F) or above 47°C (116°F).
RF Required. GPS Required.

MISSED APPROACH: Climb to 8000 on track 214° to HUMKU, right turn to WAPMA, then on track 315° to ABQ VORTAC and hold.

D-ATIS 118.0 257.7	ALBUQUERQUE APP CON 123.9 354.1	ALBUQUERQUE TOWER 120.3 351.9	GND CON 121.9 348.6	CLNC DEL 119.2 259.3	CPDLC
-----------------------	------------------------------------	----------------------------------	------------------------	-------------------------	-------



8000 ↑ tr 214°	HUMKU ✱	WAPMA ✱	tr 315° ⬡	KAGNE 6600
<p>See planview for multiple IF locations.</p> <p>TEENR 6030</p> <p>RW21</p> <p>214°</p> <p>VGSI and RNAV glidepath not coincident.</p> <p>GP 3.00° TCH 55</p> <p>2.1 NM</p> <p>1.8 NM</p>				
CATEGORY	A	B	C	D
RNP 0.30 DA	5758-1½ 442 (500-1½)			
<h1 style="text-align: center;">AUTHORIZATION REQUIRED</h1>				

