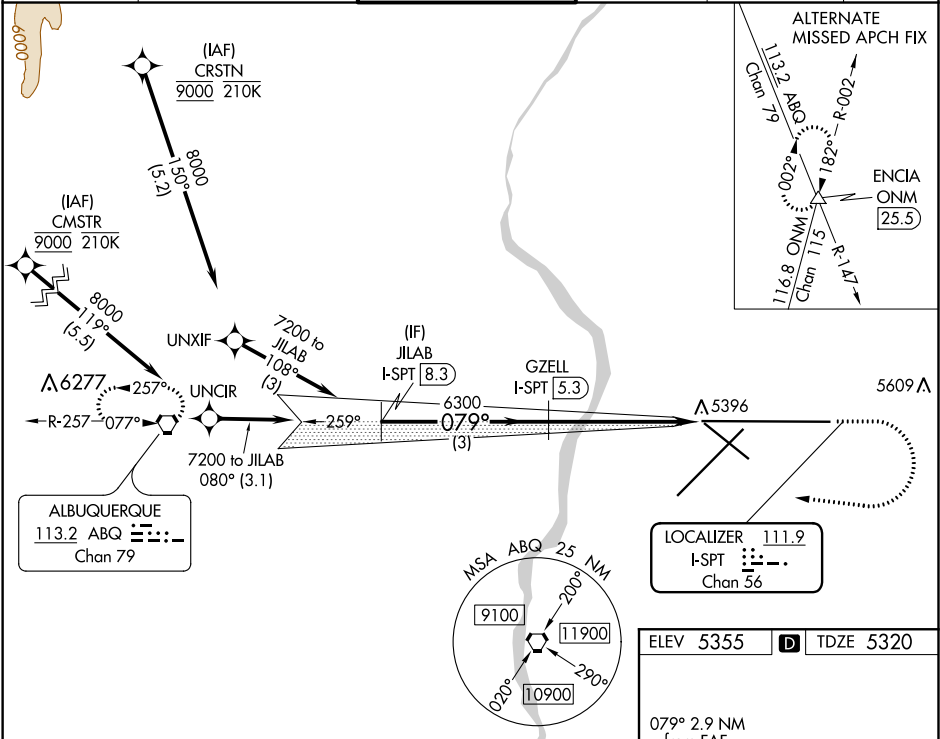


LOC/DME	I-SPT	APP CRS	Rwy Idg	12793
111.9		079°	TDZE	5320
Chan 56			Apt Elev	5355

ILS or LOC RWY 8  
ALBUQUERQUE INTL SUNPORT (ABQ)

DME required. RNAV 1 - GPS or RADAR required for procedure entry.	MALSR	MISSED APPROACH: Climb to 5800 then climbing right turn to 8000 direct ABQ VORTAC and hold.
For inop ALS, increase S-LOC 8 Cat C and D visibility to RVR 6000.	AS	

D-ATIS	ALBUQUERQUE APP CON	ALBUQUERQUE TOWER	GND CON	CLNC DEL	CPDLC
118.0 257.7	123.9 354.1	120.3 351.9	121.9 348.6	119.2 259.3	



<p>Diagram showing the final approach segment with altitudes of 7200, 6300, and 5800 feet. Distances are marked as 3 NM, 1.8 NM, and 1.1 NM. The chart also includes a table for the final approach segment.</p>				
CATEGORY	A	B	C	D
S-ILS 8	5527/18 207 (200-½)			
S-LOC 8	5720/24	400 (400-½)	5720/40	400 (400-¾)
CIRCLING	5840-1 485 (500-1)	5920-1 565 (600-1)	5940-1½ 585 (600-1½)	NA

ELEV	5355	TDZE	5320
079° 2.9 NM from FAF	5448	5532	5533
6000 X 150	5367	13793 X 150	0.5% DOWN
MIRL Rwy 12-30 TDZ/CL Rwy 3 and 8 HIRL Rwy 3-21 and 8-26 REIL Rwy 21, 26, and 30			
FAF to MAP 2.9 NM			
Knots	60	90	120 150 180
Min:Sec	2:54	1:56	1:27 1:10 0:58

SW-1, 31 DEC 2020 to 28 JAN 2021

SW-1, 31 DEC 2020 to 28 JAN 2021