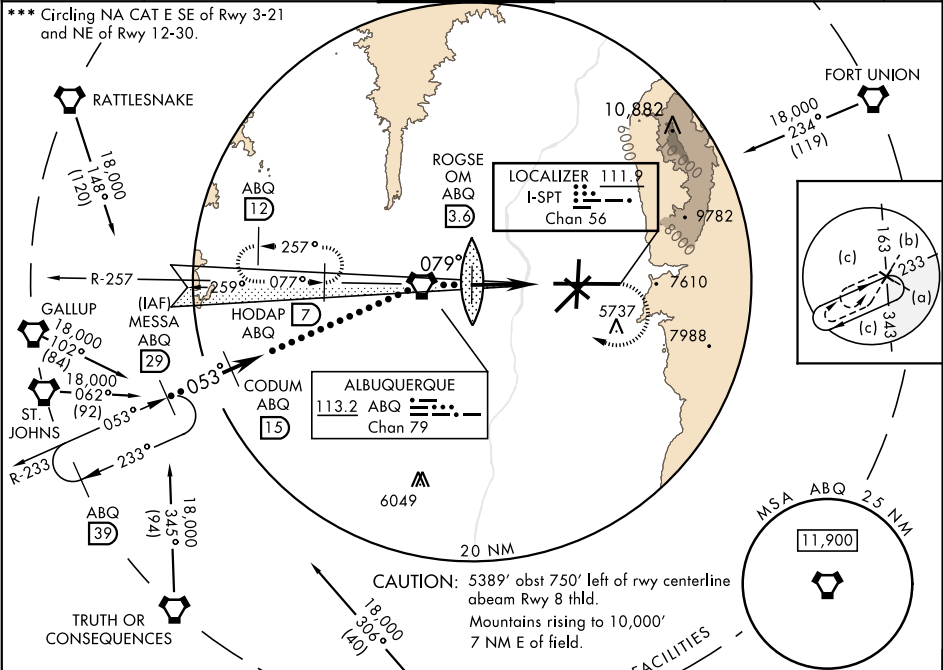


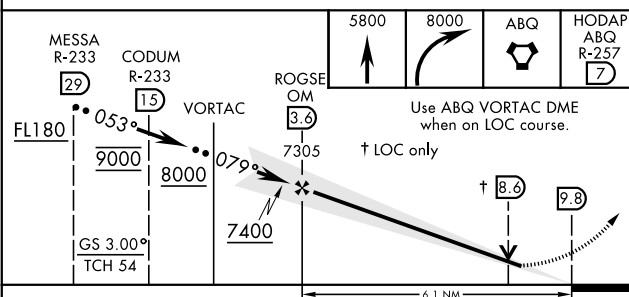
ALBUQUERQUE, NEW MEXICO 11116 LOG 0147 2 18088

LOC I-SPT <b><u>111.9</u></b>	APCH CRS <b>079°</b>	Rwy Idg <b>12,793</b> TDZE <b>5320</b> Arpt Elev <b>5355</b>	JAL-12 [USAF]	ALBUQUERQUE INTL SUNPORT (KABQ)		
<b>▼</b> * When ALS inop, increase RVR to 40 and vis to ¾ mile. ** When ALS inop, increase RVR to 60 and vis to 1½ mile.				MISSED APPROACH: Climb to 5800 then climbing right turn to 8000 direct ABQ VORTAC and ABQ R-257 to HODAP/ABQ 7 DME and hold.		
ATIS <b>118.0 257.7</b>	ALBUQUERQUE APP CON <b>123.9 354.1</b>	ALBUQUERQUE TOWER <b>120.3 351.9</b>	GND CON <b>121.9 348.6</b>	CINC DEL <b>119.2 259.3</b>	ASR	

\*\*\* Circling NA CAT E SE of Rwy 3-21  
and NE of Rwy 12-30.



**DME REQUIRED**  
EMERG SAFE ALT 100 NM 15,400



CATEGORY	C	D	E
S-ILS 8 *	5529/24	209	(300-½)
S-LOC 8 **	5740/40	420	(500-¾)
<b>C</b> CIRCLING ***	5920-1½ 565 (600-1½)	6460-3	1105 (1200-3)

ELEV 5355 TDZE 5320

079° 6.1 NM Rwy 8 Idg 12,793'  
from ROGSE OM

5532  
5402  
5458  
5354  
6000  
10,000  
13,793 x 150

0.5% UP

V3  
TWR 5533  
A5  
P  
C  
A  
S  
30  
26  
P

REIL Rwy 3-21, 26, and 30  
HIRL Rwy 3-21 and 8-26  
MIRL Rwy 12-30  
TDZL/CL Rwy 3 and 8

FAF to MAP 6.1 NM					
Knots	120	140	160	180	200
Min:Sec	3:03	2:37	2:17	2:02	1:50

ALBUQUERQUE, NEW MEXICO 35°02'N-106°37'W ALBUQUERQUE INTL SUNPORT (KABQ)  
Amdt 2A 29MAR18 **HI-ILS or LOC RWY 8**