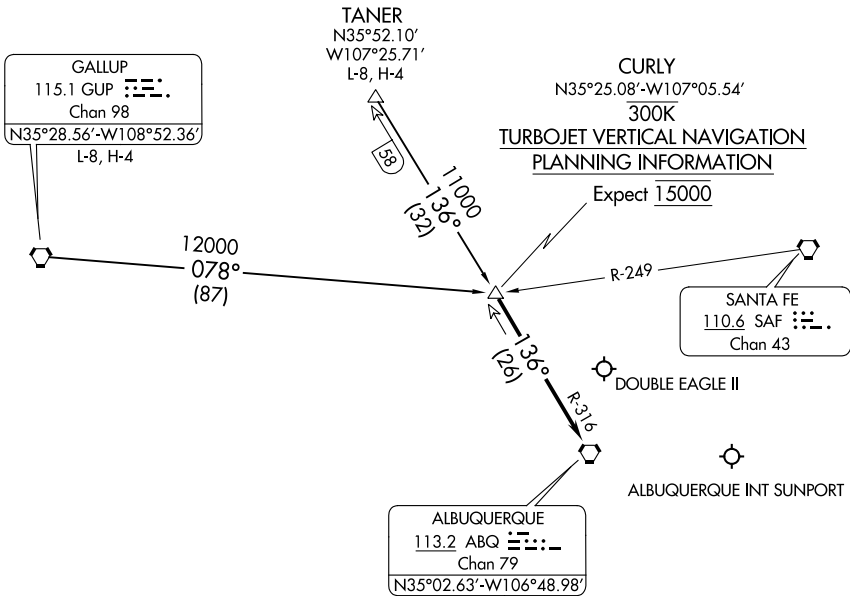


CURLY THREE ARRIVAL

AL-12 (FAA)

ALBUQUERQUE, NEW MEXICO

ALBUQUERQUE APP CON
127.4 253.5
ABQ D-ATIS
118.0 257.7



SW-1, 31 DEC 2020 to 28 JAN 2021

SW-1, 31 DEC 2020 to 28 JAN 2021

NOTE: Chart not to scale.

ARRIVAL ROUTE DESCRIPTION

GALLUP TRANSITION (GUP.CURLY3): From over GUP VORTAC on GUP R-078 to CURLY.
Thence. . .
TANER TRANSITION (TANER.CURLY3): From over TANER on ABQ R-316 to CURLY.
Thence. . .
. . . From over CURLY on ABQ R-316 to ABQ VORTAC. Expect vectors to final approach course after passing CURLY.

CURLY THREE ARRIVAL

(CURLY.CURLY3) 02MAR17

ALBUQUERQUE, NEW MEXICO