

ALAMOGORDO, NEW MEXICO

RNAV (GPS) RWY 34

APCH CRS	Rwy Idg	12,134
338°	TDZE	4058
	Arpt Elev	4093

AL-7 (USAF)

HOLLOMAN AFB (KHMN)

* Circling to Rwy 4 NA at night, when Rwy 16, 22 VGSi inop, circling to Rwy 16, 22 NA at night.	MISSED APPROACH: Climb to 4800 then climbing turn to 10,000 direct FAVAT and hold, continue climb-in-hold to 10,000.
---	--

ATIS★ 273.5	ALBUQUERQUE CENTER 132.65 257.6	APP CON 120.6 269.225	TOWER★ 119.3 255.9	GND CON 127.05 275.8	CLNC DEL 126.7 289.4
----------------	------------------------------------	--------------------------	-----------------------	-------------------------	-------------------------

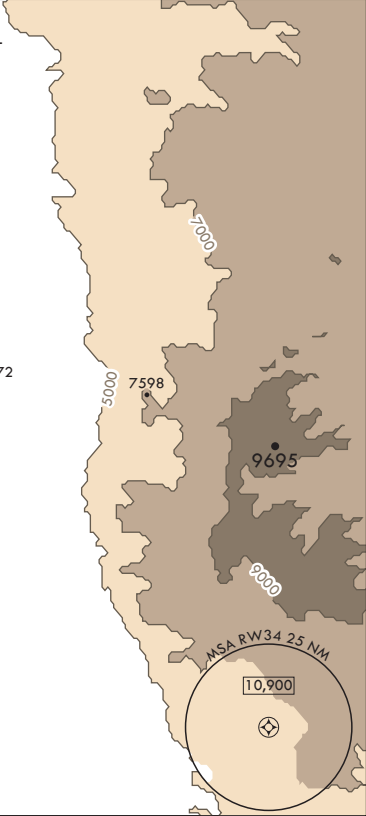
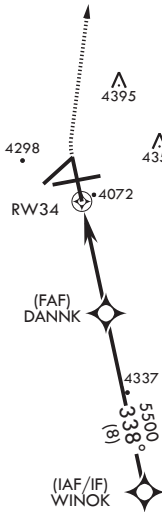
RNP APCH

DME/DME RNP-0.3 NA
GPS REQUIRED

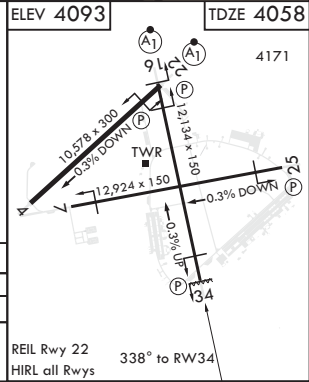
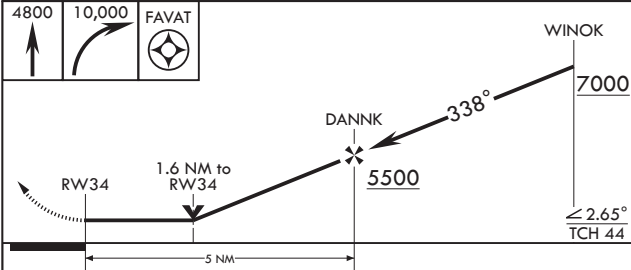
Visibility Reduction
by Helicopter NA.

CAUTION: CAT E and
portions of CAT D circling
not fully contained in
controlled airspace.

CAUTION: High terrain
to East within 15 NM.



EMERG SAFE ALT 100 NM 14,200



CATEGORY	A	B	C	D	E
LNAV MDA	4520-1	462 (500-1)	4520-1 3/8	462	(500-1 3/8)
CIRCLING*	4740-1	648 (700-1)	4740-1 3/4 648 (700-1 3/4)	4760-2 668 (700-2)	4760-2 1/4 668 (700-2 1/4)

ALAMOGORDO, NEW MEXICO

32°51'N - 106°07'W

HOLLOMAN AFB (KHMN)

Amdt 1 08NOV18

RNAV (GPS) RWY 34

SW-1, 31 DEC 2020 to 28 JAN 2021

SW-1, 31 DEC 2020 to 28 JAN 2021