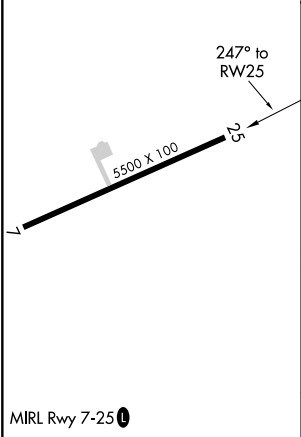
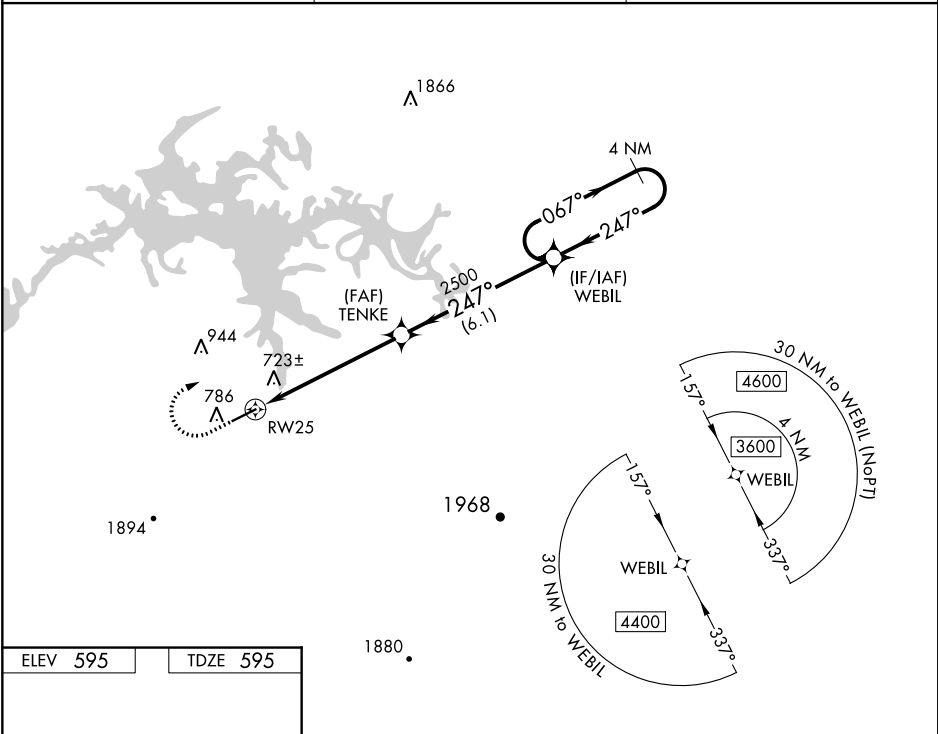


WAAS CH 72727 W25A	APP CRS 247°	Rwy ldg TDZE Apt Elev	5500 595 595
--	------------------------	-----------------------------	---

RNAV (GPS) RWY 25
CENTRE-PIEDMONT CHEROKEE COUNTY RGNL (PYP)

▼ ▲ NA	Baro-VNAV NA. DME/DME RNP-0.3 NA. Use Gadsden altimeter setting, when not received, use Anniston altimeter setting and increase all DA/MDA 20 feet.	MISSED APPROACH: Climb to 1500 then climbing right turn to 3600 direct WEBIL and hold.
-------------------------	---	---

GAD AWOS-3PT 127.825	ATLANTA CENTER 124.5 270.325	CTAF 122.9
--------------------------------	--	----------------------



1500	3600	WEBIL	<div>4 NM Holding Pattern</div>			
<div>↑</div>	<div>↗</div>	<div>✦</div>				
<div><div>TENKE</div><div>2500</div><div>247°</div><div>2500</div><div>067° → 3600</div><div>← 247°</div><div>GP 3.00°</div><div>TCH 40</div></div>						
<div><div>RW25</div><div>5.9 NM</div><div>6.1 NM</div></div>						
CATEGORY	A		B	C	D	
LPV DA			856-7 ⁸ / ₈ 261 (300-7 ⁸ / ₈)			
LNAV/VNAV DA			1064-1 ⁵ / ₈ 469 (500-1 ⁵ / ₈)			
LNAV MDA	1180-1 585 (600-1)		1180-1 ³ / ₄ 585 (600-1 ³ / ₄)			
CIRCLING	1180-1 585 (600-1)		1180-1 ³ / ₄ 585 (600-1 ³ / ₄)		1180-2 585 (600-2)	

SE-4, 31 DEC 2020 to 28 JAN 2021

SE-4, 31 DEC 2020 to 28 JAN 2021